

# 2005-2015 TOYOTA, TACOMA, DOUBLE CAB CAB LENGTH

## RUNNING BOARD INSTALLATION INSTRUCTIONS



# SAFETY

**Know safety, no injury. Know injury, no safety. ~Author Unknown**

If there are any questions, call 1-855-HHTOUGH

- **READ ALL SAFETY INSTRUCTIONS BEFORE INSTALLATION**
  - FOLLOW ALL INSTRUCTIONS FOR PROPER ASSEMBLY
  - WEAR APPROPRIATE EYE PROTECTION
  - EXERCISE CARE WHEN LIFTING COMPONENTS
  - USE APPROPRIATE TORQUE FOR BOLTS
  - BLUE THREAD LOCKING COMPOUND IS RECOMMENDED ON ALL BOLTS
  - SUGGESTED TORQUE VALUES FOR STEEL GRADE SAE 5 BOLTS

BOLT DIAMETER (INCH)	TREADS PER INCH	TORQUE (POUND-FEET)
1/4	20	7
5/16	18	14
3/8	16	25
7/16	14	40
1/2	13	60
9/16	12	88
5/8	11	120
3/4	10	200
7/8	9	302
1	8	466

**I. PARTS LIST**

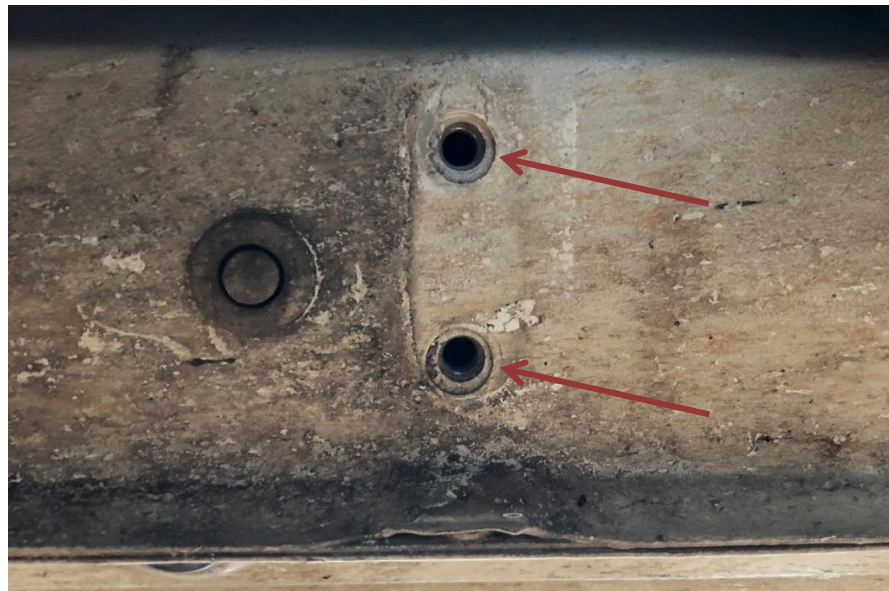
<u>QUANTITY</u>	<u>PART NUMBER</u>	<u>DESCRIPTION</u>
1	60P-56-0293	RIGHT RUNNING BOARD
1	60P-56-0292	LEFT RUNNING BOARD
1	60K-56-0027	HARDWARE KIT #27

**II. TOOL LIST**

1. A good friend
2. Basic tool kit
3. 13mm socket or wrench

**III. VEHICLE PREPARATION**

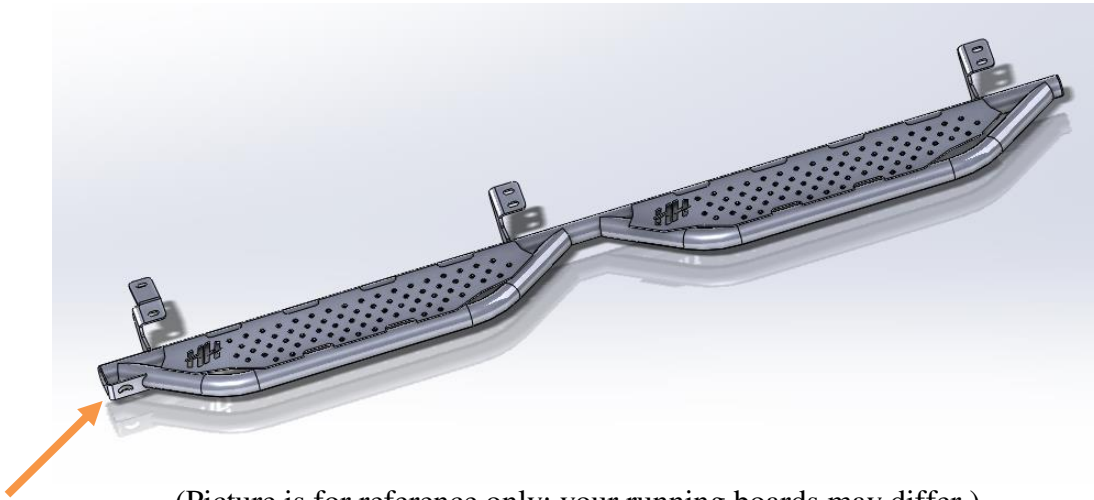
1. Remove plastic plugs from threaded inserts in body under doors. There are three sets of two.



2. Using M8 bolts from hardware kit #27, Thread bolts in and out of inserts to verify threads are clean of debris.

## IV. RUNNING BOARD INSTALLATION

1. Identify the left running board. It will have a bottle opener (arrow) on the left side.



(Picture is for reference only; your running boards may differ.)

2. Have a good friend help you hold the running board up to the mounts.
3. Using hardware from kit #27, attach running boards to threaded inserts in body. Use one bolt, one flat washer, and one lock washer for each threaded insert.
4. Using 13mm wrench or socket, tighten all bolts. Installation is now complete. Follow the same procedure for the right side of the vehicle.



Congratulations! Your installation is now complete.  
Thank you for your purchase.