



KENWORTH T370

XD SERIES FRONT BUMPER

INSTALLATION INSTRUCTIONS



SAFETY

Know safety, no injury. Know injury, no safety. ~Author Unknown

If there are any questions, call 1-855-HHTOUGH

READ ALL SAFETY INSTRUCTIONS BEFORE INSTALLATION

- FOLLOW ALL INSTRUCTIONS FOR PROPER ASSEMBLY
- WEAR APPROPRIATE EYE PROTECTION
- EXERCISE CARE WHEN LIFTING COMPONENTS
- USE APPROPRIATE TORQUE FOR BOLTS
- RE-TORQUE HARDWARE AT EVERY OIL CHANGE.

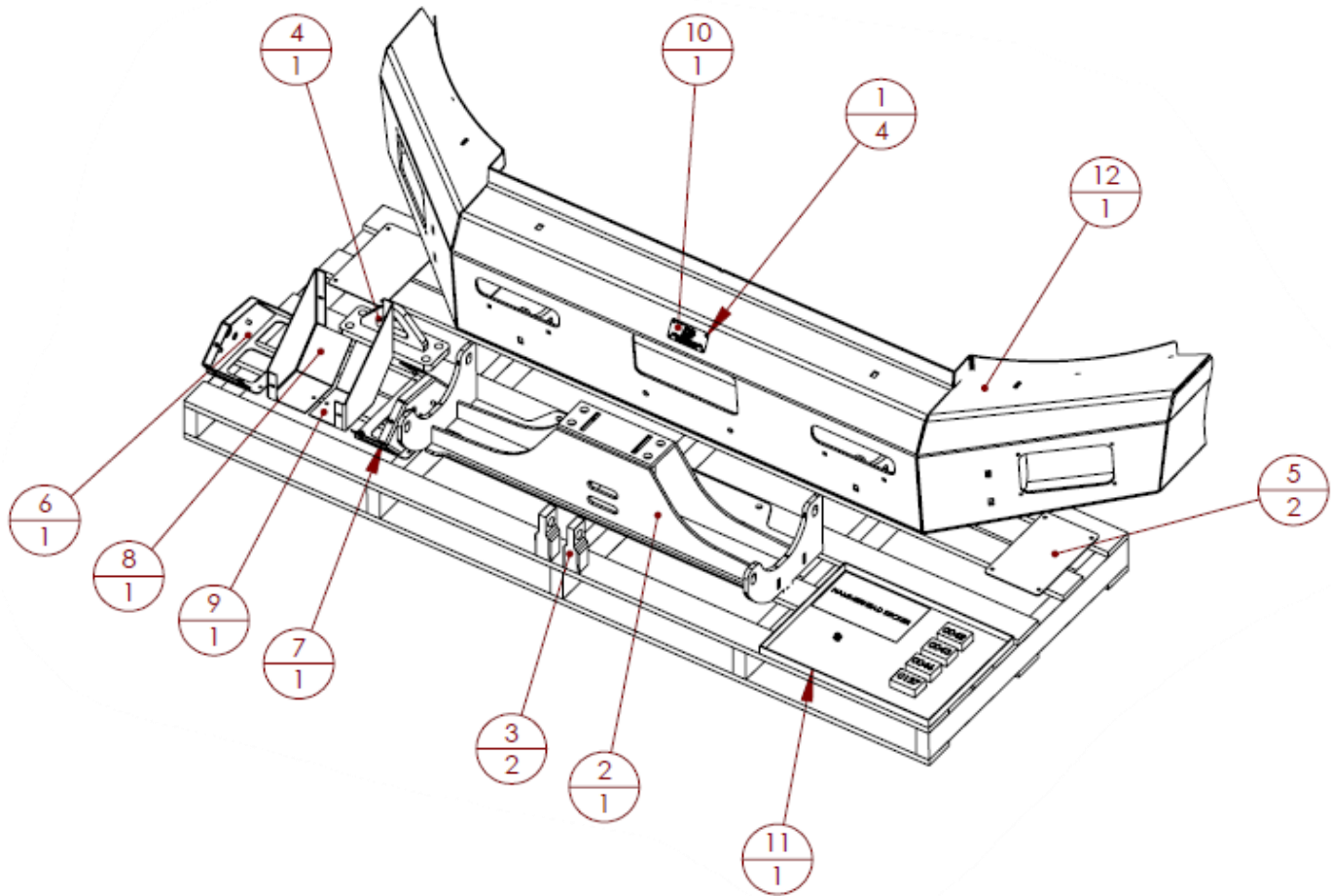
Suggested Torque Values For Steel Grade 5 Standard Bolts		
BOLT DIAMETER (INCH)	THREADS PER INCH	TORQUE (POUND - FEET)
1/4	20	7
5/16	18	14
3/8	16	25
7/16	14	40
1/2	13	60
9/16	12	88
5/8	11	120
3/4	10	200
7/8	9	302
1	8	466

Suggested Torque Values For Steel Grade 8.8 Metric Bolts		
BOLT DIAMETER (mm)	THREAD PITCH (mm)	TORQUE (POUND-FEET)
6	1.0	7
8	1.25	16
10	1.5	32
12	1.75	55
14	2.0	88
16	2.0	140
18	2.5	195
20	2.5	275
22	2.5	375
24	3.0	475



I. PARTS LIST

Note: Brush guard configuration may differ.



ITEM NO.	QTY.	PART NUMBER	DESCRIPTION
1	4	318-12-0005	0.188" X 0.125" AL POP RIVET
2	1	601-56-2604	CENTER TOW WELDMENT
3	2	601-56-2620	KENWORTH TOW ATTACHMENT
4	1	601-56-2672	KENWORTH CENTER TOW WELDMENT
5	2	601-56-2824	PRIME LED LIGHT MOUNT COVER
6	1	601-56-2876	40° LIGHT BOX RH
7	1	601-56-2877	40° LIGHT BOX LH
8	1	601-56-2878	LIGHT BOX TOP 40° RH
9	1	601-56-2879	LIGHT BOX TOP 40° LH
10	1	601-56-9992	BLACK HAMMERHEAD LABEL W/ HOLES
11	1	60H-56-0245	INSTALL KIT #245
12	1	60P-56-0321	600-56-0321 POLISHED



REMOVE CONTENTS FROM BOX AND VERIFY ALL PARTS ARE PRESENT.

If there are any questions, call 1-855 HHTOUGH or email HHORDERS@hammerheadarmor.com

II. TOOL LIST

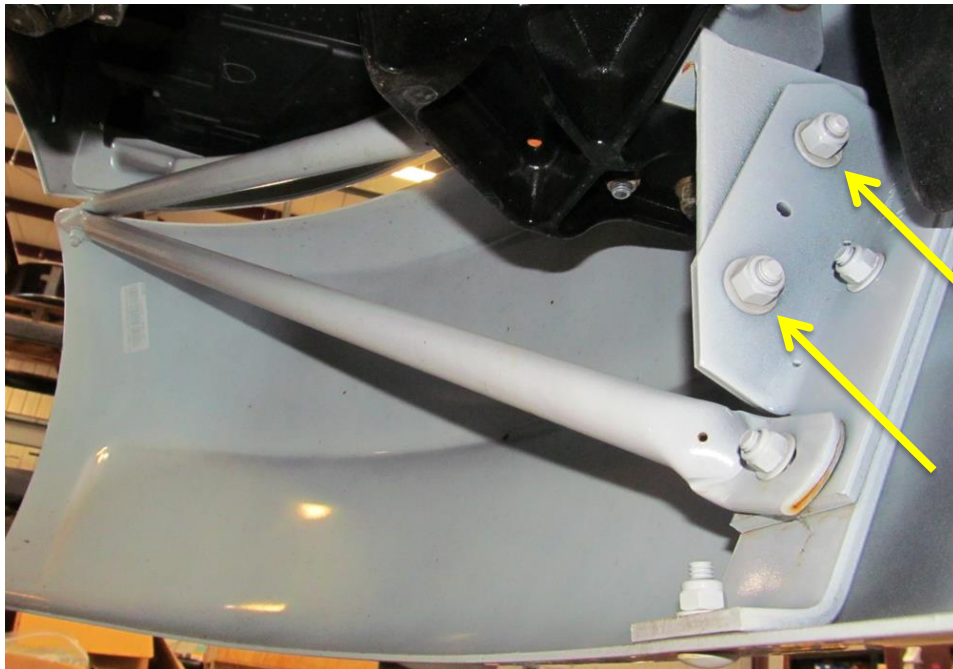
- ✓ A good friend
- ✓ Basic tool set
- ✓ Blue masking tape
- ✓ Trim tool
- ✓ Torx 30 bit
- ✓ 19mm socket
- ✓ 3/4" socket
- ✓ Ratchet extension

III. VEHICLE PREPARATION

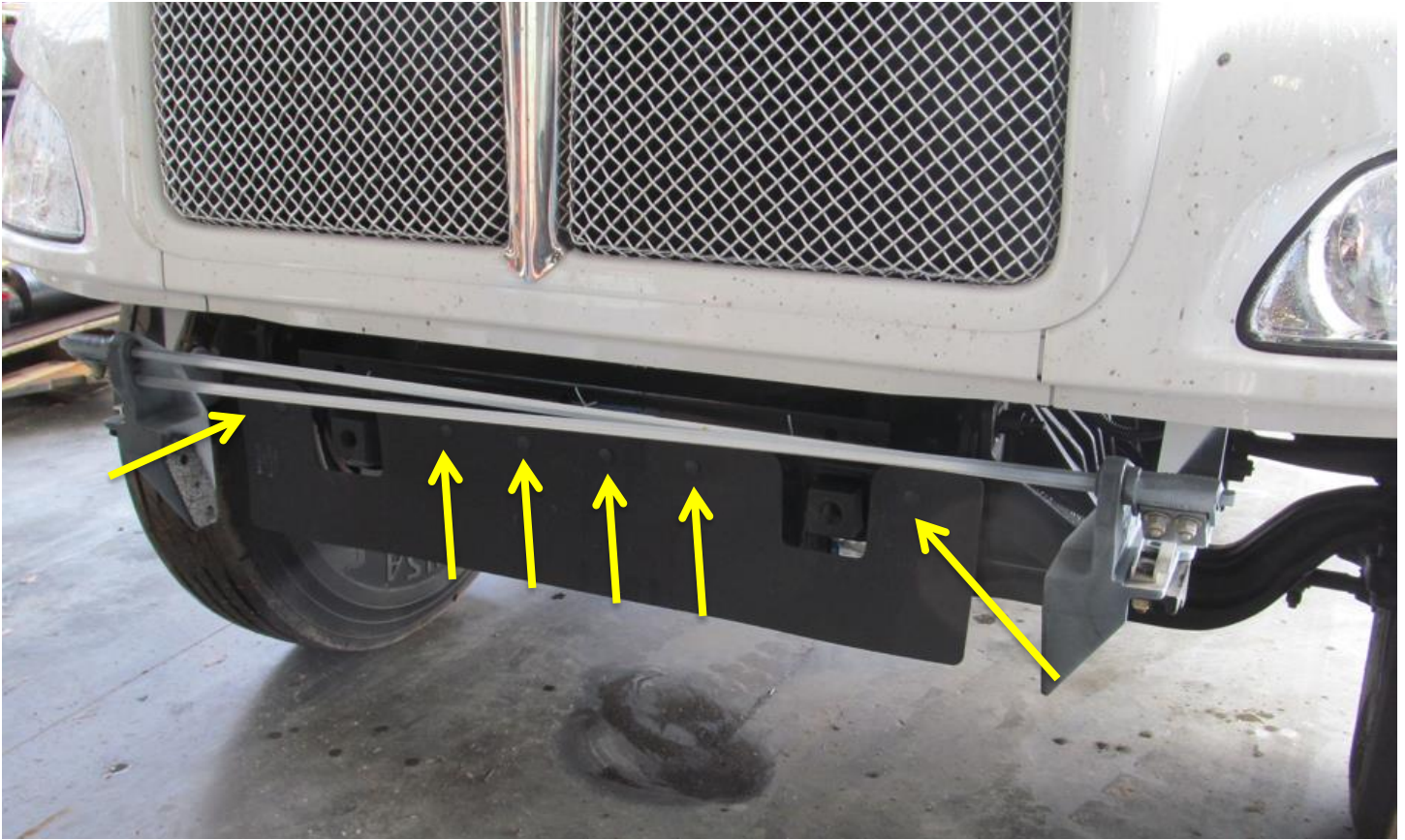
1. Park vehicle on level surface.
2. Engage parking brake and disconnect battery.
3. Using blue masking tape, mask along the profile of your truck above the bumper. This will help protect your truck from any accidental scratches.

IV. REMOVAL OF OE BUMPER

1. Using a 19mm socket, remove OE bumper mount hardware as pictured below. Repeat for both sides. Remove bumper and hardware and set aside. These components will not be reused.

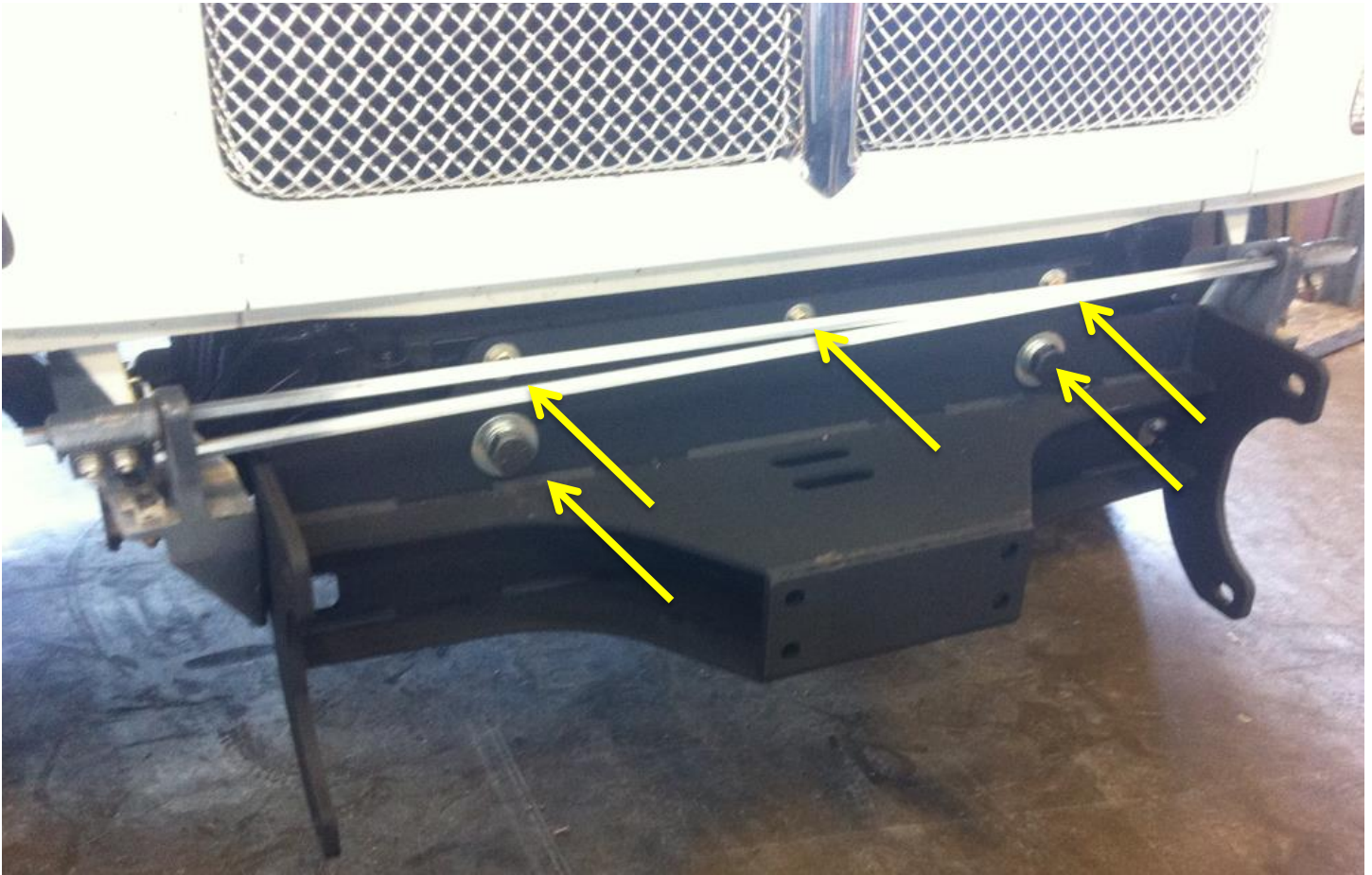


2. Using a trim tool, remove (6) push pins from frame of vehicle. Set components aside as they will not be reused.



V. INSTALLATION OF HAMMERHEAD BUMPER

1. Lay bumper face down on a carpeted surface or a piece of cardboard. Install all lights in bumper with brackets and hardware provided by light manufacturer.
2. Using hardware provided in install kit #245, install center tow weldment to frame of vehicle as pictured below.



3. Using a hoist or a few friends, attach bumper to frame mounts using hardware kit # and weld nut tabs as shown below. Start all bolts before aligning bumper. Align bumper a minimum of $\frac{1}{4}$ " below plastic fascia. When truck flexes off-road, this distance allows your bumper and body to have clearance. Fully tighten bolts with $\frac{3}{4}$ " socket. Fully tighten frame mount bolts as well at this time.



**Congratulations! Your product installation is now complete.
Thank you for your purchase!**