

2015-20XX, PETERBILT, 367

FRONT BUMPER AND TOW HITCH INSTALLATION INSTRUCTIONS



SAFETY

Know safety, no injury. Know injury, no safety. ~Author Unknown

If there are any questions, call 1-855-HHTOUGH

- **READ ALL SAFETY INSTRUCTIONS BEFORE INSTALLATION**

- FOLLOW ALL INSTRUCTIONS FOR PROPER ASSEMBLY
- WEAR APPROPRIATE EYE PROTECTION
- EXERCISE CARE WHEN LIFTING COMPONENTS
- USE APPROPRIATE TORQUE FOR BOLTS

SUGGESTED TORQUE VALUES FOR STEEL GRADE SAE 8 BOLTS

BOLT DIAMETER (INCH)	TREADS PER INCH	TORQUE (POUND-FEET)
1/4	20	14
5/16	18	29
3/8	16	47
7/16	14	78
1/2	13	119
9/16	12	169
5/8	11	230
3/4	10	380
7/8	9	600
1	8	700



2015-20XX PETERBILT 367 FRONT BUMPER

I. PARTS LIST

<u>QUANTITY</u>	<u>PART NUMBER</u>	<u>DESCRIPTION</u>	<u>CHECKOFF</u>
1	60P-56-0355	Bumper Weldment	
1	601-56-2782	Center Tow Weldment	
1	601-56-2796	Right Light Box	
1	601-56-2797	Left Light Box	
1	601-56-2800	Right Light Box Top	
1	601-56-2801	Left Light Box Top	
2	601-56-2904	Tow Hitch Spacer	
1	60K-56-0043	Hardware Kit #43	
1	60K-56-0046	Hardware Kit #46	
1	60K-56-0047	Hardware Kit #47	
1	60K-56-0049	Hardware Kit #49	
1	60K-56-0050	Hardware Kit #50	

II. TOOL LIST

1. 1-1/8" wrench
2. 1-1/8" socket
3. 15/16" wrench
4. 15/16" socket
5. 24mm wrench
6. 24mm socket
7. 7/16" wrench
8. Blue Thread Locker

III. REMOVAL OF OEM BUMPER

1. Remove all components from box and compare to parts list above
2. Using the 24mm wrench and socket, remove the OEM front bumper and OEM tow hitch. Discard hardware and bumper. It will not be reused. Save OEM tow hitch, it will be reused.
3. Remove lower bumper flanges and discard. (Shown below)

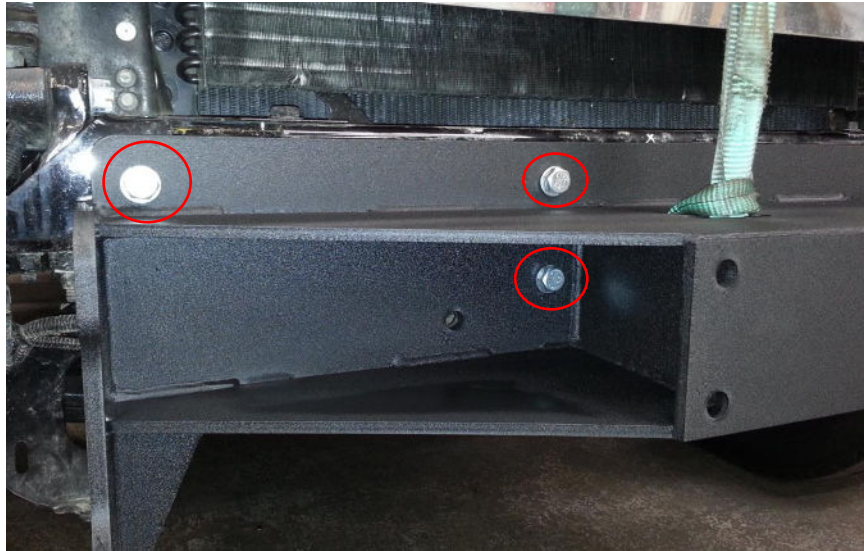




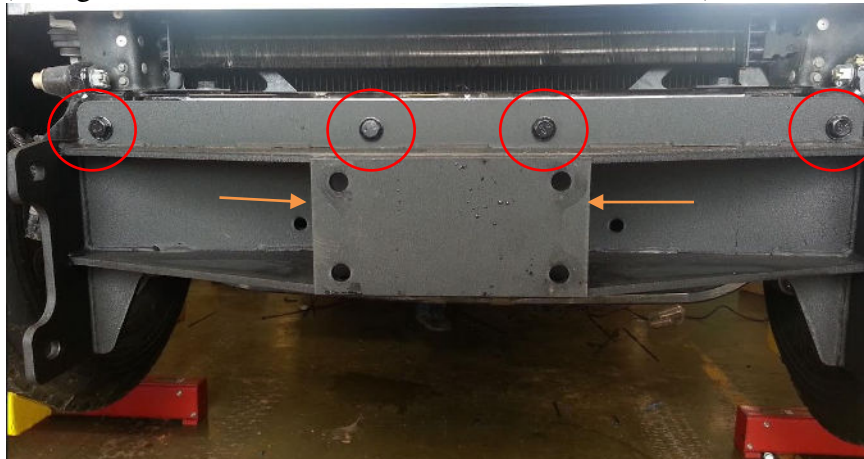
2015-20XX PETERBILT 367 FRONT BUMPER

IV. INSTALLATION OF HAMMERHEAD BUMPER

1. Install Tow Weldment using Hardware Kit #50, 23mm socket, and Blue Thread Locker (Use only the holes highlighted in the pictures below, 6 total)



(Orange arrows show location of 2 hidden holes below)

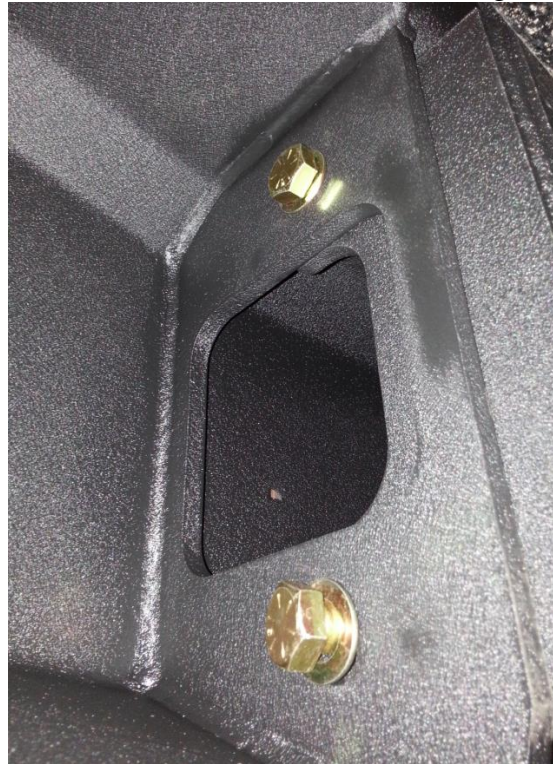


2. Torque bolts to spec provided in the table on page 1

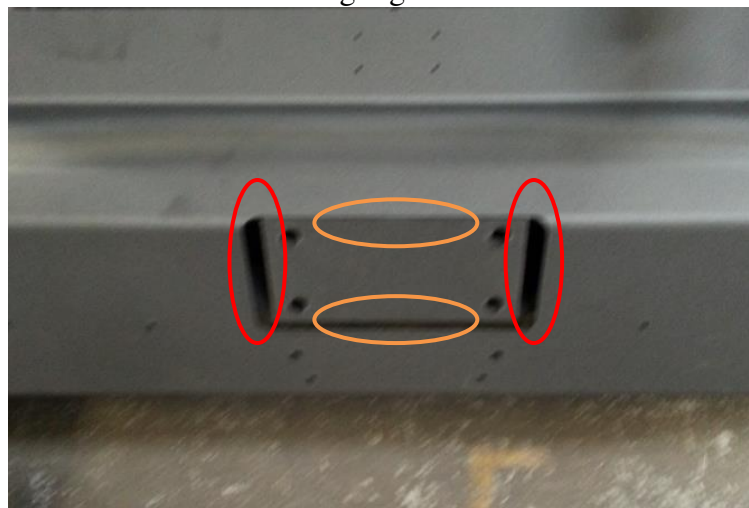


2015-20XX PETERBILT 367 FRONT BUMPER

3. Mount Bumper Weldment to Tow Weldment using Hardware Kit #47, 1-1/8" wrench, and 1-1/8" socket. Hand tighten only at this time.



4. Align Bumper by measuring the vertical and horizontal gaps around center tow weldment as highlighted below.



5. Once bumper is aligned, tighten all bolts to specified values.



2015-20XX PETERBILT 367 FRONT BUMPER

6. Install the OEM Tow Hitch using Hardware Kit # 49, Tow Hitch Spacers, 15/16 wrench, and 15/16" socket. Tow Hitch Spacers 601-56-2904 are placed between the tow weldment and the OEM tow hitch.



7. Tighten all tow hitch bolts to specified values.
8. If your bumper is equipped with lights install them at this time using the instructions provided with your light boxes. (Hardware Kit #46 is used to attach light box covers. It is not used if your bumper is not equipped with lights)
9. If your bumper is not equipped with lights, install your light mount covers using Hardware Kit #43 and a 7/16" wrench. (example below)



Align bumper a minimum of 1/4" below the lowest point of the hood when open. When truck flexes off-road, this distance allows your bumper and body to have clearance.



2015-20XX PETERBILT 367 FRONT BUMPER



**You have now installed your front bumper for your
Peterbilt 367**