



# 2021-20XX DODGE DURANGO GUARDIAN SERIES PUSH BUMPER *INSTALLATION INSTRUCTIONS*



# SAFETY

**Know safety, no injury. Know injury, no safety. ~Author Unknown**

If there are any questions, call 1-855-HHTOUGH

**READ ALL SAFETY INSTRUCTIONS BEFORE INSTALLATION**

- FOLLOW ALL INSTRUCTIONS FOR PROPER ASSEMBLY
- WEAR APPROPRIATE EYE PROTECTION
- EXERCISE CARE WHEN LIFTING COMPONENTS
- USE APPROPRIATE TORQUE FOR BOLTS
- RE-TORQUE HARDWARE AT EVERY OIL CHANGE.

<b>Suggested Torque Values For Steel Grade 5 Standard Bolts</b>		
BOLT DIAMETER (INCH)	THREADS PER INCH	TORQUE (POUND - FEET)
1/4	20	7
5/16	18	14
3/8	16	25
7/16	14	40
1/2	13	60
9/16	12	88
5/8	11	120
3/4	10	200
7/8	9	302
1	8	466

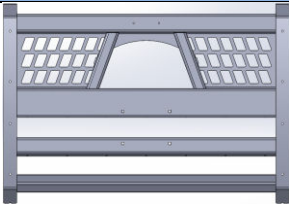
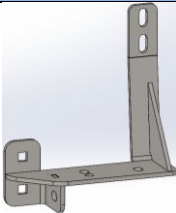
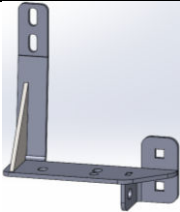
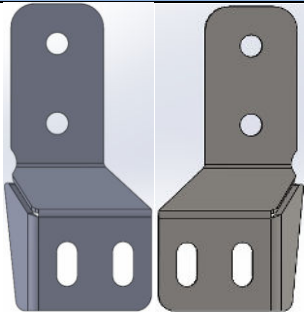
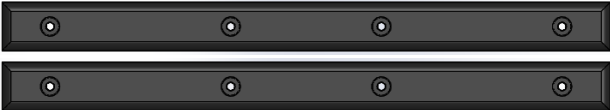
<b>Suggested Torque Values For Steel Grade 8.8 Metric Bolts</b>		
BOLT DIAMETER (mm)	THREAD PITCH (mm)	TORQUE (POUND-FEET)
6	1.0	7
8	1.25	16
10	1.5	32
12	1.75	55
14	2.0	88
16	2.0	140
18	2.5	195
20	2.5	275
22	2.5	375
24	3.0	475





**I. PARTS LIST**

*Note: Brush guard configuration may differ.*

ITEM 1	PURSUIT SERIES GG	QTY. 1	ITEM 2	RIGHT FRAME MOUNT WELDMENT	QTY. 1	
						
ITEM 3	LEFT FRAME MOUNT WELDMENT	QTY. 1	ITEM 4	HARDWARE KITS		
			<ul style="list-style-type: none"> <li>✓ <b>HARDWARE KIT #208</b> (60K-56-0208)</li> <li>✓ <b>HARDWARE KIT #219</b> (60K-56-0219)</li> </ul>			
ITEM 5	L AND R GG FRAME MOUNT		QTY. 2	ITEM 6	UHMW TRIM	QTY. 2
						

**REMOVE CONTENTS FROM BOX AND VERIFY ALL PARTS ARE PRESENT.**

**If there are any questions, call 1-855 HHTOUGH or email HHORDERS@hammerheadarmor.com**

**II. TOOL LIST**

- ✓ A good friend
- ✓ Basic tool set
- ✓ Blue masking tape
- ✓ Torx 10 bit
- ✓ 10mm socket
- ✓ 13mm socket
- ✓ 15mm socket
- ✓ 3/4" socket
- ✓ Ratchet
- ✓ Ratchet extension

### III. VEHICLE PREPARATION

1. Park vehicle on level surface.
2. Engage parking brake and disconnect battery.
3. Using blue masking tape, mask along the profile of your truck above the bumper. This will help protect your truck from any accidental scratches.

### IV. REMOVAL OF BUMPER

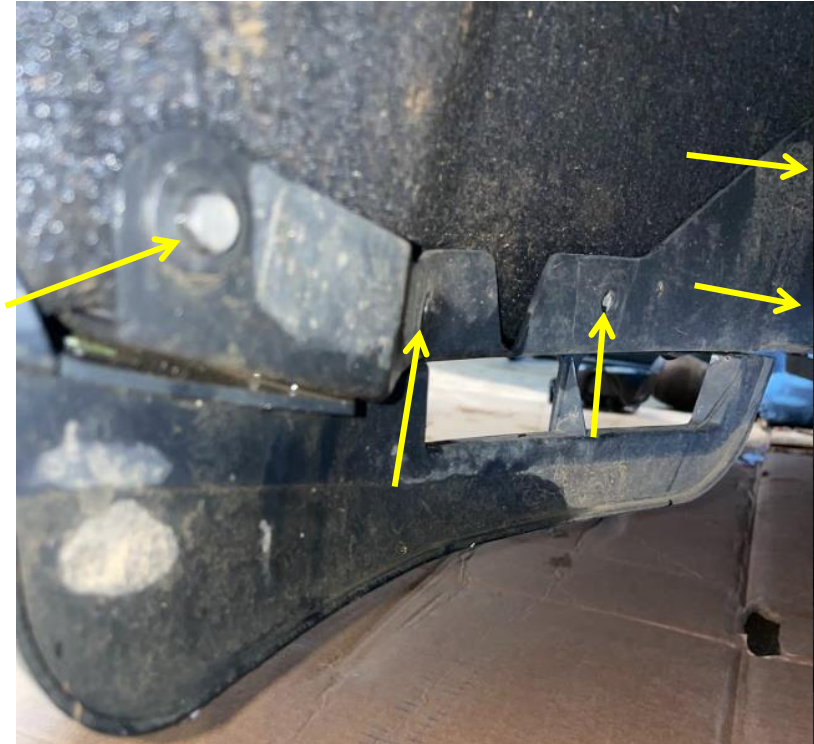
1. Open the hood and find the 4 plastic rivets found on top of the grille shroud. Using a trim removal tool, remove the rivets by prying the head of the rivet upwards; removing the head and body of the rivet. Keep plastic rivets to be reused later.



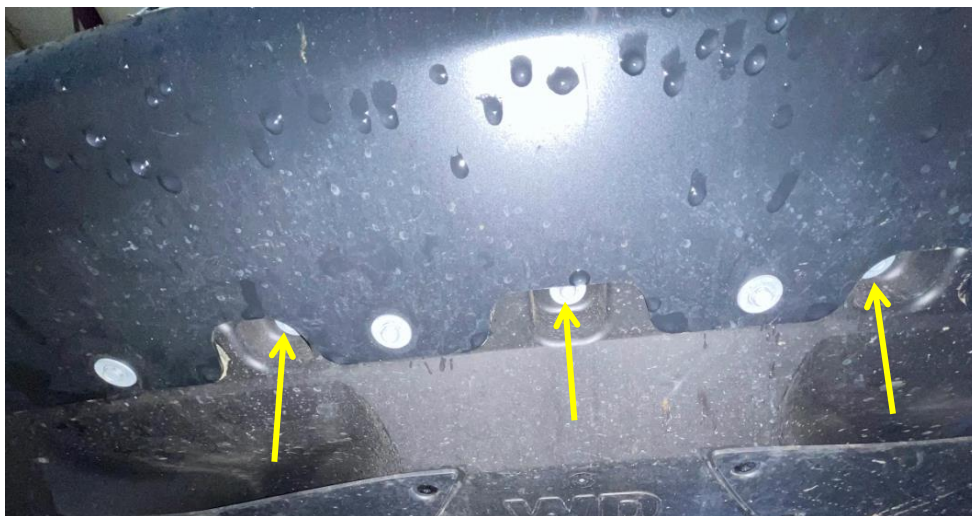
2. On each side of the vehicle locate the 4 plastic rivets (2 per side). Using a trim removal tool pry the head and body of the rivets out. Set plastic rivets aside to be reused.



- Using a 7mm socket, locate the 10 hex head screws (5 per side) at the bottom of the fender liner. Remove the screws detaching the lower bumper from the fender liner. Start by gently pulling fender liner towards the tire. Set screws aside to be reused.



- Looking at the engine splash cover on the bottom of the bumper, use a 10 mm socket to remove the three hex head bolts located in the indentions. Set hardware aside to be reused.



5. Using a 13 mm socket remove the 4 bolts holding the skid plate. Set hardware aside to be reused.

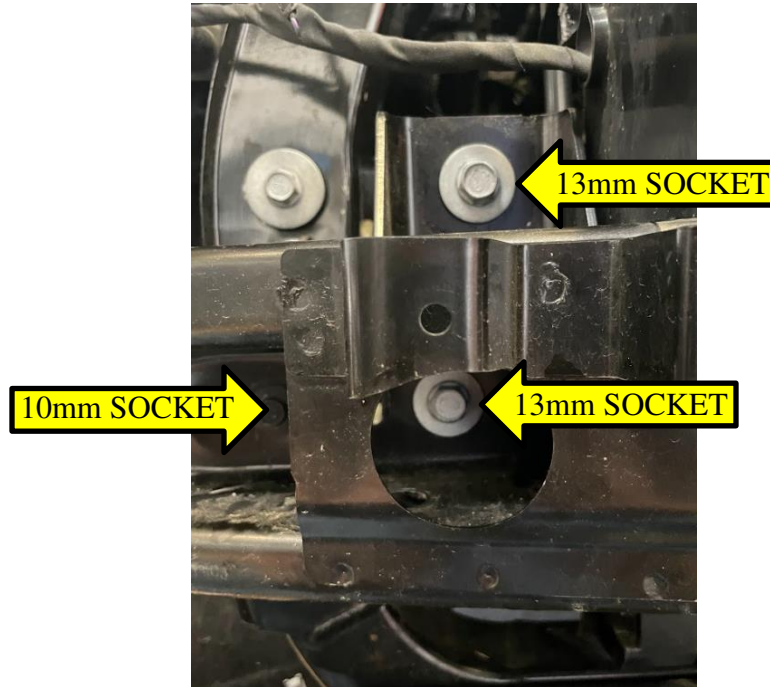


6. Gently remove the bumper from each side of the vehicle where the bumper and fender meet. To do so, pry the fender flair outwards detaching it from the bumper cover. Release the clips behind the bumper by gently pulling outwards. As doing so, work your way to the center of the bumper. Repeat for other side.



7. At this time disconnect the fog light wiring harness located on the passenger side of the bumper (if applicable).

8. Using a 13 mm socket, remove 4 hex head bolts (2 per side) from the crash bar support as shown below. Using a 10 mm socket, remove the two black hex head bolts (1 per side) located in the crash bar support as shown below. Set hardware aside to be reused.

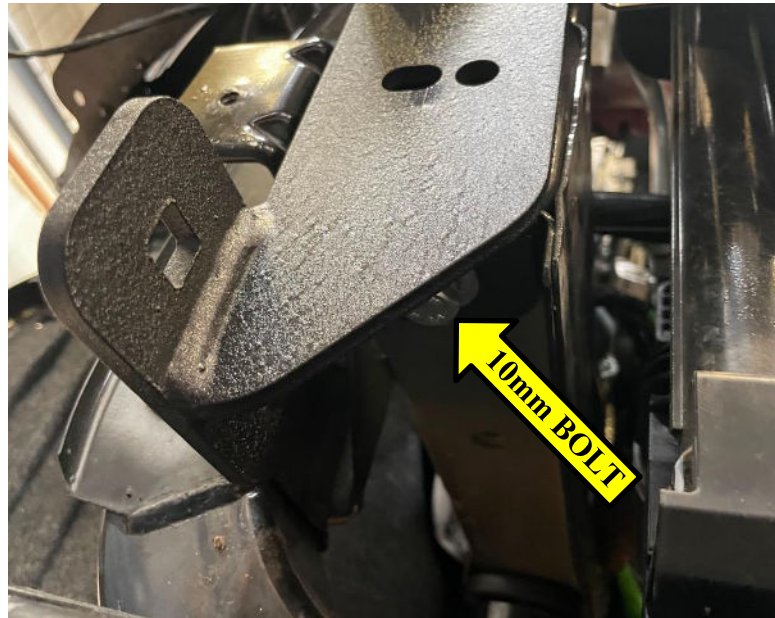


9. Using a 13 mm socket, remove the two hex head (1 per side) bolts holding the crash bar support to the cross member. Set hardware aside to be reused.

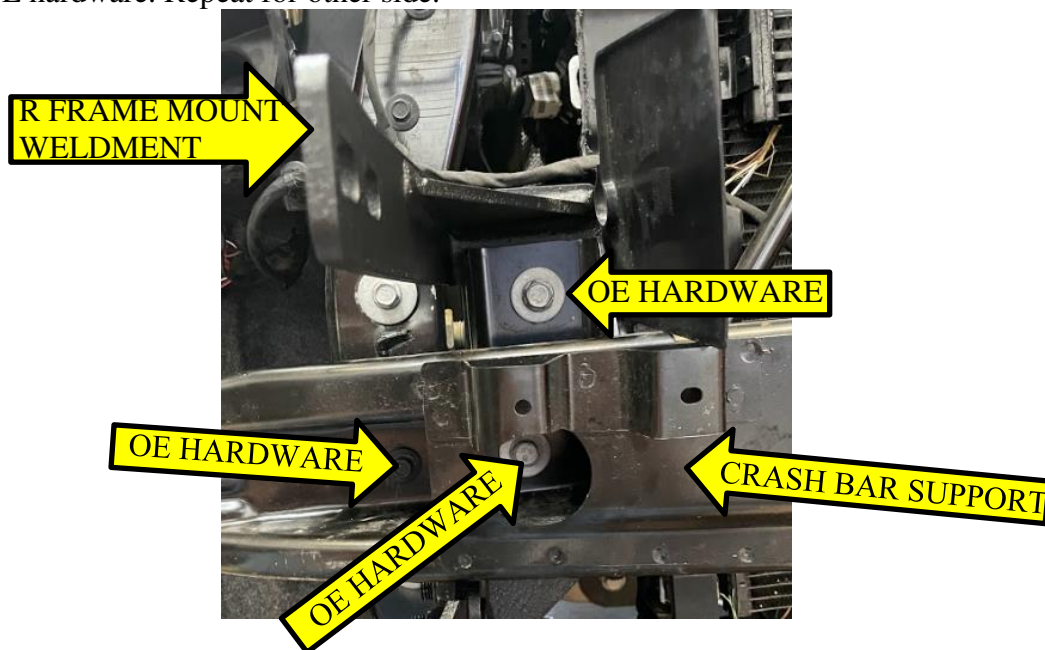


## V. INSTALLATION OF HAMMERHEAD PUSH BUMPER

1. Lay push bumper face down on a carpeted surface or a piece of cardboard. Install all lights in push bumper with brackets and hardware provided by light manufacturer.
2. Using a 15 mm socket, install the right frame mount weldment using 10 mm bolt supplied in hardware kit as shown below. Repeat for the other side. Do not fully tighten.



3. Using a 13mm socket, install the crash bar support over the right frame mount weldment using OE hardware. Repeat for other side.





- Using a  $\frac{3}{4}$ " socket, install the right push bumper frame mount to the right frame mount weldment using  $\frac{1}{2}$ " carriage head bolts, flat washers, and nylock nuts from hardware kit #208. Do not fully tighten. Repeat for other side.



- Using a hoist or a few good friends, lift the push bumper to begin the test fit. Using hardware from kit #208, attach the push bumper to frame mounts (Do not fully tighten push bumper). Align push bumper to be center to the vehicle. At this time fully tighten crash support bar to your frame mount weldments, and your push bumper mounts to the frame mounts. Remove push bumper when completed.
- Lay bumper face down on carpet or some cardboard. Measure from edge one 6 mm ( $\sim \frac{1}{4}$ "") and scribe a mark for your width cut of 20 mm ( $\sim \frac{3}{4}$ ""). Now measure from edge two 60 mm ( $\sim 2 \frac{3}{8}$ "") for the top cut of the rectangle, and a 130 mm ( $\sim 5 \frac{1}{8}$ "") from edge two for the bottom cut of the rectangle.



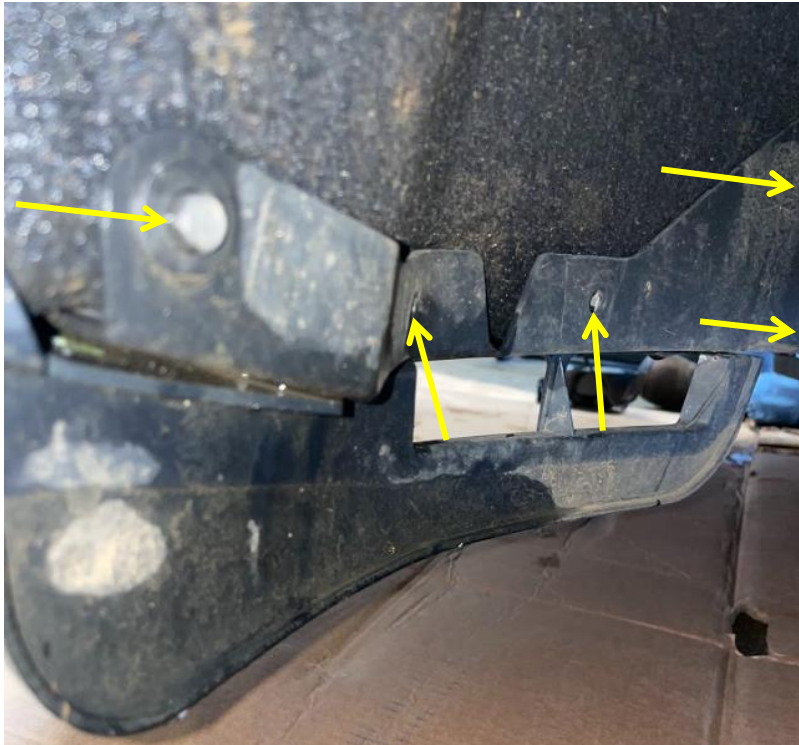
7. At this time reconnect the fog light wiring harness located on the passenger side of the bumper (if applicable).
8. Now the slots are complete, use a hoist or a friend to lift bumper to be snapped back on. Align the bumper slots to the push bumper mounts and slide the bumper on. Start attaching the bumper from the fender flair and working your way in. This allows for the clips to line back up properly making sure the bumper is on correctly. Work your way in to the center.



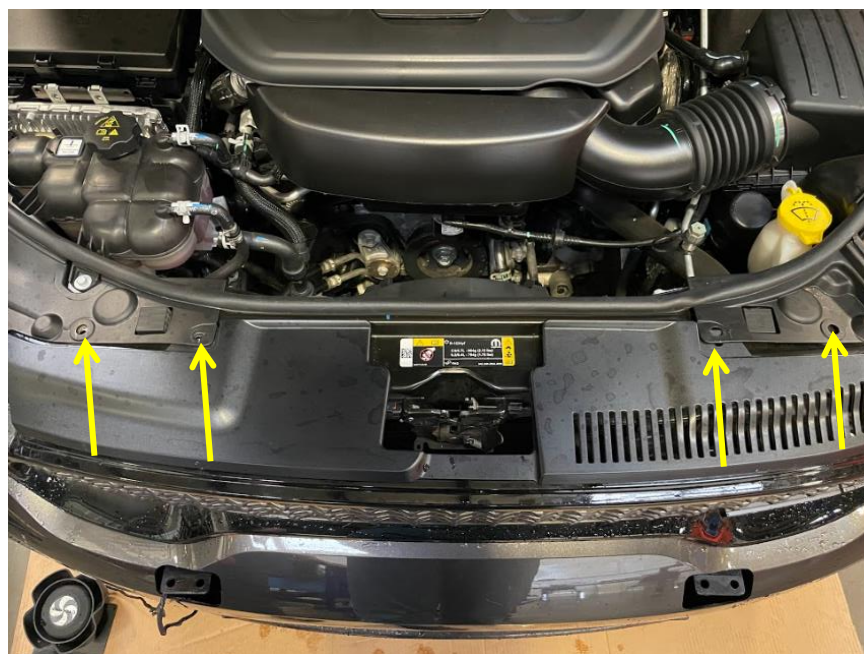
9. Using 4 plastic rivets (2 per side) re-install the fender wheel well liner back to the original position.



10. Using a 7 mm socket, re-install the 10 screws (5 per side) in the bottom of the fender holding the liner in the original position.



11. Using 4 plastic rivets, re-install the grille shroud by pushing the rivets in the holes located by the arrows in the picture below.



12. Using a 13mm socket, re-install the skid plate using OE hardware.



13. Tighten all original hardware to specified torque requirements.

14. Using a hoist or a few friends, attach push bumper to push bumper mounts using hardware kit #208. Start all bolts before aligning push bumper. Align push bumper to a minimum of 1/4" from plastic fascia. When truck flexes off-road, this distance allows your push bumper and body to have clearance. Fully tighten push bumper to push bumper mount bolts with 3/4" socket.



**Congratulations! Your product installation is now complete.  
Thank you for your purchase!**