



 HammerheadArmor  Hammerheadarmor  HammerheadOff-RoadArmor

# 2022-20XX FORD EXPLORER GUARDIAN SERIES PUSH BUMPER INSTALLATION INSTRUCTIONS



## SAFETY

**Know safety, no injury. Know injury, no safety. ~Author Unknown**

If there are any questions, call 1-855-HHTOUGH

**READ ALL SAFETY INSTRUCTIONS BEFORE INSTALLATION**

- FOLLOW ALL INSTRUCTIONS FOR PROPER ASSEMBLY
- WEAR APPROPRIATE EYE PROTECTION
- EXERCISE CARE WHEN LIFTING COMPONENTS
- USE APPROPRIATE TORQUE FOR BOLTS
- RE-TORQUE HARDWARE AT EVERY OIL CHANGE.

<b>Suggested Torque Values For Steel Grade 5 Standard Bolts</b>		
BOLT DIAMETER (INCH)	THREADS PER INCH	TORQUE (POUND - FEET)
1/4	20	7
5/16	18	14
3/8	16	25
7/16	14	40
1/2	13	60
9/16	12	88
5/8	11	120
3/4	10	200
7/8	9	302
1	8	466

<b>Suggested Torque Values For Steel Grade 8.8 Metric Bolts</b>		
BOLT DIAMETER (mm)	THREAD PITCH (mm)	TORQUE (POUND-FEET)
6	1.0	7
8	1.25	16
10	1.5	32
12	1.75	55
14	2.0	88
16	2.0	140
18	2.5	195
20	2.5	275
22	2.5	375
24	3.0	475



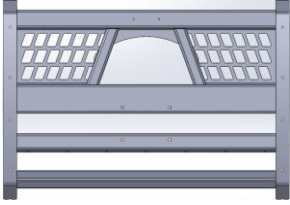
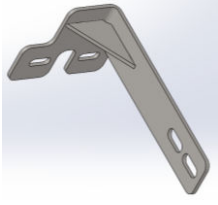

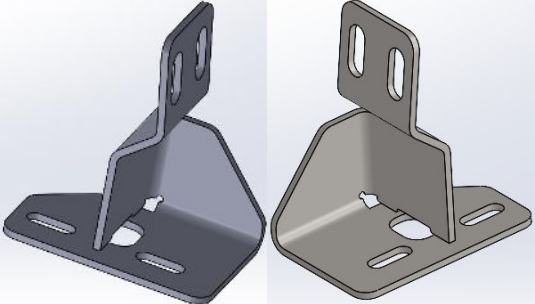
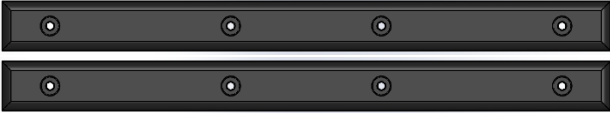
**WARNING: Cancer  
and Reproductive Harm**

[www.P65Warnings.ca.gov](http://www.P65Warnings.ca.gov)



## I. PARTS LIST

Note: Brush guard configuration may differ.

ITEM 1	PURSUIT SERIES GG	QTY. 1	ITEM 2	RIGHT FRAME MOUNT WELDMENT	QTY. 1
					
ITEM 3	LEFT FRAME MOUNT WELDMENT	QTY. 1	ITEM 4	HARDWARE KITS	
				✓ <b>HARDWARE KIT #208</b> (60K-56-0208) ✓ <b>HARDWARE KIT #219</b> (60K-56-0219)	
ITEM 5	L AND R GG FRAME MOUNT	QTY. 2	ITEM 6	UHMW TRIM	QTY. 2
					

**REMOVE CONTENTS FROM BOX AND VERIFY ALL PARTS ARE PRESENT.**

If there are any questions, call 1-855 HHTOUGH or email [HHORDERS@hammerheadarmor.com](mailto:HHORDERS@hammerheadarmor.com)

## II. TOOL LIST

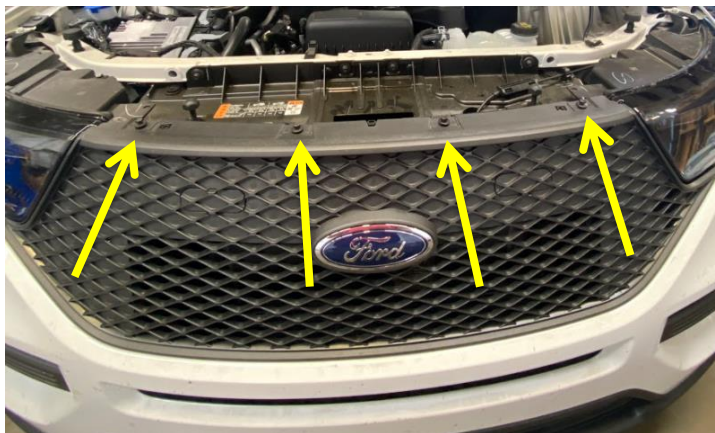
- ✓ A good friend
- ✓ Basic tool set
- ✓ Blue masking tape
- ✓ Torx 10 bit
- ✓ 7mm socket
- ✓ 10mm socket
- ✓ 13mm socket
- ✓ 3/4" socket
- ✓ Ratchet
- ✓ Ratchet extension

### III. VEHICLE PREPARATION

1. Park vehicle on level surface.
2. Engage parking brake and disconnect battery.
3. Using blue masking tape, mask along the profile of your truck above the bumper. This will help protect your truck from any accidental scratches.

### IV. REMOVAL OF BUMPER

1. Open the hood and find the 4 flange bolts found on top of the grille shroud. Using a 10mm wrench or socket, remove the bolts. Keep the flange bolts to be reused later.



2. On each side of the vehicle, locate the 6 plastic rivets (3 per side). Using a trim removal tool pry the head and body of the rivets out. Set plastic rivets aside to be reused.



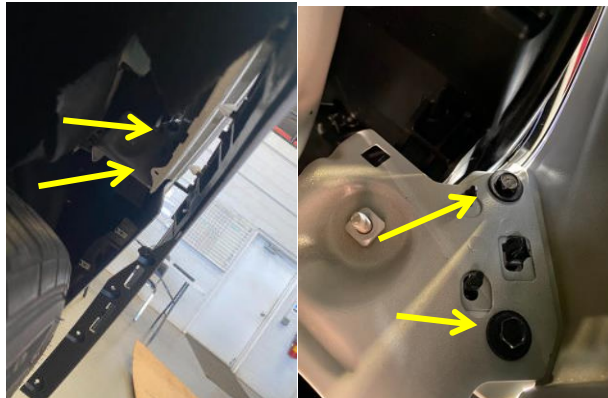
- Using a 7mm socket, locate the 8 flange bolts (4 per side) at the bottom of the fender liner. Remove the bolts detaching the side bumper from the fender liner. Set bolts aside to be reused.



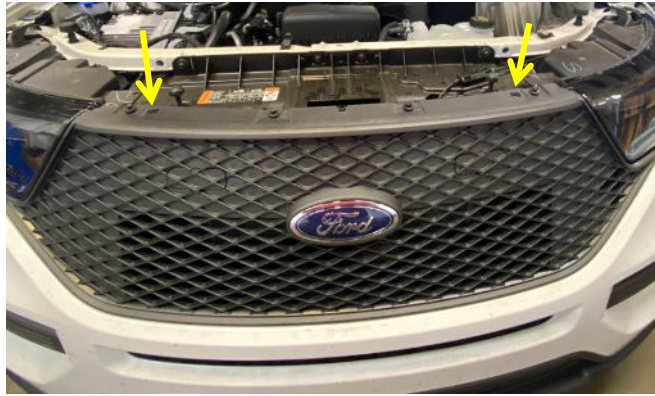
- On the bottom of the bumper, located the 5 flange bolts in the center and 2 flange bolts in front of each wheel. Use a 7 mm wrench or socket to remove the nine flange bolts. Set hardware aside to be reused.



- In the wheel well pull back the liner and locate 4 flange bolts (2 per side). Using a 10mm wrench or socket remove the 4 flange bolts. Set hardware aside to be reused.



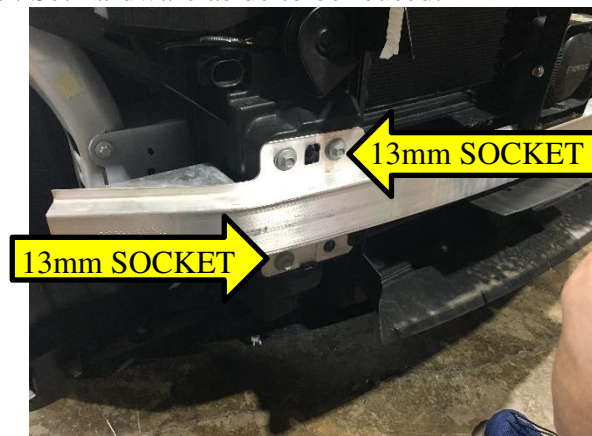
6. With the bolts removed, remove the bumper by lifting up the top of the grille. There are two clips holding the bumper in place, lifting up and pulling forward on the bumper to remove it from the vehicle.



7. With the bumper removed, you can now remove the upper and lower air inlets.

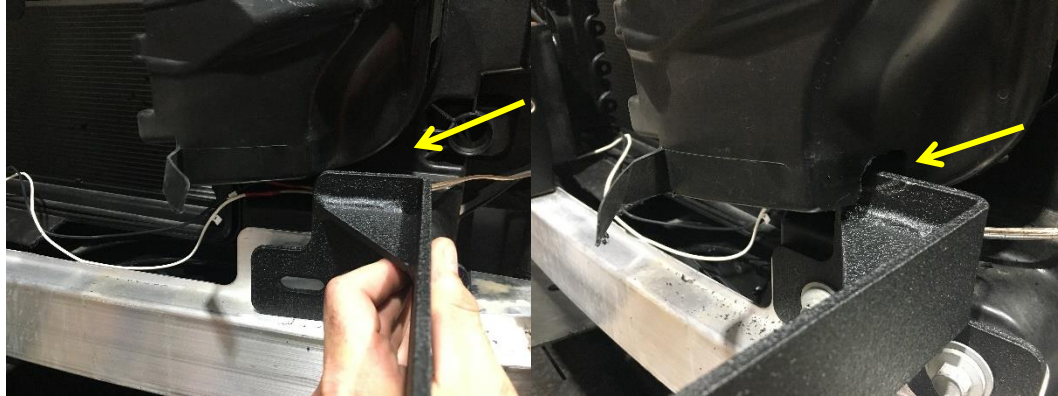


8. Using a 13 mm socket, remove 8 hex head bolts (4 per side) from the bumper bar as shown below. Do not remove the bumper bar. Set hardware aside to be reused.

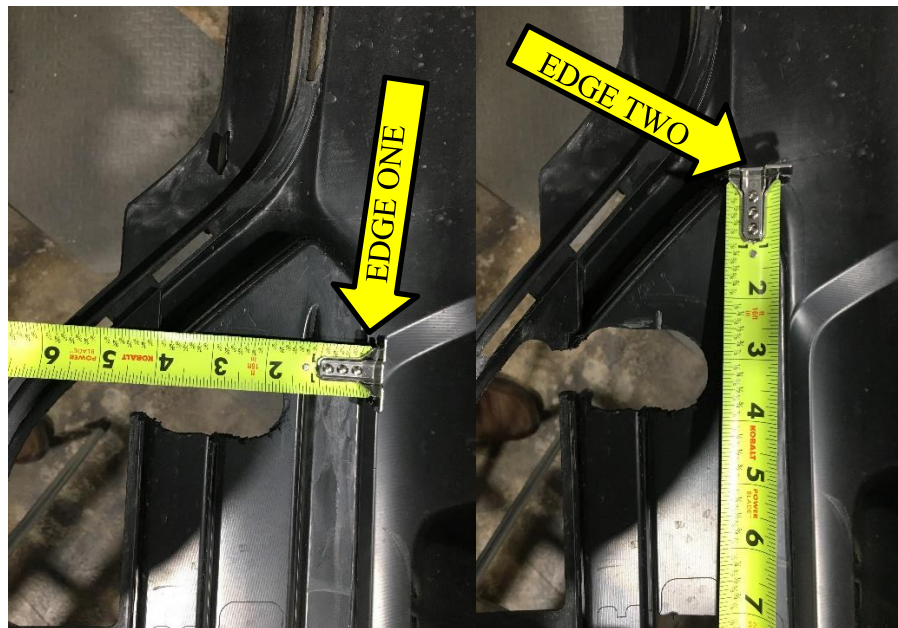


## V. INSTALLATION OF HAMMERHEAD PUSH BUMPER

1. Lay push bumper face down on a carpeted surface or a piece of cardboard. Install all lights in push bumper with brackets and hardware provided by light manufacturer.
2. Place the upper air inlet back on the vehicle. Using the driver side frame mount as reference trim the upper air inlet so that the frame mount does not interfere with the upper air inlet. The passenger side should not interfere, however if interference is present then trim the passenger side as well.



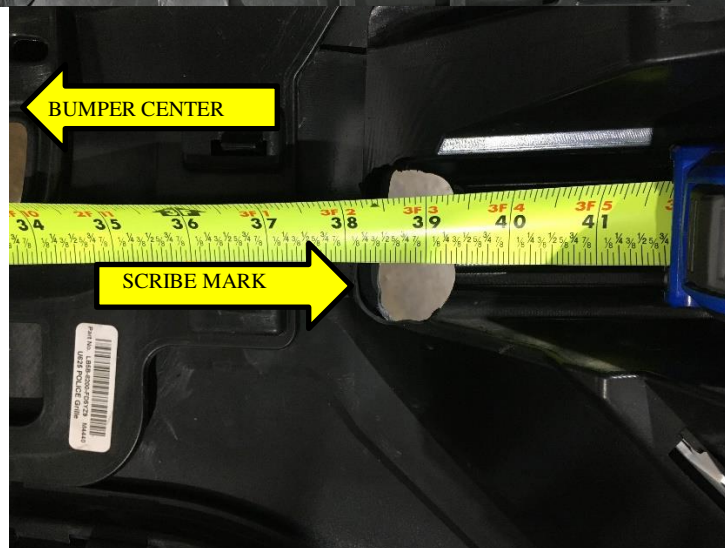
3. Lay the bumper on a carpeted surface or a piece of cardboard. Measure for trimming of the bumper to allow the frame mounts to pass through the bumper. On the passenger side measure from the edge one 44.5mm (~1.75in) and scribe a mark for the 65 mm (~2.5625in) length cut. Measure from edge two 63.5mm (~2.5in) and scribe a mark for the 31.75mm (~1.25in) width cut.



4. On the driver side, measure from edge one 63.5 mm (~2.5in) and scribe a mark for the 28.5mm (~1.125in) width cut. Measure from edge two 38mm (~1.5in) and scribe a mark for the 89mm (~3.5in) length cut.

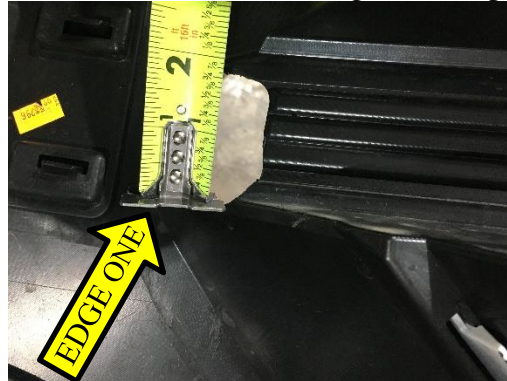


5. With the lower frame mount cutouts trimmed in the bumper. Now measure from the center line of the center opening of the bumper, 968mm (~38.125in) and scribe a mark on both driver and passenger sides.





- From the scribe marks measure a 25.4mm (~1in) away from the scribe mark for the width cut. Then measure from edge one a 50mm (~2in) for the length cut. Repeat on opposite side.



- At this time tighten down both upper and lower frame mounts using 13mm sockets and reconnect any wiring harnesses (if applicable).
- Now the slots are complete, use a hoist or a friend to lift bumper to be snapped back on. Align the bumper slots to the push bumper mounts and slide the bumper on. Start attaching the bumper from the center and working your way out. This allows for the clips to line back up properly making sure the bumper is on correctly. Work your way out to the fender flairs.



- Using a 10mm wrench or socket reinstall the 4 flange bolts (2 per side) from the fender wheel well to the bumper.



- Using a 7mm wrench or socket re-install the 5 flange bolts on the bottom of the bumper in the center and 2 flange bolts in front of each wheel.



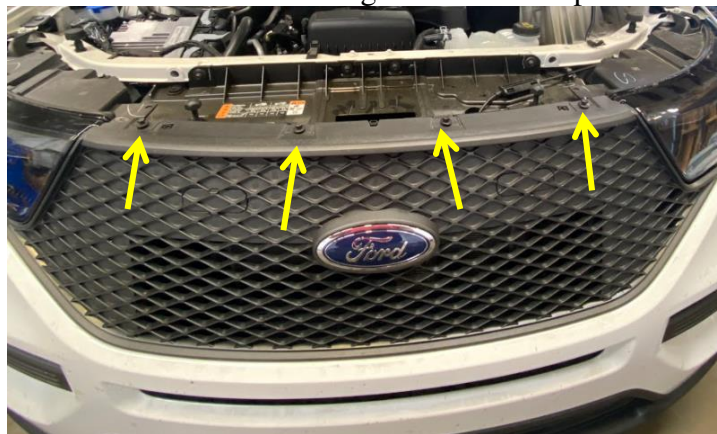
- Using a 7mm socket, locate the 8 flange bolts (4 per side) at the bottom of the fender liner. Reinstall the bolts to the side bumper from the fender liner.



10. Using the 6 plastic rivets (3 per side) from before, reinstall the lower wheel well liner.



11. Using a 10mm wrench or socket re-install the 4 flange bolts in the top of the bumper under the hood



12. Tighten all hardware to recommended torque specs listed above.

13. Using a hoist or a few friends, attach push bumper to push bumper mounts using hardware kit #208. Start all bolts before aligning push bumper. Align push bumper to a minimum of 1/4" from plastic fascia. When truck flexes off-road, this distance allows your push bumper and body to have clearance. Fully tighten push bumper to push bumper mount bolts with 3/4" socket.



**Congratulations! Your product installation is now complete.  
Thank you for your purchase!**