



2014-2023 INTERNATIONAL CV XD SERIES WINCH BUMPER *INSTALLATION INSTRUCTIONS*



SAFETY

Know safety, no injury. Know injury, no safety. ~Author Unknown

If there are any questions, call 1-855-HHTOUGH

READ ALL SAFETY INSTRUCTIONS BEFORE INSTALLATION

- FOLLOW ALL INSTRUCTIONS FOR PROPER ASSEMBLY
- WEAR APPROPRIATE EYE PROTECTION
- EXERCISE CARE WHEN LIFTING COMPONENTS
- USE APPROPRIATE TORQUE FOR BOLTS
- RE-TORQUE HARDWARE AT EVERY OIL CHANGE.

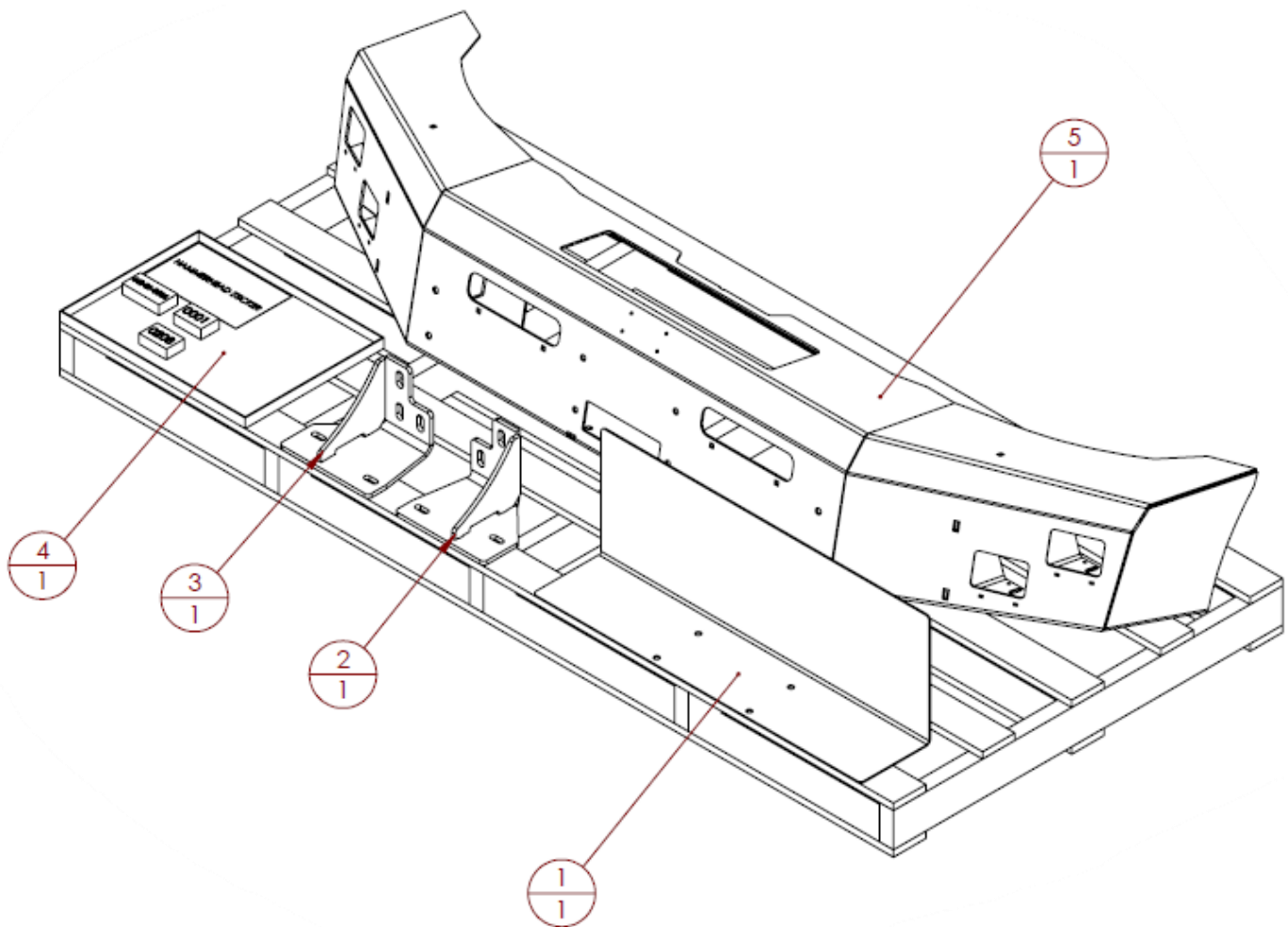
Suggested Torque Values For Steel Grade 5 Standard Bolts		
BOLT DIAMETER (INCH)	THREADS PER INCH	TORQUE (POUND - FEET)
1/4	20	7
5/16	18	14
3/8	16	25
7/16	14	40
1/2	13	60
9/16	12	88
5/8	11	120
3/4	10	200
7/8	9	302
1	8	466

Suggested Torque Values For Steel Grade 8.8 Metric Bolts		
BOLT DIAMETER (mm)	THREAD PITCH (mm)	TORQUE (POUND-FEET)
6	1.0	7
8	1.25	16
10	1.5	32
12	1.75	55
14	2.0	88
16	2.0	140
18	2.5	195
20	2.5	275
22	2.5	375
24	3.0	475



I. PARTS LIST

ITEM NO.	QTY	PART NUMBER	DESCRIPTION
1	1	601-56-6133	WORK TRAY
2	1	601-56-6179	L FRAME MOUNT WELDMENT
3	1	601-56-6180	R FRAME MOUNT WELDMENT
4	1	60H-56-0311	INSTALL KIT #311
5	1	60P-56-1078	600-56-1078 POLISHED



REMOVE CONTENTS FROM BOX AND VERIFY ALL PARTS ARE PRESENT.
 If there are any questions, call 1-855 HHTOUGH or email HHORDERS@hammerheadarmor.com

II. TOOL LIST

- ✓ Basic tool set
- ✓ Blue masking tape
- ✓ Torx 30 bit
- ✓ 24mm socket
- ✓ 24mm wrench
- ✓ ¾" socket
- ✓ Ratchet extension

III. VEHICLE PREPARATION

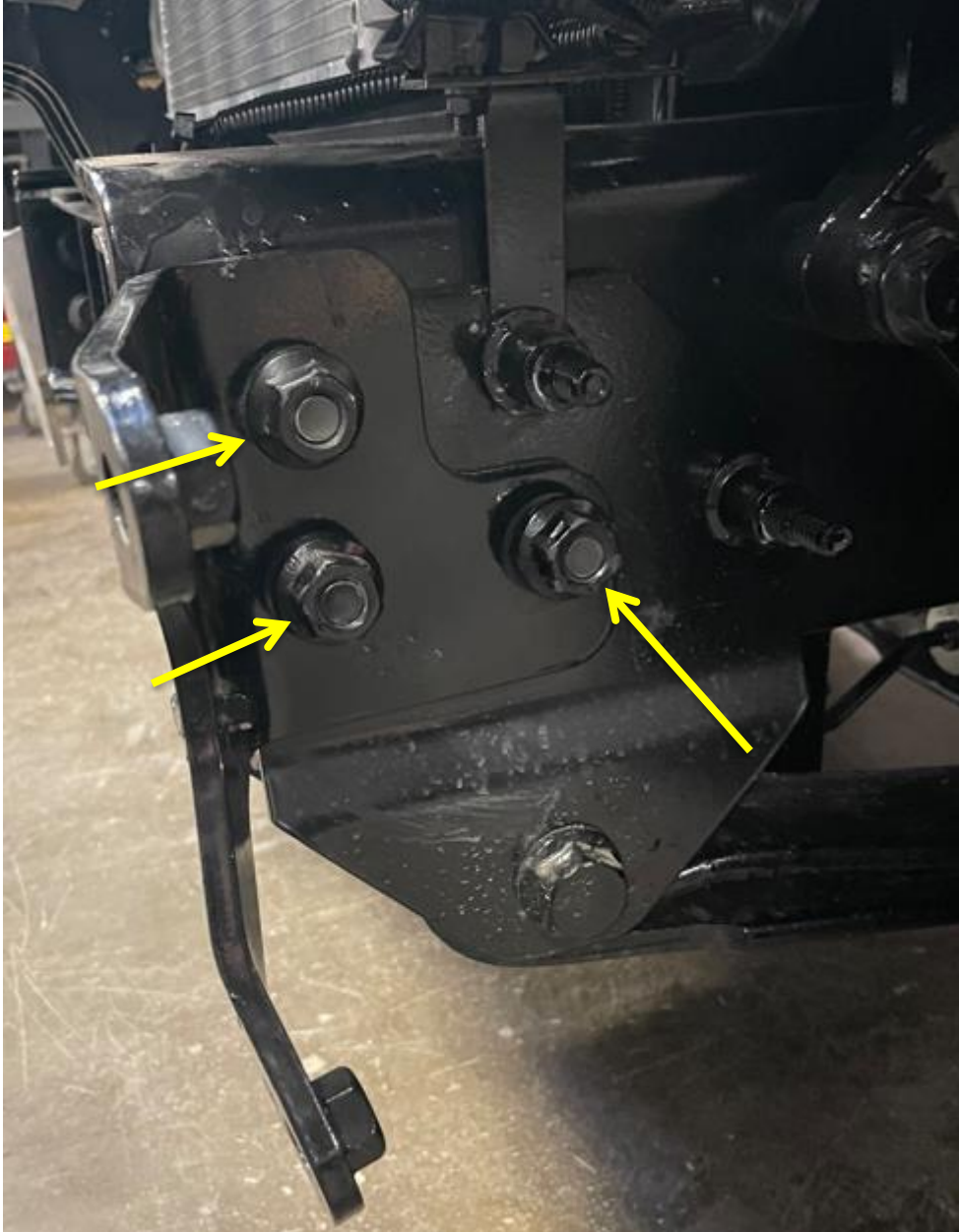
1. Park vehicle on level surface.
2. Engage parking brake and disconnect battery.
3. Using blue masking tape, mask along the profile of your truck above the bumper. This will help protect your truck from any accidental scratches.

IV. REMOVAL OF OE BUMPER

1. Using a torx 30 bit, remove four bolts retaining bumper to frame of vehicle. Remove the bumper from the vehicle and set aside.

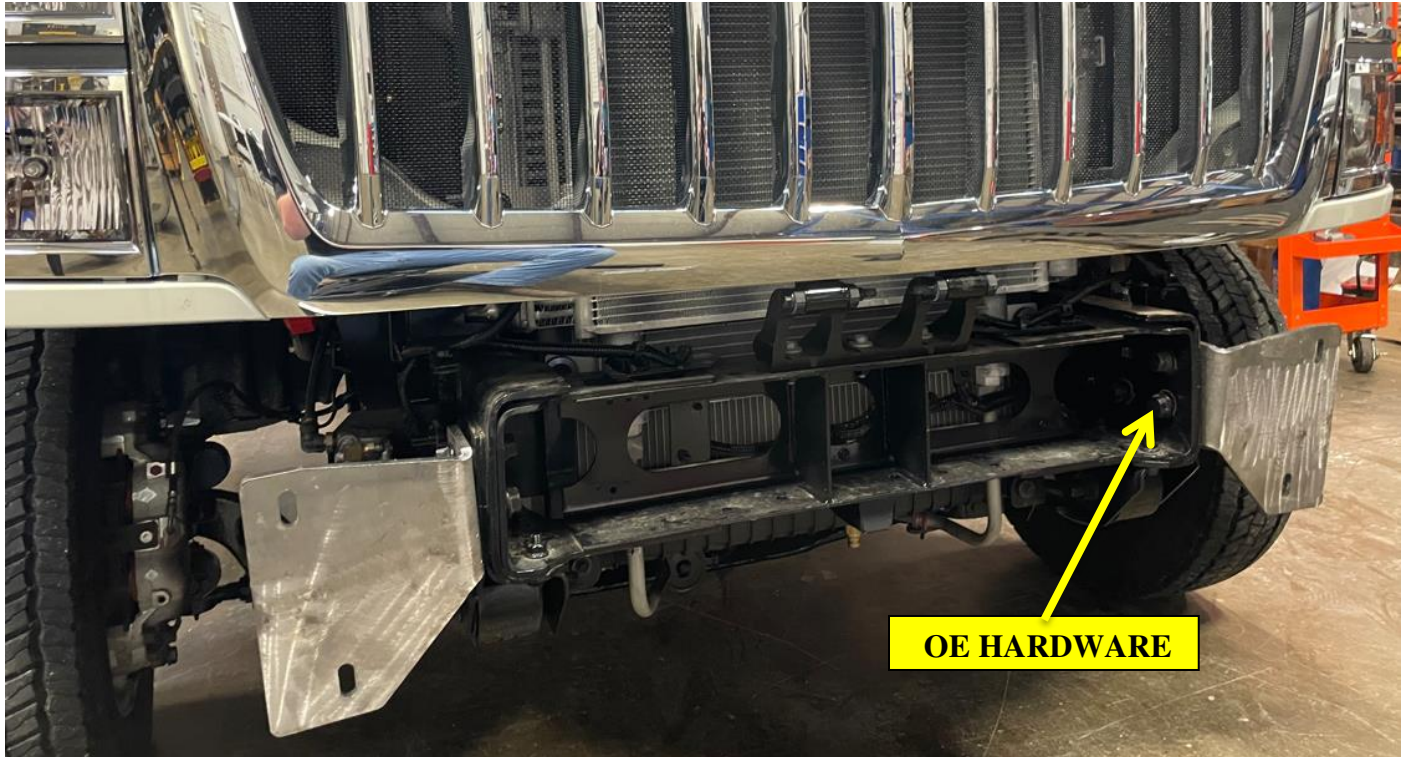


- Using 24mm socket and wrench, remove OE hardware attaching bumper mount to frame. (three per side) Set hardware aside as it will be reused. Remove bumper mounts and set aside. Bumper mounts will not be reused.



V. INSTALLATION OF HAMMERHEAD BUMPER

1. Lay bumper face down on a carpeted surface or a piece of cardboard. Install all lights in bumper with brackets and hardware provided by light manufacturer. Install winch into bumper at this time using hardware supplied by winch manufacturer. A work tray is included in kit and attaches to bumper in place of a winch.
2. Using a 24mm socket and wrench and OE hardware from removal step 2, attach L and R frame mount weldments to frame of truck as shown below.



3. Using a hoist or a few friends, attach bumper to frame mounts using hardware kit #208. Start all bolts before aligning bumper. Align bumper a minimum of 1/4" below plastic fascia. When truck flexes off-road, this distance allows your bumper and body to have clearance. Fully tighten bolts with 3/4" socket. Fully tighten frame mount bolts as well at this time.



**Congratulations! Your product installation is now complete.
Thank you for your purchase!**



INTERNATIONAL CV FLIP DOWN BRUSH GUARD (FOR USE WITH 600-56-1078 BUMPER)

BGUARD ASSEMBLY/INSTALLATION INSTRUCTIONS



SAFETY

Know Safety, no injury. Know injury, no safety. -Author Unknown
If there are any questions, call 1-855-HHTOUGH

- **READ ALL SAFETY INSTRUCTIONS BEFORE INSTALLATION**
 - FOLLOW ALL INSTRUCTIONS FOR PROPER ASSEMBLY
 - WEAR APPROPRIATE EYE PROTECTION
 - EXERCISE CARE WHEN LIFTING COMPONENTS
 - USE APPROPRIATE TORQUE FOR BOLTS
 - BLUE THREAD LOCKING COMPOUND IS RECOMMENDED ON ALL BOLTS



Suggested Torque Values For Steel Grade 5 Standard Bolts

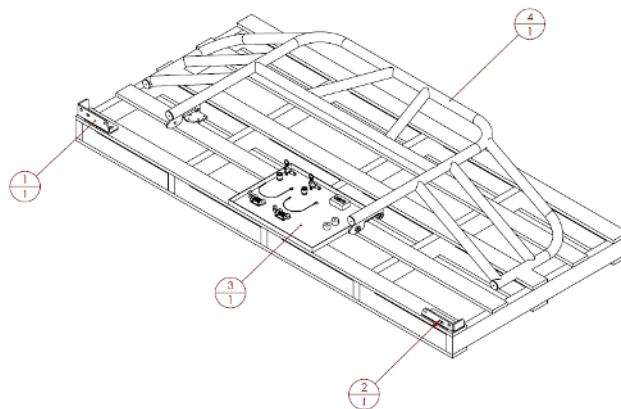
BOLT DIAMETER (INCH)	THREADS PER INCH	TORQUE (POUND - FEET)
1/4	20	7
5/16	18	14
3/8	16	25
7/16	14	40
1/2	13	60
9/16	12	88
5/8	11	120
3/4	10	200
7/8	9	302
1	8	466

Suggested Torque Values For Steel Grade 8.8 Metric Bolts

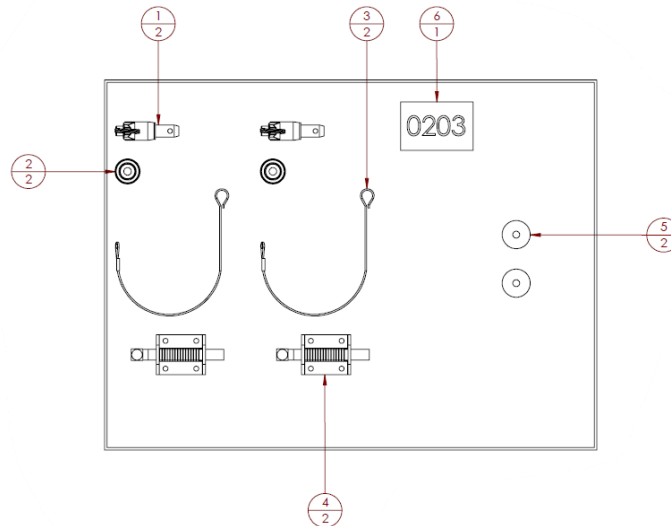
BOLT DIAMETER (mm)	THREAD PITCH (mm)	TORQUE (POUND- FEET)
6	1.0	7
8	1.25	16
10	1.5	32
12	1.75	55
14	2.0	88
16	2.0	140
18	2.5	195
20	2.5	275
22	2.5	375
24	3.0	475

I. PARTS LIST

ITEM NO.	QTY	PART NUMBER	DESCRIPTION	
1	1	601-56-5258	R BUMPER MOUNT	-
2	1	601-56-5259	L BUMPER MOUNT	-
3	1	60H-56-0271	INSTALL KIT #271	-
4	1	60P-58-0114	600-58-0114 POLISHED	-



ITEM NO.	QTY	PART NUMBER	DESCRIPTION	
1	2	315-16-0012	1/2" DIA 1-5/16 USABLE LENGTH	-
2	2	443-02-3951	9732K120_HIGH-LOAD FASTENER-MOUNT COMPRESSION SPRING	-
3	2	443-10-1840	Pin Lanyard End Loop and Tab	-
4	2	601-56-5373	PANELOC SLAM LATCH	-
5	2	601-56-5595	SHIM 2	-
6	1	60K-56-0203	HARDWARE KIT #203	-



REMOVE CONTENTS FROM BOX AND VERIFY ALL PARTS ARE PRESENT.

If there are any questions, call 1-855 HHTOUGH or email HHORDERS@hammerheadarmor.com

II. TOOL LIST

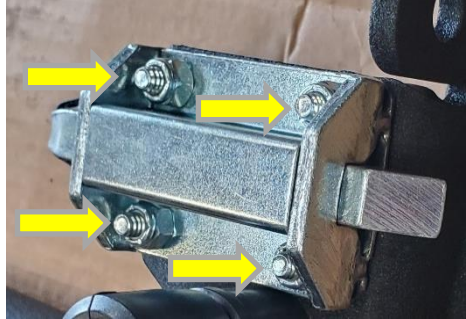
1. A Good Friend
2. Basic Tool Kit
3. Blue Masking Tape
4. Trim Tool
5. 3/4" wrench or socket
6. 9/16" wrench or socket
7. 1/4" Allen key
8. 7/16" wrench
9. T-30 Torx

III. VEHICLE PREPARATION

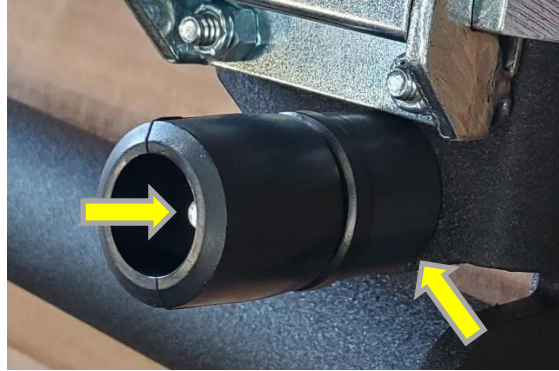
1. Park vehicle on level surface.
2. Engage parking brake and disconnect battery.
3. Using blue masking tape, mask along the profile of your truck above the bumper. This will help protect your truck from any accidental scratches.

ASSEMBLY OF HAMMERHEAD BRUSHGUARD

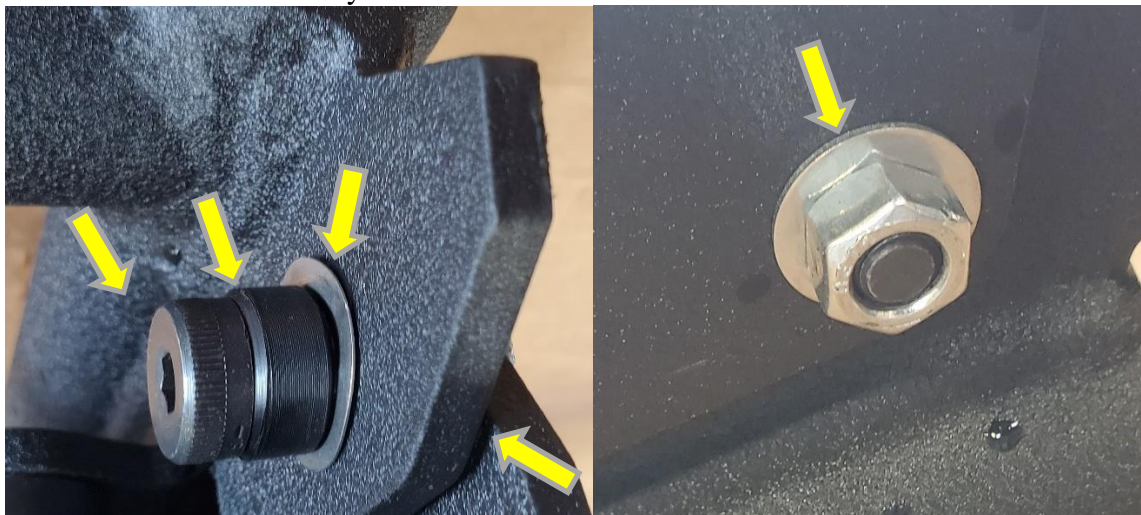
1. Lay brush guard face down on a carpeted surface or piece of cardboard.
2. Install Paneloc slam latches with (8) T-30 torx bolts and (8) nylock nuts from hardware kit #203. Tighten with 7/16" wrench and T-30 torx.



3. Install rubber compression springs with (2) 7/16" hex bolts, (2) flat washers, and (2) nylock nuts from hardware kit #203. Place shim #2 between compression spring and brush guard. Tighten with a 7/16" socket and T-30 torx.



4. Install bumper mount brackets to the brush guard with (2) shoulder bolts, (4) spring washers, (2) flat washers, and (2) hex nuts from hardware kit #203. Use shim #1 between the shoulder bolt and hinge. Place a spring washer between the hinge and bumper mount. Tighten with a 9/16" wrench and 1/4 Allen key.





5. Loop lanyard around bumper mount bracket and through itself. Attach quick release pin to lanyard. Insert pin into the top hole of the bumper mount bracket. You will have to push the bracket down to compress the compression spring. You may have to push or pull the bracket against the latches, this helps to eliminate rattling.



6. Using a hoist or a few friends, attach brush guard to bumper using (4) carriage bolts, (4) flat washers, and (4) nylock nuts. Start all bolts before aligning brush guard. Tighten bolts with $\frac{3}{4}$ " wrench or socket.

II. OPERATION OF THE FLIP DOWN BRUSHGUARD

Opening brush guard:

1. Remove quick release pins from both sides.
2. Stand in the middle of the brush guard and pull both slam latch levers. The brush guard is ready to fold down.
3. Fold brush guard down. The hinge will rest against the bumper mounts.

Closing brush guard:

1. Lift brush guard up until slam latches engage. You will have to push it in to compress the compression springs.
2. Reinsert pins. You may have to push or pull brush guard to align pins. This helps to eliminate rattling.



**Congratulations! Your Installation is now complete.
Thank You for your purchase!**