



 HammerheadArmor  Hammerheadarmor  HammerheadOff-RoadArmor

2019-2023 Dodge Ram 2500- 5500 Defender Rear *INSTALLATION INSTRUCTIONS*



SAFETY

Know safety, no injury. Know injury, no safety. ~Author Unknown

If there are any questions, call 1-855-HHTOUGH

READ ALL SAFETY INSTRUCTIONS BEFORE INSTALLATION

- FOLLOW ALL INSTRUCTIONS FOR PROPER ASSEMBLY
- WEAR APPROPRIATE EYE PROTECTION
- EXERCISE CARE WHEN LIFTING COMPONENTS
- USE APPROPRIATE TORQUE FOR BOLTS
- RE-TORQUE HARDWARE AT EVERY OIL CHANGE.

Suggested Torque Values For Steel Grade 5 Standard Bolts		
BOLT DIAMETER (INCH)	THREADS PER INCH	TORQUE (POUND - FEET)
1/4	20	7
5/16	18	14
3/8	16	25
7/16	14	40
1/2	13	60
9/16	12	88
5/8	11	120
3/4	10	200
7/8	9	302
1	8	466

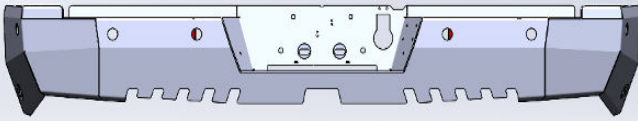

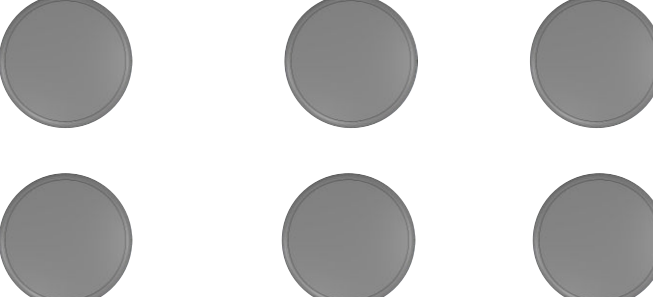
Suggested Torque Values For Steel Grade 8.8 Metric Bolts		
BOLT DIAMETER (mm)	THREAD PITCH (mm)	TORQUE (POUND- FEET)
6	1.0	7
8	1.25	16
10	1.5	32
12	1.75	55
14	2.0	88
16	2.0	140
18	2.5	195
20	2.5	275
22	2.5	375
24	3.0	475



**WARNING: Cancer
and Reproductive Harm**

www.P65Warnings.ca.gov

I. PARTS LIST

ITEM 1	DEFENDER REAR BUMPER	QTY. 1	ITEM 2	HARDWARE KITS	
			✓ HARDWARE KIT #04 (60K-56-0004) ✓ HARDWARE KIT #158 (60K-56-0158) LICENSE PLATE MOUNT KIT		
ITEM 3	ACCENT PLATES	QTY. 2	ITEM 4	SENSOR PLUGS	
					

REMOVE CONTENTS FROM BOX AND VERIFY ALL PARTS ARE PRESENT.
 If there are any questions, call 1-855 HHTOUGH or email HHORDERS@hammerheadarmor.com

II. TOOL LIST

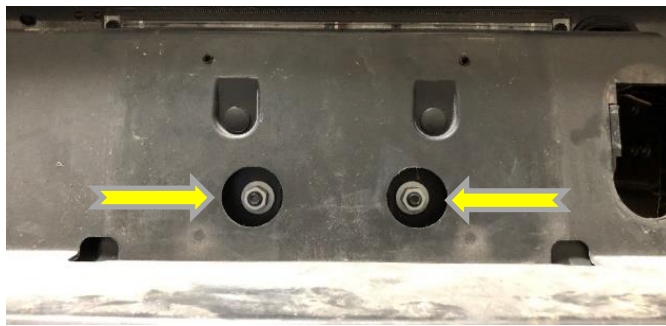
- ✓ A good friend
- ✓ Basic tool set
- ✓ Blue masking tape
- ✓ Torx 20 bit
- ✓ 10mm socket
- ✓ 13mm socket
- ✓ 15mm socket
- ✓ 7/16" socket
- ✓ 3/4" socket
- ✓ Ratchet extension

III. VEHICLE PREPARATION

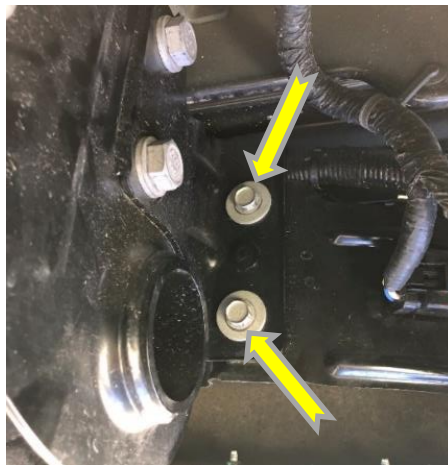
1. Park vehicle on level surface.
2. Engage parking brake and disconnect battery.
3. Using blue masking tape, mask along the profile of your truck above the bumper. This will help protect your truck from any accidental scratches.

IV. REMOVAL OF OE BUMPER

1. Disconnect trailer plug, sensors, and license plate lights (if applicable). Plugs are located on the driver side of the truck.
2. Using 10mm socket or screwdriver, remove the license plate from the truck to access the bolts behind it.
3. Using a 15mm socket, remove the 2 nuts from behind the license plate



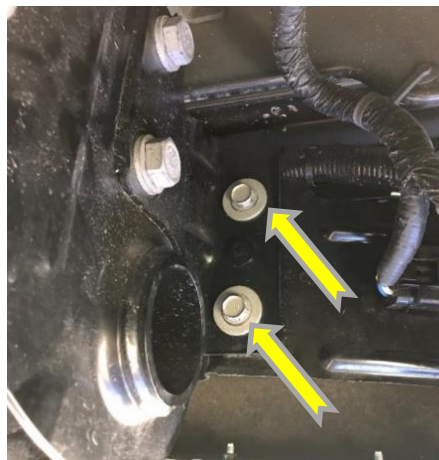
4. A. For trucks without OE drop step- Using a 15mm socket, remove the 2 bolts attaching the bumper to the frame. (Both Sides)



4. B. For trucks with OE drop step left side of truck – Using 13mm socket, remove small step brace (arrow). Using 16mm socket, remove bolts attaching OE bumper and step to frame.

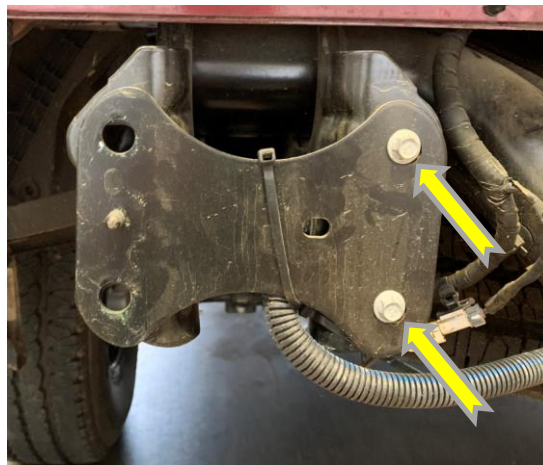


4. C. For trucks with OE drop step right side of truck - Using 15mm socket, remove the 2 bolts attaching the bumper to the frame. (Both Sides)



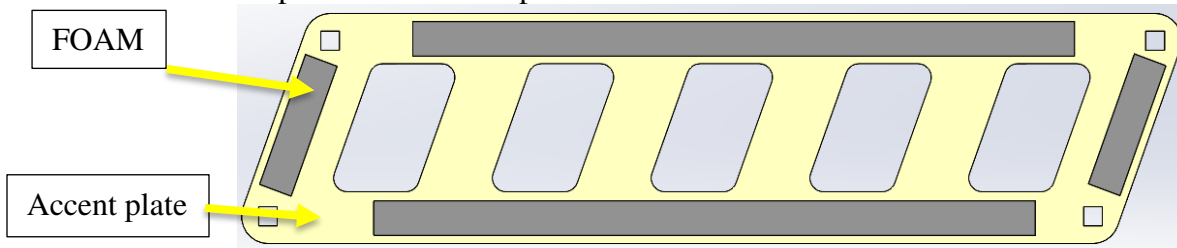
5. Remove OE bumper and set aside.

6. Using 13mm socket, remove two bolts attaching small metal plates to receiver hitch. (Both sides)
Metal plates will not be reused.

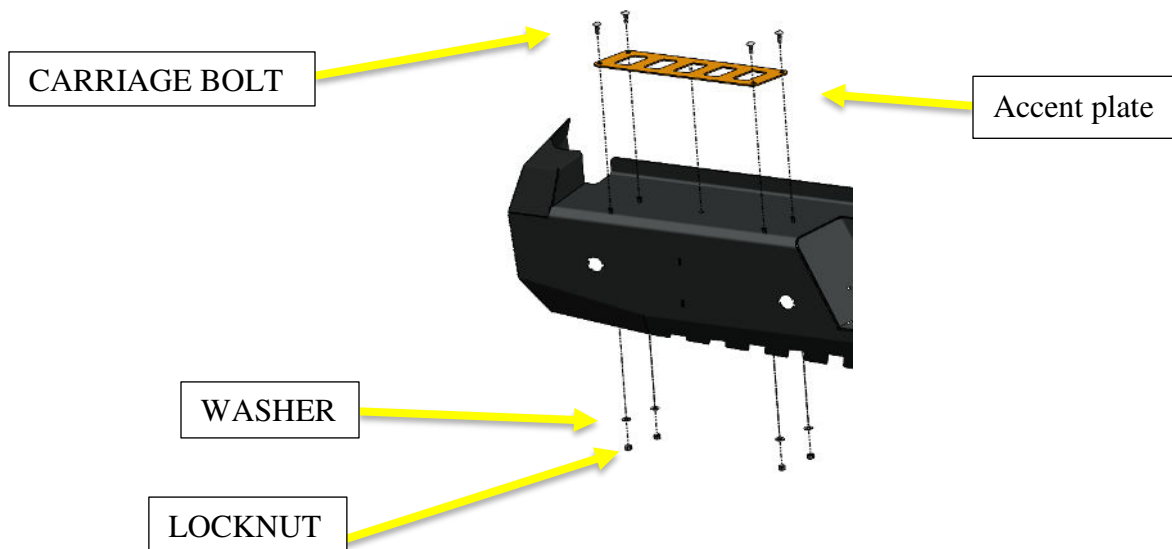


V. INSTALLATION OF HAMMERHEAD BUMPER

1. Place bumper on a carpeted surface or piece of cardboard.
2. Install accent plates: Start by applying the foam weather stripping included in the install kit to the edges of each accent plate as shown in the picture below. This prevents rubbing between the accent plates and the bumper.



3. Using a 7/16 socket install the accent plates using hardware kit#158.

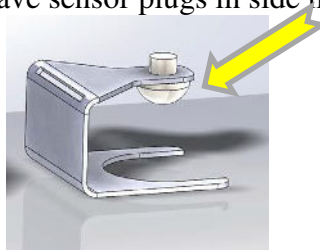


4. For bumpers with sensors, install rubber grommets in bumper. Place a drop of dishwashing soap on each sensor to lubricate it. Install OE sensors in bumper. The sensor's plugs need to be oriented the same way they are in the OE bumper.

NOTE: DO NOT TWIST SENSOR WHILE INSTALLING. THIS WILL DAMAGE IT.



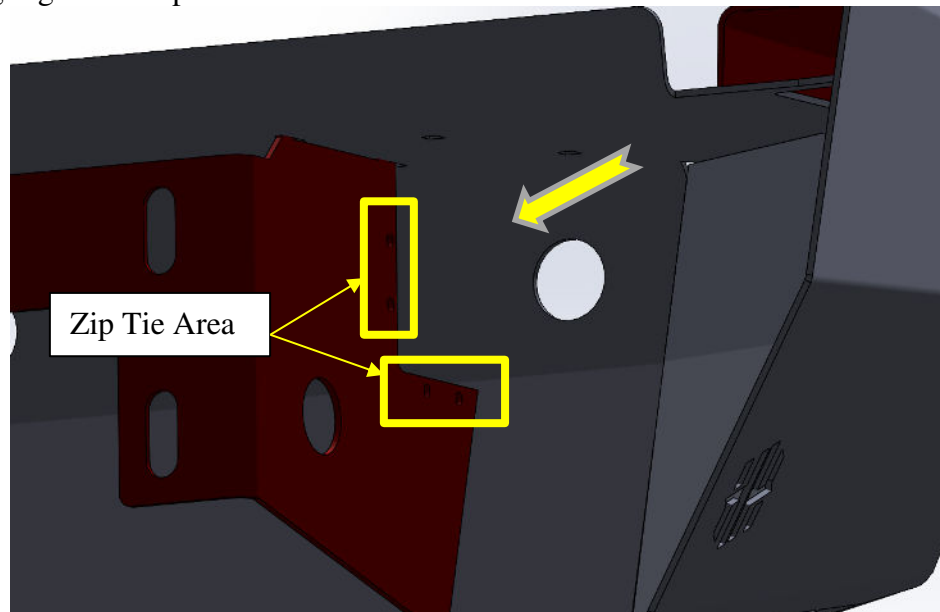
3. Install rubber bumper (arrow) in sensor clip. Some trucks have four sensors and some have six. For trucks with four sensors, leave sensor plugs in side holes.



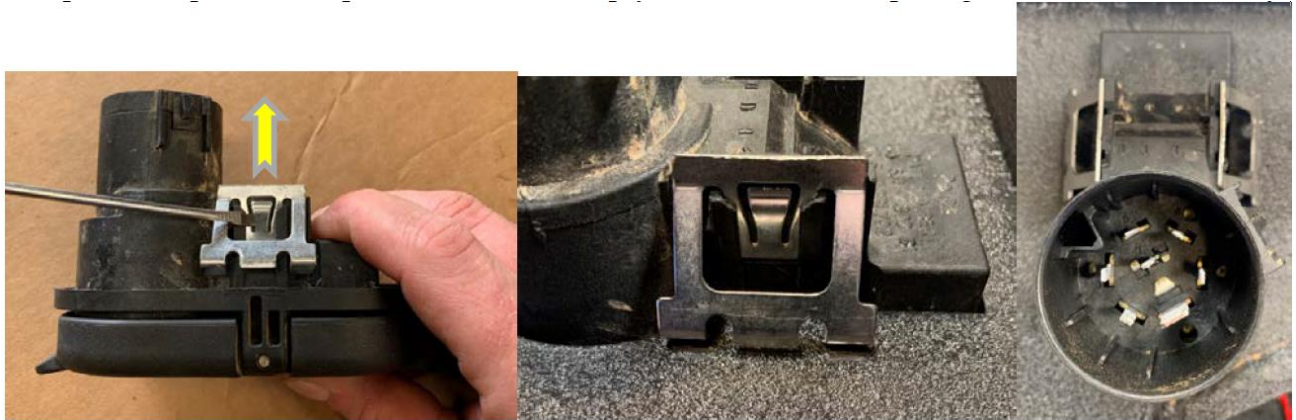
4. Slide sensor clip over grommet and ensure rubber bumper touches the back of the sensor. This clip will retain the sensor in the grommet.



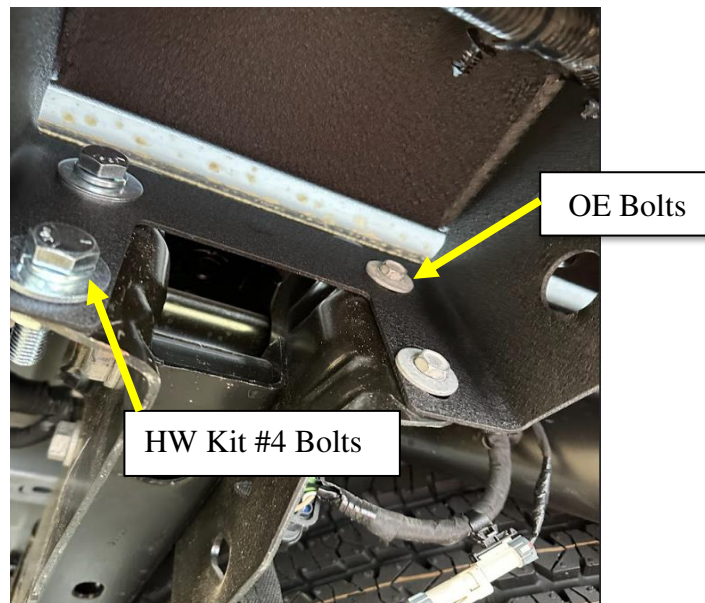
5. Install OE wiring harnesses and plug sensors in. start the harness on the driver side of the bumper. Running the wires through the interior cutouts in the bumper, the factory plug is too large to fit through the cutouts. There are holes located in the bumper mount brackets for zip ties to secure any loose or dangling wires in place



6. In this step, you will install the trailer plug connector. Use a small flathead screwdriver to remove the small stainless clips on the plastic housing. Gently pry up on the middle of the clip and slide the clip away from the housing. (in the direction of the arrow) (both sides) Place the plastic housing in the bumper and replace the clips. You will need to pry outward on the clips to get them to seat correctly.



7. Cut off OE license plate light plugs and use provided butt connectors to install LED license plate lights. Use heat gun to shrink wrap bullet connector after crimped. NOTE: Install LED license plate lights in bumper before splicing in with butt connectors.
8. Using a hoist or a few friends, attach bumper to frame using hardware kit #4 and small OE bolts that attached metal plate removed in step 6. Start all bolts before aligning bumper. Open the tailgate slowly to ensure a minimum of 3/8" clearance below tailgate and truck body. Tighten bolts with 3/4" socket and wrench and 13mm socket. Torque to values on page 2.





**Congratulations! Your product installation is now complete.
Thank you for your purchase!**