

HAMMERHEADARMOR.COM | 1-800-HHTOUGH



 HammerheadArmor  Hammerheadarmor  HammerheadOff-RoadArmor

## **2024-20XX INTERNATIONAL HV SFA (507/513) & SBA (607/613) XD SERIES FRONT BUMPER**



**601-56-1134/1135**

HAMMERHEADARMOR.COM | 1-800-HHTOUGH

# SAFETY

**Know safety, no injury. Know injury, no safety. ~Author Unknown**

If there are any questions, call 1-855-HHTOUGH

## **READ ALL SAFETY INSTRUCTIONS BEFORE INSTALLATION**

- FOLLOW ALL INSTRUCTIONS FOR PROPER ASSEMBLY
- WEAR APPROPRIATE EYE PROTECTION
- EXERCISE CARE WHEN LIFTING COMPONENTS
- USE APPROPRIATE TORQUE FOR BOLTS
- RE-TORQUE HARDWARE AT EVERY OIL CHANGE.

<b>Suggested Torque Values For Steel Grade 5 Standard Bolts</b>		
BOLT DIAMETER (INCH)	THREADS PER INCH	TORQUE (POUND - FEET)
1/4	20	7
5/16	18	14
3/8	16	25
7/16	14	40
1/2	13	60
9/16	12	88
5/8	11	120
3/4	10	200
7/8	9	302
1	8	466

<b>Suggested Torque Values For Steel Grade 8.8 Metric Bolts</b>		
BOLT DIAMETER (mm)	THREAD PITCH (mm)	TORQUE (POUND-FEET)
6	1.0	7
8	1.25	16
10	1.5	32
12	1.75	55
14	2.0	88
16	2.0	140
18	2.5	195
20	2.5	275
22	2.5	375
24	3.0	475




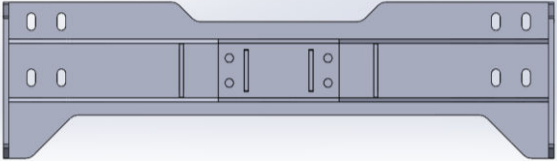
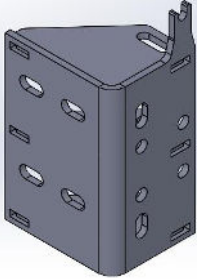
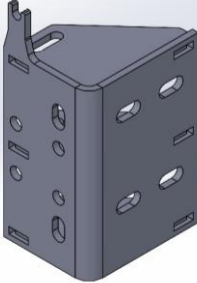
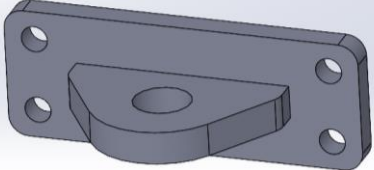

**WARNING: Cancer  
and Reproductive Harm**

[www.P65Warnings.ca.gov](http://www.P65Warnings.ca.gov)

07/11/2024

REV 00

**I. PARTS LIST**

<b>ITEM 1</b>	<i>XD SERIES FRONT BUMPER</i>	<b>QTY. 1</b>	<b>ITEM 2</b>	<i>CENTER TOW WELDMENT</i>	<b>QTY. 1</b>
					
<b>ITEM 3</b>	<i>RIGHT FRAME MOUNT</i>	<b>QTY. 1</b>	<b>ITEM 4</b>	<i>LEFT FRAME MOUNT</i>	<b>QTY. 1</b>
					
<b>ITEM 5</b>	<i>TOW HOOK WELDMENT</i>	<b>QTY. 1</b>	<b>ITEM 6</b>	<i>WELDNUT BRACKET</i>	<b>QTY. 2</b>
					
<b>ITEM 5</b>	<i>INSTALL KIT</i>				
<ul style="list-style-type: none"> <li>✓ <b>HARDWARE KIT #42</b> (60K-56-0042)</li> <li>✓ <b>HARDWARE KIT #46</b> (60K-56-0046)</li> <li>✓ <b>LICENSE PLATE MOUNT KIT</b></li> </ul>					

**REMOVE CONTENTS FROM BOX AND VERIFY ALL PARTS ARE PRESENT.**  
 If there are any questions, call 1-855 HHTOUGH or email [HHORDERS@hammerheadarmor.com](mailto:HHORDERS@hammerheadarmor.com)

## II. TOOL LIST

- ✓ A helper or crane
- ✓ Basic tool set
- ✓ Blue masking tape
- ✓ T50 Torx Bit
- ✓ 18mm socket
- ✓ 24mm socket
- ✓ 24mm wrench
- ✓ ¾ Socket
- ✓ Ratchet extension
- ✓ Needle nosed pliers
- ✓ Level

## III. VEHICLE PREPARATION

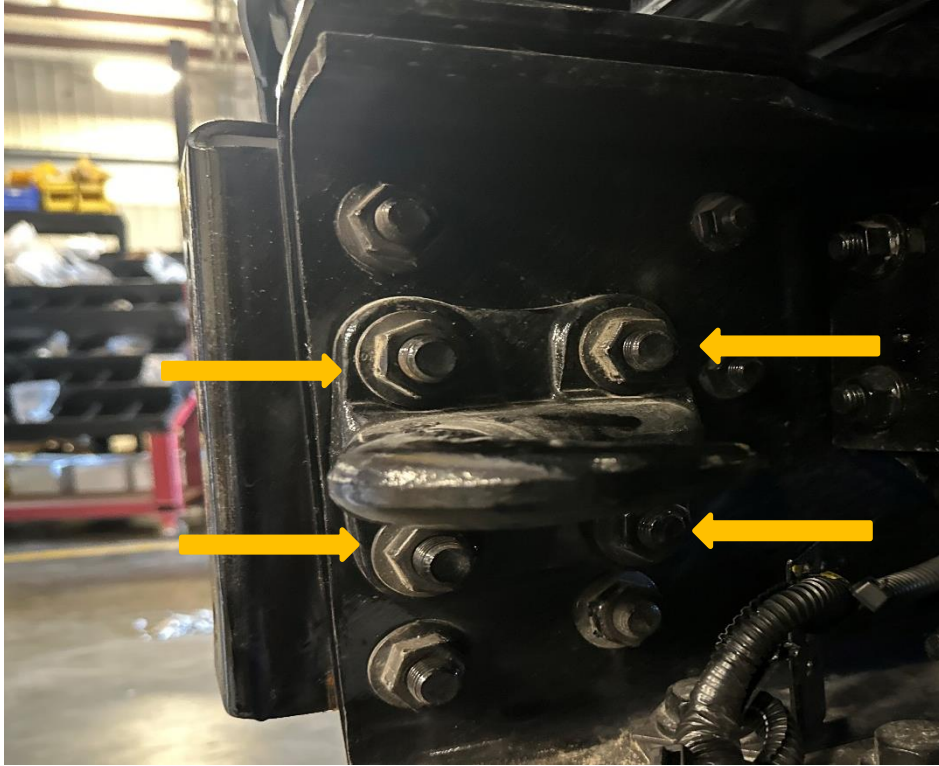
1. Park vehicle on level surface.
2. Engage parking brake and disconnect battery.
3. Using blue masking tape, mask along the profile of your truck above the bumper. This will help protect your truck from any accidental scratches.

## IV. REMOVAL OF OE BUMPER

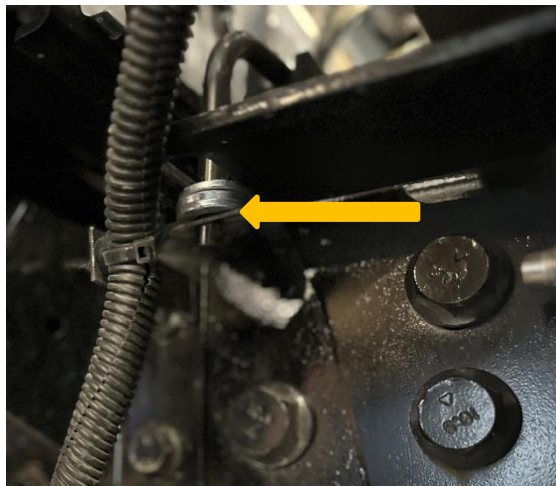
1. Using a T50 Torx bit and an 18mm wrench, remove 4 OE bolts attaching front bumper to OE frame mounts. Remove OE bumper from front of vehicle and set aside.



- Using a 24mm wrench and socket, remove 4 OE bolts attaching the tow hook to the OE bumper mount bracket and set aside. OE hardware will be reused. Repeat for other side.



- Open the hood. **NOTE: ENSURE TENSION ON BOTH HOOD SPRINGS IS RELEASED.**
- Use the needle nosed pliers to release the cotter pin and washers from hood springs and set aside. OE hardware will be reused.

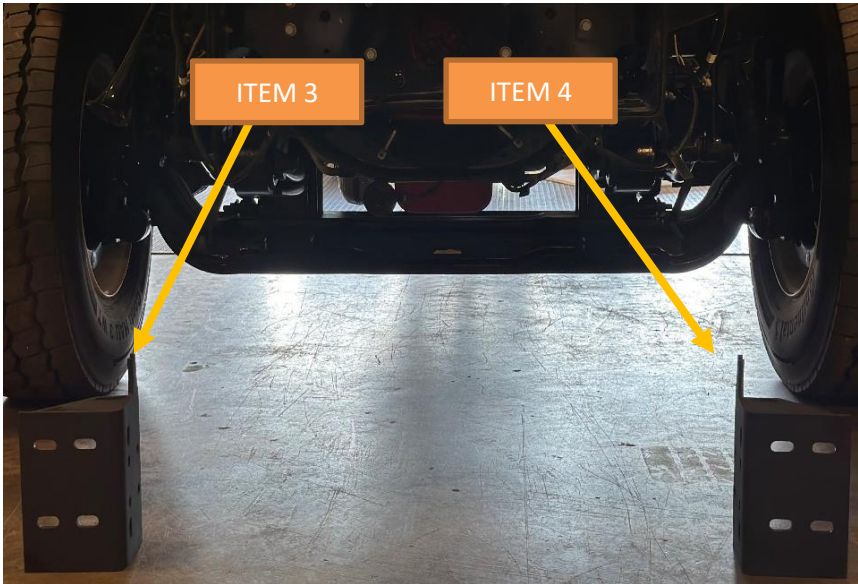


- Using a 24mm wrench and socket, remove the remaining 3 OE bolts of the bumper mount brackets (Both sides). **NOTE: DO NOT CLOSE HOOD OF TRUCK.**

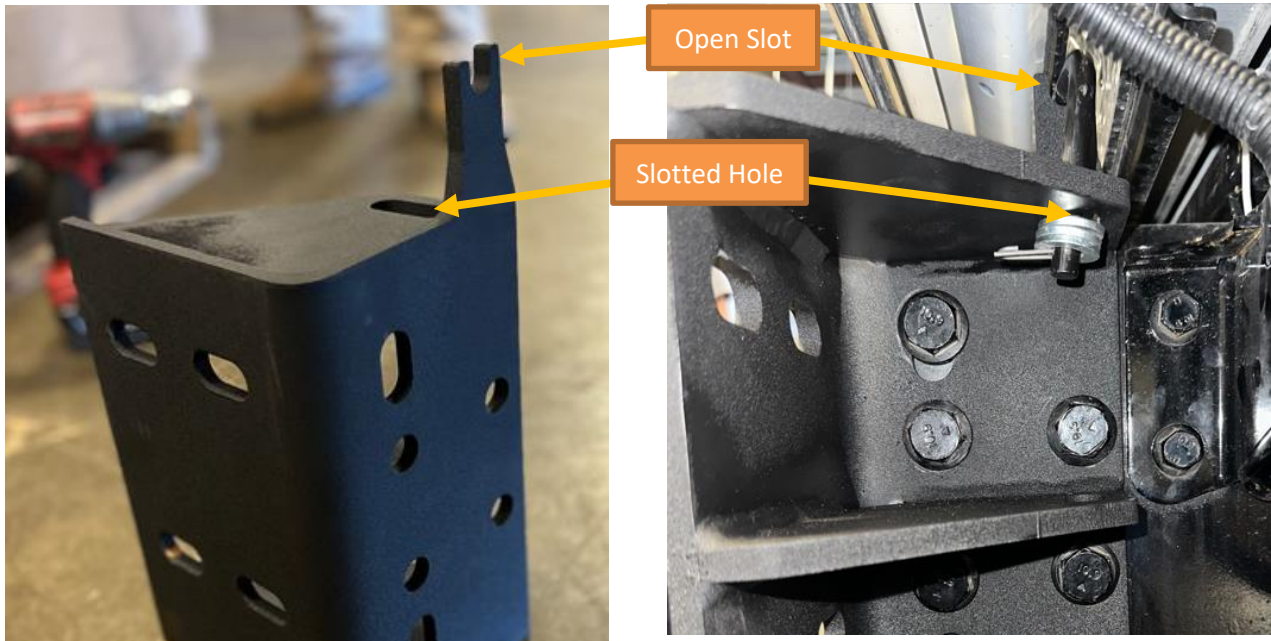


## V. INSTALLATION OF HAMMERHEAD BUMPER

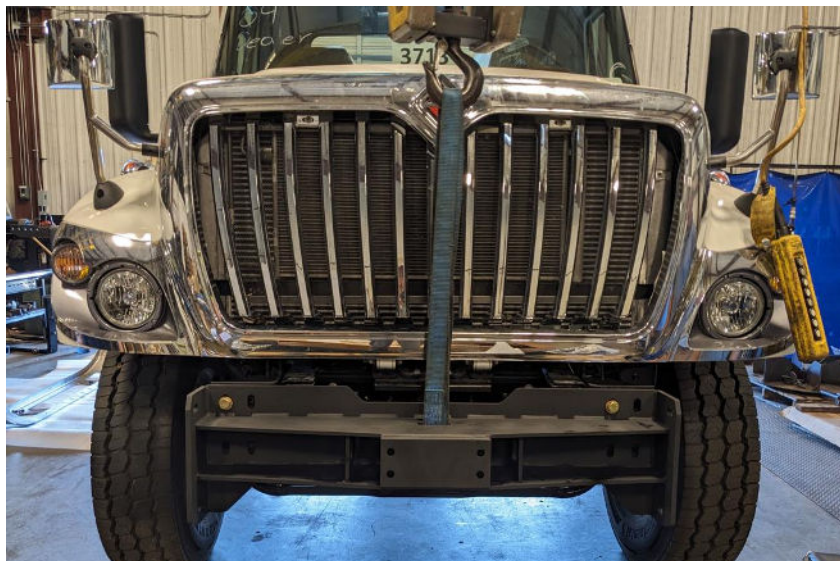
- Layout frame mounts and OE hardware as shown. Attach the frame mounts using OE hardware. Do not fully tighten.



2. Ensure that the hood springs rest in the open slot at the top and then through the slotted hole as shown. Fasten hood springs with 2-3 washers and secure with cotter pin (both sides).



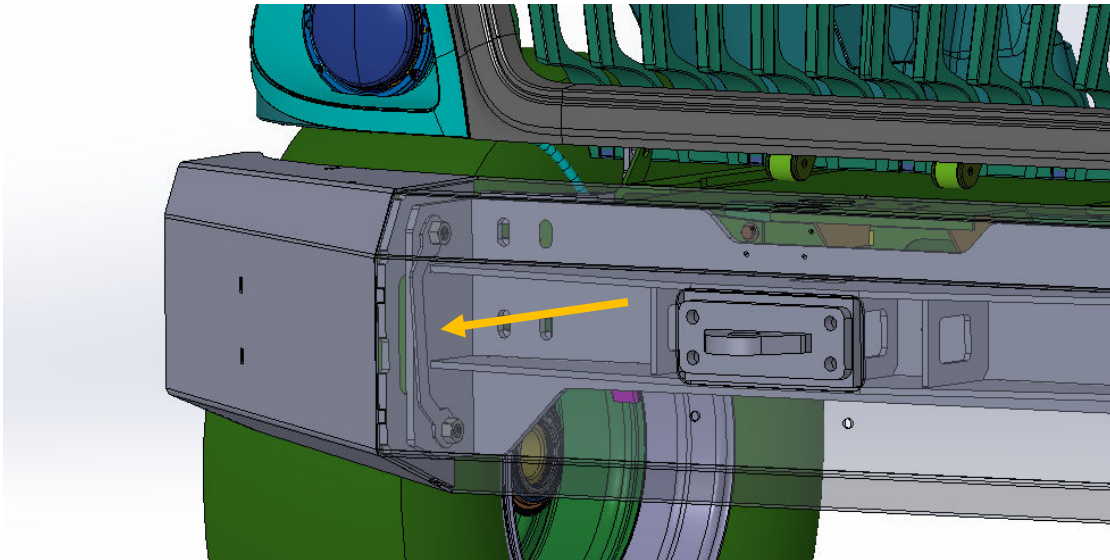
3. Using a level, ensure that the frame mounts are evenly placed. Tighten all bolts once aligned and close the hood.
4. Using a crane or a hoist, loop a strap through the slot in the center tow weldment (*ITEM 2*). Using hardware kit #42, secure the center tow weldment to the frame of the truck with a  $\frac{3}{4}$  socket. Start all bolts before aligning bumper.



5. Once the center tow weldment is aligned and level, tighten all bolts.
6. Install tow hook weldment to the front of the center tow weldment using  $\frac{3}{4}$  bolts.



7. Using a crane or a hoist, attach the bumper to the center tow weldment using hardware kit #42 and the weldnut brackets (*ITEM 6*). (Both sides) Do not fully tighten bolts.



8. Ensure bumper is level and evenly spaced with truck body. Fully tighten all bolts.



**Congratulations! Your product installation is now complete.  
Thank you for your purchase!**