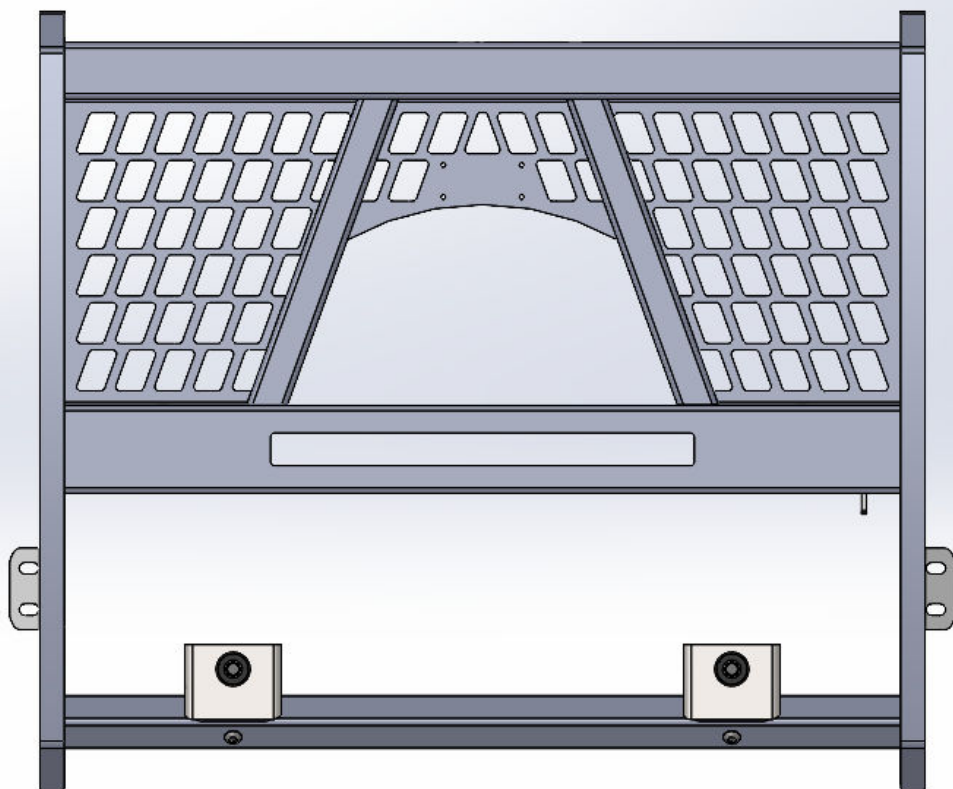




 HammerheadArmor  Hammerheadarmor  HammerheadOff-RoadArmor

GRILLE GUARD FRONT SENSOR KIT

INSTALLATION INSTRUCTIONS



600-56-1200

PLEASE READ BEFORE YOU START

TO ENSURE A QUALITY INSTALLATION READ ALL INSTRUCTIONS AND WARNINGS THOROUGHLY BEFORE BEGINNING ANY WORK. THE INSTRUCTIONS ASSUME A CERTAIN AMOUNT OF MECHANICAL ABILITY AND ARE NOT INTENDED FOR SOMEONE UNFAMILIAR WITH AUTO REPAIR. FAILURE TO FOLLOW THESE INSTRUCTIONS COULD LEAD TO PERSONAL INJURY, DEATH, AND/OR PROPERTY DAMAGE.

SAFETY

READ ALL SAFETY INSTRUCTIONS BEFORE INSTALLATION

If there are any questions, call 1-855-HHTOUGH

PRODUCT INSTALLATION SAFETY

- Follow all instructions for proper assembly.
- Always remove jewelry and wear eye protection.
- Park vehicle on a level surface, engage parking brake, and chock wheels before performing work on vehicle.
- Exercise care when lifting components. Team lift or use crane for items over 50lbs.
- Ensure all fingers and body parts are kept away from pinch points.
- Exercise care when trimming and cutting. Failure in doing so may cause harm or damage.
- Only use the hardware supplied for installation.
- Use appropriate torque for bolts. (Use the wet torque values if you are using Loctite or Anti-Seize, if not use the dry torque values)



Suggested Torque Values for Standard Hex Bolts (ft/lb)				
Bolt Size	Grade 5		Grade 8	
	Dry	Wet	Dry	Wet
1/4-20	8	6.3	12	9
5/16-18	17	13	25	18
3/8-16	30	23	45	35
7/16-14	50	35	70	55
1/2-13	75	55	110	80
9/16-12	110	80	150	110
5/8-11	150	110	220	170
3/4-10	260	200	380	280
7/8-9	863	648	606	303
1-8	1295	971	909	454

Suggested Torque Values for Metric Hex Bolts (ft/lb)				
Bolt Size	Grade 8.8		Grade 10.9	
	Dry	Wet	Dry	Wet
M6	10.4	7.8	15	11.2
M8	25.4	19.1	37.6	27.3
M10	50	38	72	54
M12	88	66	126	94
M14	141	106	201	150
M16	218	164	312	233
M18	301	226	431	323
M20	426	319	609	457
M22	580	435	831	624
M24	736	552	1052	789

PRODUCT USAGE SAFETY

- Do not alter or modify product in any way. Doing so may void warranty or lead to personal injury. (Visit hammerheadarmor.com/support/policies/ for warranty details)
- Re-torque hardware at each oil change.
- In the event of a collision, inspect product and mounts for damage before usage.
- After vehicle recovery or winching, inspect mounts and hardware.
- For proper winch usage refer to the winch manufacturer's guidelines.

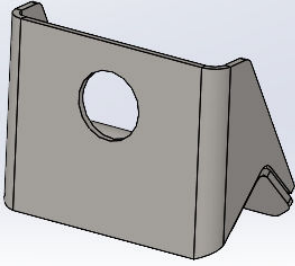
California Proposition

 **65 Warning** 

WARNING: This product contains chemicals known to the state of California to cause cancer and birth defects or other reproductive harm.

For more information visit: www.P65warnings.ca.gov

I. PARTS LIST

ITEM 1	PARKING SENSOR BRACKET	QTY. 2	ITEM 2	INSTALL KIT - 363	QTY. x
			✓ INSTALL KIT #0359 (RUBBER GROMMET) x2 (RUBBER BUMPER) x2 (SENSOR CLIP) x2 (SENSOR EXT. HARNESS) x2	✓ HARDWARE KIT #262 (60K-56-0262) x1	

REMOVE CONTENTS FROM BOX AND VERIFY ALL PARTS ARE PRESENT.

If there are any questions, call 1-855 HHTOUGH or email HHORDERS@hammerheadarmor.com

II. TOOL LIST

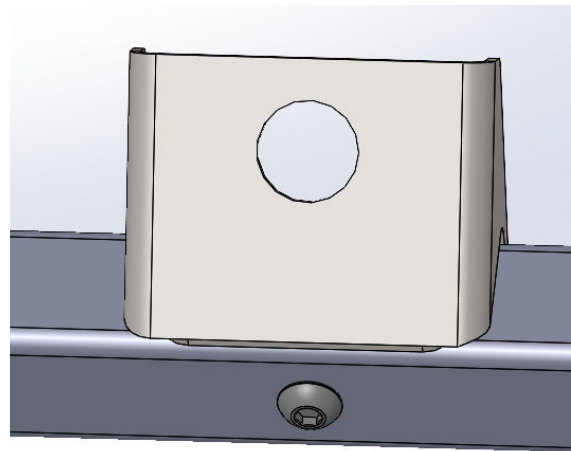
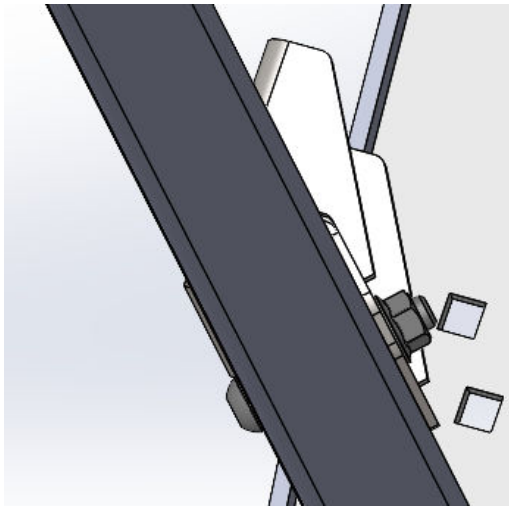
- ✓ A crane or a helper
- ✓ Basic tool set – including allens and metric sockets
- ✓ Blue masking tape
- ✓ Trim tool

III. VEHICLE PREPARATION

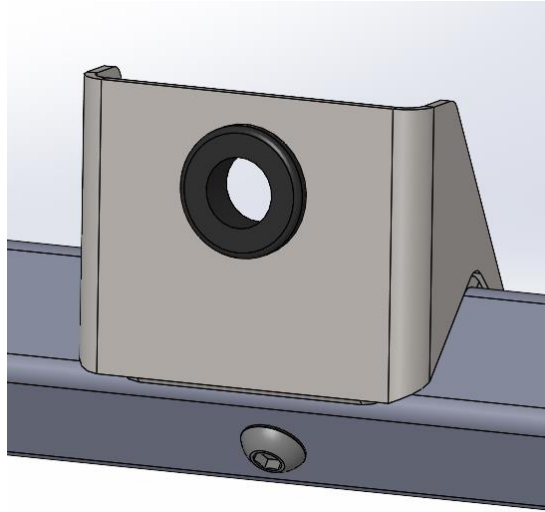
1. Park vehicle on level surface.
2. Engage parking brake, disconnect battery, and chock the wheels.
3. Using blue masking tape, mask along the profile of your vehicle above the bumper. This will help protect your vehicle from any accidental scratches.

IV. INSTALLATION OF BRACKETS AND SENSORS

1. Go behind the bumper and located the two front sensors. Gently pry the tabs on either side out some to pull the sensor out the back towards the vehicle. Repeat for the 2nd sensor.
NOTE: TAKE NOTE OF HOW THE SENSOR PLUG IT LOCATED. THE SENSOR HAS A SET WAY TO ROTATE TO WORK PROPERLY.
2. Once the sensors are, out you can push the clip out the front of the bumper. It will not be re-used. Repeat for the 2nd sensor.
3. Un-plug the sensor and plug in the sensor ext. harness. Feed the ext. harness through the bumper. Repeat for the 2nd sensor.
4. Now install the parking sensor bracket on the grille guard using the M12 bolt and flange nut. Repeat for other side.

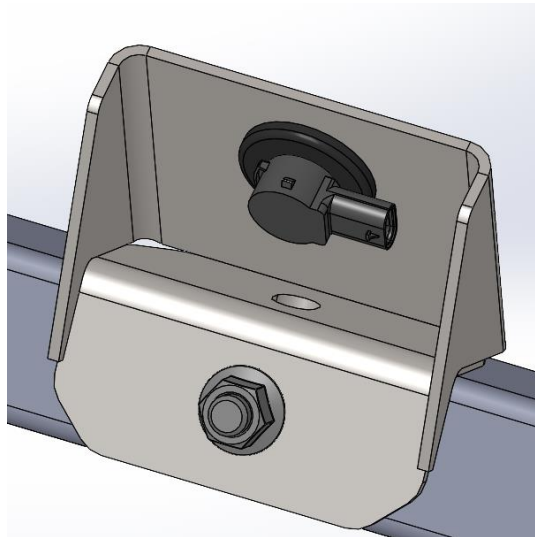


5. Insert the rubber grommet in the hole and make sure it is fully seated. Repeat for other side.

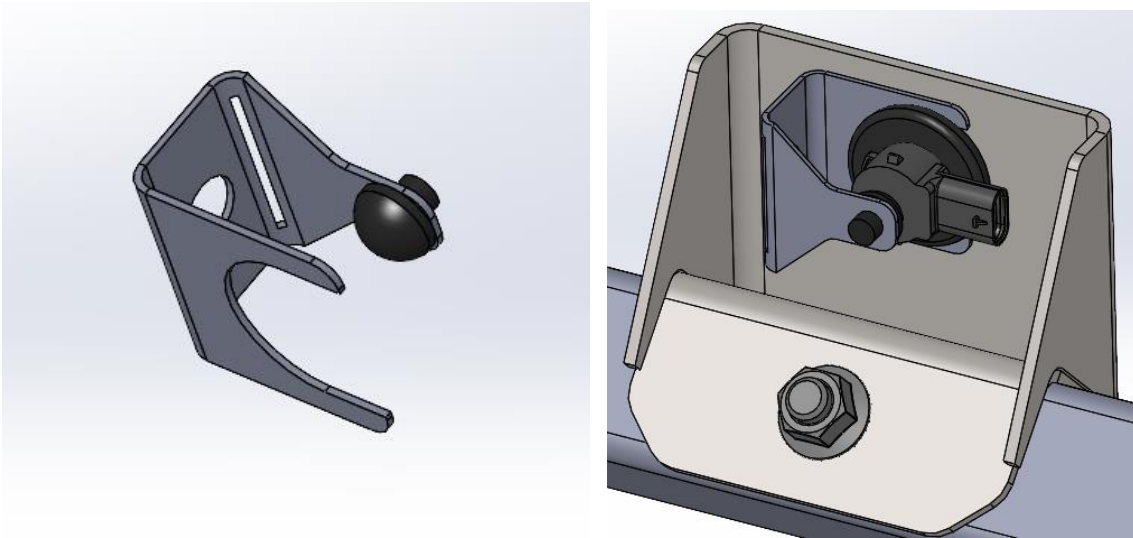


6. Next plug the sensor into the sensor ext. harness. Using a small amount of soap push the sensor into the grommet. Make sure to insert the sensor in the same clocked rotate it was installed in the bumper. Repeat for other sensor.

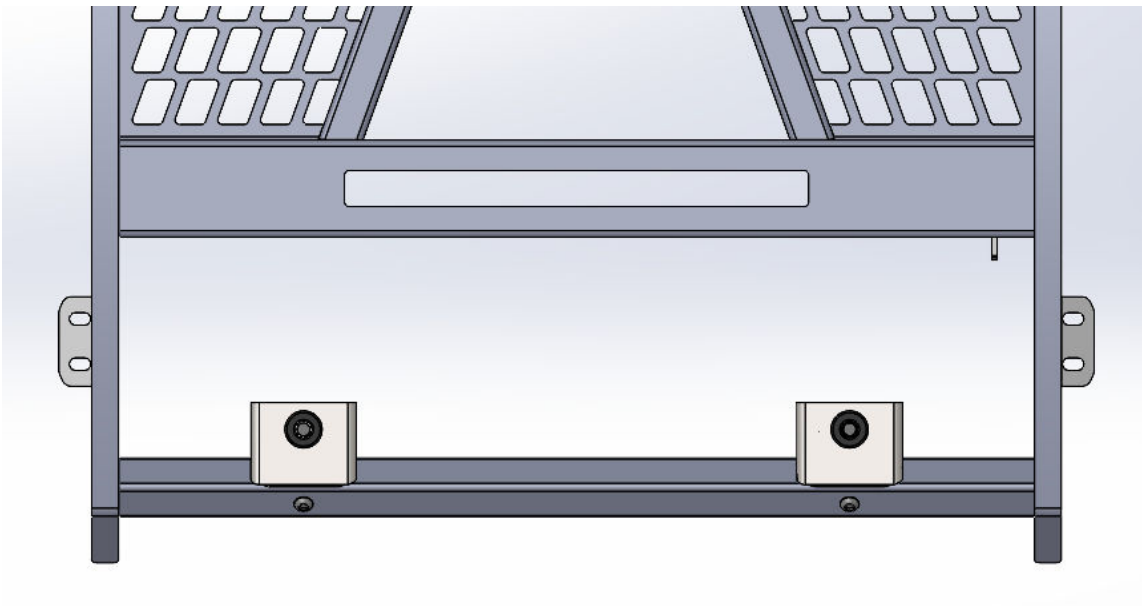
NOTE: THE SENSOR PLUG IS TYPICALLY PARRALLEL TO THE GROUND. SOME MAY DIFFER DEPENDING ON MANUFACTORS.



7. Take the Sensor clips and Rubber bumper and install them. The sensor clip with go between the bracket and the rubber grommet. The sensor clip may need to bend down to insure the rubber bumper is touching the back of the sensor. Repeat on the 2nd sensor.



8. After install both sensor clips feed the extra sensor ext. harness back through and tie up. Now reconnet the vehicle battery.



**Congratulations! Your product installation is now complete.
Thank you for your purchase!**