

2011-2014, GMC, 2500-3500

FRONT BUMPER INSTALLATION INSTRUCTIONS



SAFETY

Know safety, no injury. Know injury, no safety. ~Author Unknown

If there are any questions, call 1-855-HHTOUGH

- **READ ALL SAFETY INSTRUCTIONS BEFORE INSTALLATION**
 - FOLLOW ALL INSTRUCTIONS FOR PROPER ASSEMBLY
 - WEAR APPROPRIATE EYE PROTECTION
 - EXERCISE CARE WHEN LIFTING COMPONENTS
 - USE APPROPRIATE TORQUE FOR BOLTS

SUGGESTED TORQUE VALUES FOR STEEL GRADE SAE 5 BOLTS

BOLT DIAMETER (INCH)	TREADS PER INCH	TORQUE (POUND-FEET)
1/4	20	7
5/16	18	14
3/8	16	25
7/16	14	40
1/2	13	60
9/16	12	88
5/8	11	120
3/4	10	200
7/8	9	302
1	8	466



2011-2014, GMC, 2500-3500

I. PARTS LIST

<u>QTY</u>	<u>PART NUMBER</u>	<u>DESCRIPTION</u>	<u>CHECKOFF</u>
1	600-56-0105, 0164, 0357	FRONT BUMPER	
1	601-56-1438	PASS FRAME MOUNT WELDMENT	
1	601-56-1439	DRIVER FRAME MOUNT WELDMENT	
1	60K-56-0001	HARDWARE KIT #1	

II. TOOL LIST

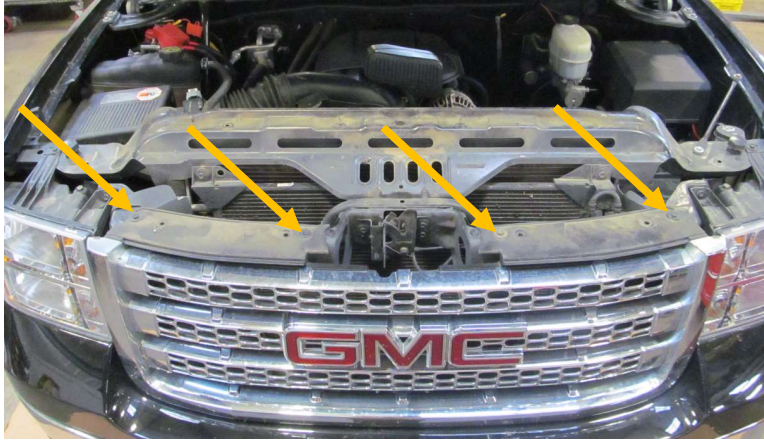
1. Basic tool set
2. 3/4" wrench
3. 3/4" socket
4. Body trim tool or flat head screwdriver
5. 10mm socket
6. 7mm socket
7. T15 Torx
8. 21mm socket
9. 18mm deep well socket
10. 18mm wrench
11. 7/16" socket
12. 7/16" wrench

III. REMOVAL OF OEM BUMPER

1. Open hood. Using body trim tool or flat head screwdriver, remove ten clips from shroud. Remove shroud and set aside.



2. Using 10mm socket, remove four bolts attaching grill to truck.



3. Using 7mm socket, remove two screws attaching plastic fascia to fender. (both sides)



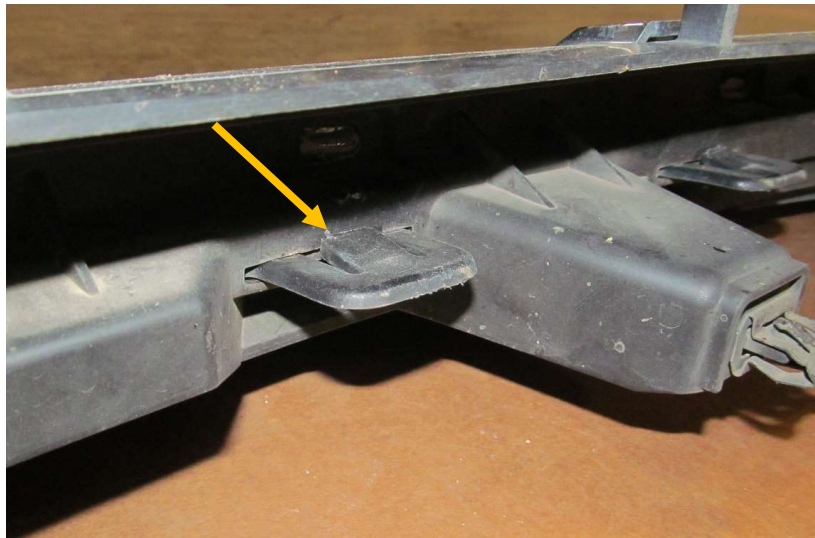
4. Using your hands, pull out on side of plastic fascia to disengage tabs from fender. (both sides)



5. Remove grill and fascia as an assembly.



6. Disengage tabs that attach grill to fascia. Set fascia aside; it will not be reused.

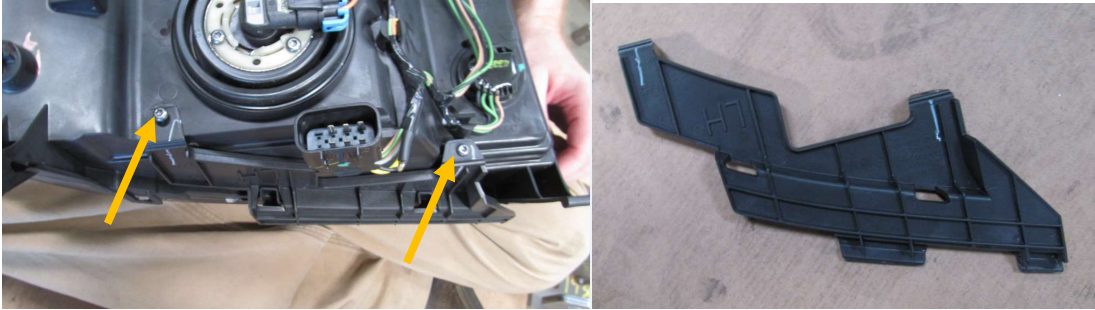


7. Using a 10mm socket, remove three bolts attaching fascia support to fender. Set aside; it will not be reused. (both sides)

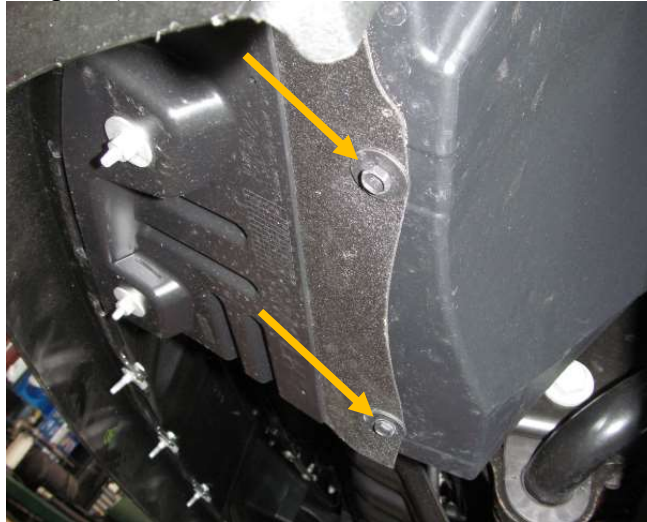


2011-2014, GMC, 2500-3500

8. Using T15 Torx bit, remove two screws attaching plastic fascia clip to bottom of headlight. Note: Headlight shown removed for clarity. Set aside; it will not be reused. (both sides)



9. Unplug fog lights if applicable.
10. Using 10mm socket, remove two bolts attaching lower fender to bumper. (both sides)



11. Using 15mm socket, remove three bolts from lower side bumper support. Set aside; it will not be reused. (both sides)

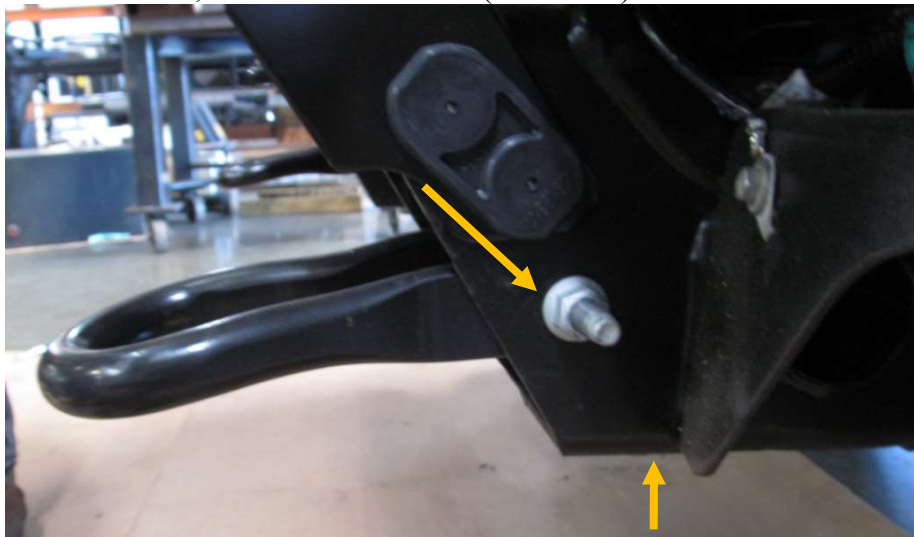




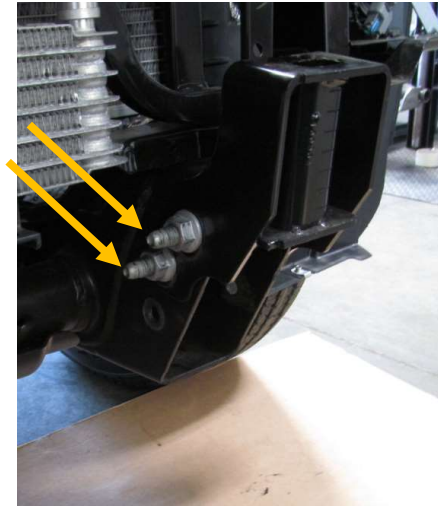
12. Using 21mm socket, remove two bolts attaching bumper to truck. They are accessible from the top behind the bumper. Remove bumper and set aside.



13. Use 18mm deep well socket and wrench to remove tow hook. Set aside; it will not be reused. (both sides)



14. Using 18mm deep well socket, remove nuts on bolt strip. Remove strip and bumper mount. Set mount aside; it will not be reused. (both sides)



IV. INSTALLATION OF HAMMERHEAD BUMPER

1. Layout bolt strips and Hammerhead frame mounts as shown.



2. Install Hammerhead frame mounts on frame as shown using bolt strips. Do not fully tighten.





2011-2014, GMC, 2500-3500

3. Using a hoist or a few friends, attach bumper to frame mounts using hardware kit #1. Each side will use three ½”-13 x 2” bolts, six flat washers, three lock washers, and three ½”-13 nuts. Start all bolts before aligning bumper. Align bumper a minimum of ¼” below headlights. When truck flexes off-road, this distance allows your bumper and body to have clearance. Tighten bolts with ¾” socket and wrench. Tighten frame mount bolts at this time.
4. Trim inner fenders to match bumper.

Congratulations! Your product installation is now complete.
Thank you for your purchase.