

2007-20XX CHEVY/GMC 2500/3500 REGULAR CAB - CAB LENGTH

RUNNING BOARD INSTALLATION INSTRUCTIONS



SAFETY

Know safety, no injury. Know injury, no safety. ~Author Unknown

If there are any questions, call 1-855-HHTOUGH

- **READ ALL SAFETY INSTRUCTIONS BEFORE INSTALLATION**
 - FOLLOW ALL INSTRUCTIONS FOR PROPER ASSEMBLY
 - WEAR APPROPRIATE EYE PROTECTION
 - EXERCISE CARE WHEN LIFTING COMPONENTS
 - USE APPROPRIATE TORQUE FOR BOLTS
 - BLUE THREAD LOCKING COMPOUND IS RECOMMENDED ON ALL BOLTS
 - SUGGESTED TORQUE VALUES FOR STEEL GRADE SAE 5 BOLTS

BOLT DIAMETER (INCH)	TREADS PER INCH	TORQUE (POUND-FEET)
1/4	20	7
5/16	18	14
3/8	16	25
7/16	14	40
1/2	13	60
9/16	12	88
5/8	11	120
3/4	10	200
7/8	9	302
1	8	466



2007-20XX Chevy 2500/3500 Regular Cab

I. PARTS LIST

<u>QUANTITY</u>	<u>PART NUMBER</u>	<u>DESCRIPTION</u>
1	60P-56-0345	RIGHT SIDE RUNNING BOARDS
1	60P-56-0346	LEFT SIDE RUNNING BOARDS

II. TOOL LIST

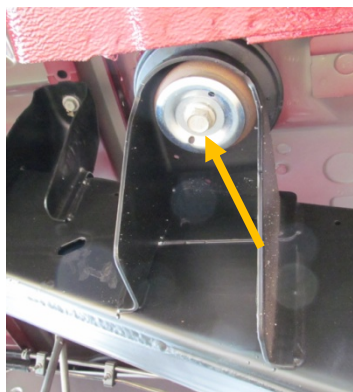
1. A good friend
2. Basic tool kit
3. 21mm socket

III. VEHICLE PREPARATION

1. Using 21mm socket, remove two cab bolts on left side of truck.



Front



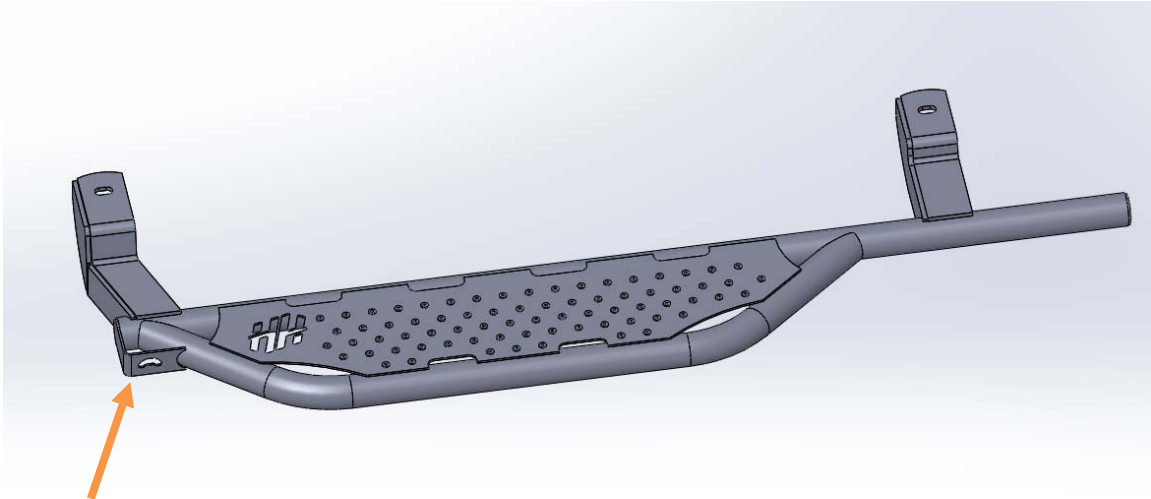
Rear



2007-20XX Chevy 2500/3500 Regular Cab

IV. RUNNING BOARD INSTALLATION

1. Identify the left running board. It will have a bottle opener (arrow) on the left side.



2. Have a good friend help you hold the running board up to the mounts.
3. Replace and tighten all OEM hardware. Installation is now complete. Follow the same procedure for the right side of the vehicle.

Congratulations! Your product installation is now complete.
Thank you for your purchase.