

1992-1998 FORD F150-450 REGULAR CAB

RUNNING BOARD INSTALLATION INSTRUCTIONS



SAFETY

Know safety, no injury. Know injury, no safety. ~Author Unknown

If there are any questions, call 1-855-HHTOUGH

- **READ ALL SAFETY INSTRUCTIONS BEFORE INSTALLATION**
 - FOLLOW ALL INSTRUCTIONS FOR PROPER ASSEMBLY
 - WEAR APPROPRIATE EYE PROTECTION
 - EXERCISE CARE WHEN LIFTING COMPONENTS
 - USE APPROPRIATE TORQUE FOR BOLTS
 - BLUE THREAD LOCKING COMPOUND IS RECOMMENDED ON ALL BOLTS
 - SUGGESTED TORQUE VALUES FOR STEEL GRADE SAE 5 BOLTS

BOLT DIAMETER (INCH)	TREADS PER INCH	TORQUE (POUND-FEET)
1/4	20	7
5/16	18	14
3/8	16	25
7/16	14	40
1/2	13	60
9/16	12	88
5/8	11	120
3/4	10	200
7/8	9	302
1	8	466



1992-1998 Ford F-150-450 Regular cab

I. PARTS LIST

<u>QUANTITY</u>	<u>PART NUMBER</u>	<u>DESCRIPTION</u>
1	60P-56-0386	RIGHT SIDE RUNNING BOARDS
1	60P-56-0387	LEFT SIDE RUNNING BOARDS
4	601-56-2912	TOP PLATE
1	60K-56-0054	HARDWARE KIT # 54

II. TOOL LIST

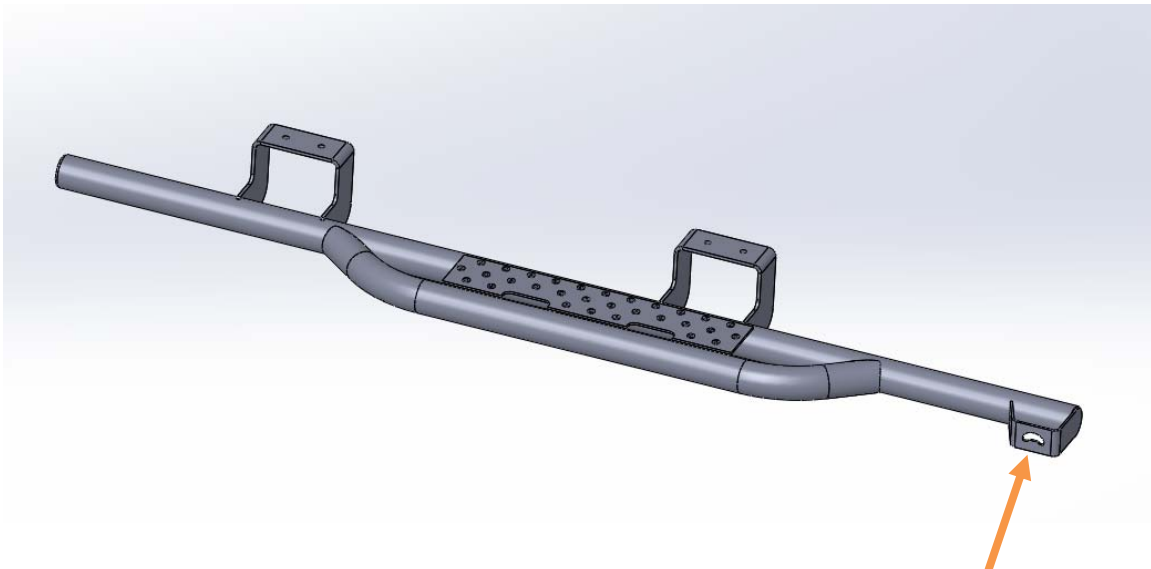
1. A good friend
2. Basic tool kit
3. Clamps
4. Permanent marker
5. Center punch
6. Hammer
7. 11/32" drill bit
8. Drill
9. 1/2" socket

III. VEHICLE PREPARATION

1. Clean truck body under door.

IV. RUNNING BOARD INSTALLATION

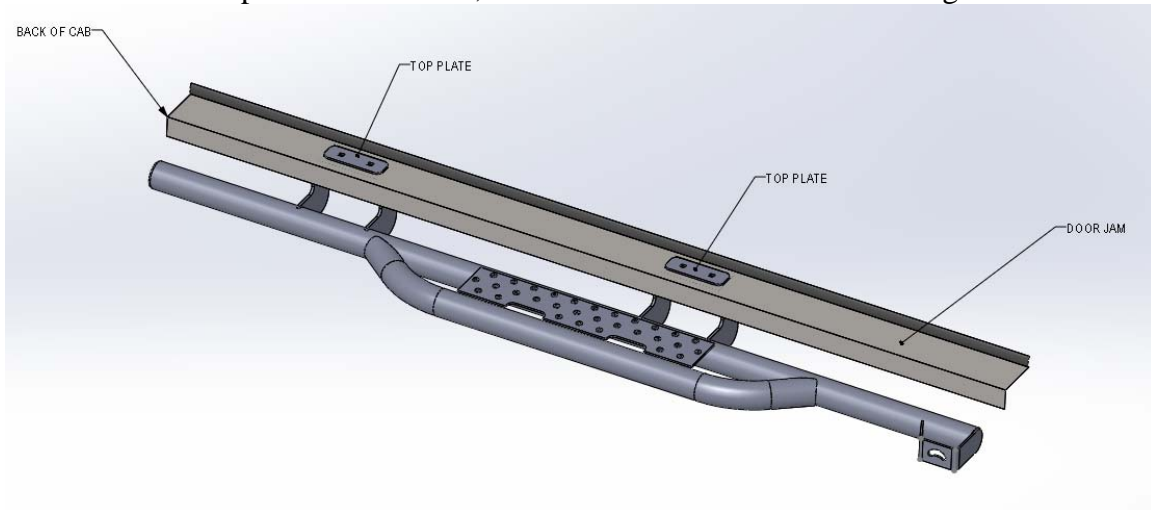
1. Identify the right running board. It will have a bottle opener (arrow) on the right side.



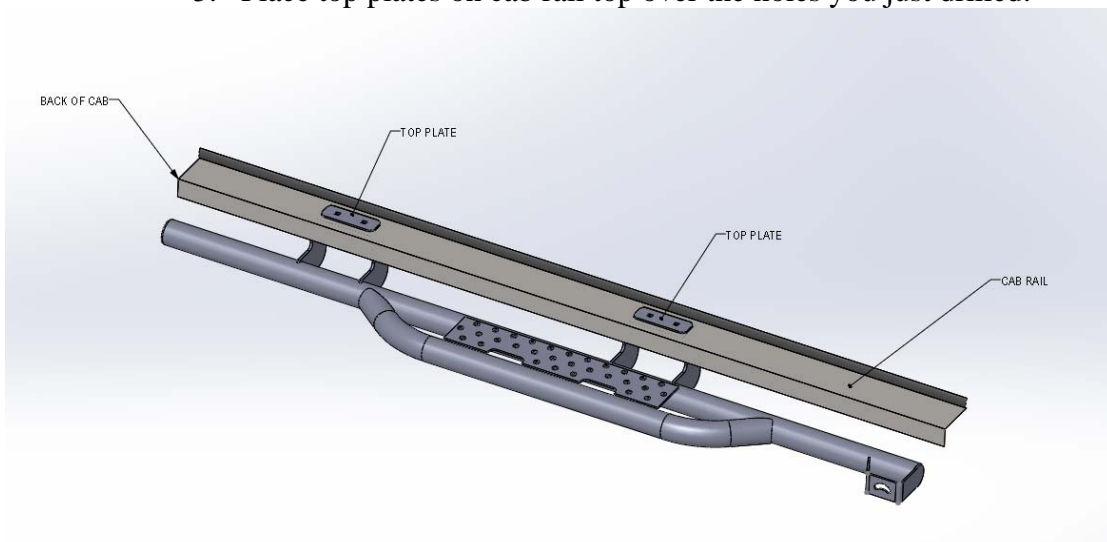


1992-1998 Ford F-150-450 Regular cab

2. Open right side door. Have a good friend help you hold the running board up to the bottom of the door jam. Flush the back of the running board with the back of the cab. Make sure running board rail is parallel with the side of truck. Clamp running board to truck door jam. Using permanent marker, mark four holes and remove running board.



3. Center punch and drill four holes with 11/32" drill bit.
4. Clamp running board back to door jam.
5. Place top plates on cab rail top over the holes you just drilled.



6. In this step you will use hardware from kit #54. Using four 5/16"-18 x 1.5" carriage head bolts, four 5/16" flat washers, four 5/16" lock washers, and four 5/16"-18 nuts, attach running board to cab rail. NOTE: Insert bolts from top. Use 1/2" socket to tighten bolts.
7. Installation is now complete. Follow the same procedure for the left side of the vehicle.