

2014-20XX TOYOTA TUNDRA

FRONT BUMPER INSTALLATION INSTRUCTIONS



SAFETY

Know safety, no injury. Know injury, no safety. ~Author Unknown

- **READ ALL SAFETY INSTRUCTIONS BEFORE INSTALLATION**

- FOLLOW ALL INSTRUCTIONS FOR PROPER ASSEMBLY
- WEAR APPROPRIATE EYE PROTECTION
- EXERCISE CARE WHEN LIFTING COMPONENTS
- USE APPROPRIATE TORQUE FOR BOLTS
- BLUE THREAD LOCKING COMPOUND IS RECOMMENDED ON ALL BOLTS

- SUGGESTED TORQUE VALUES FOR STEEL GRADE SAE 5 BOLTS

BOLT DIAMETER (INCH)	TREADS PER INCH	TORQUE (POUND-FEET)
1/4	20	7
5/16	18	14
3/8	16	25
7/16	14	40
1/2	13	60
9/16	12	88
5/8	11	120
3/4	10	200
7/8	9	302
1	8	466



2014-20XX Toyota Tundra

I. PARTS LIST

<u>QUANTITY</u>	<u>PART NUMBER</u>	<u>DESCRIPTION</u>
1	600-56-0432	FRONT BUMPER
1	601-56-3168	LEFT FRAME MOUNT
1	60P-56-3169	RIGHT FRAME MOUNT
1	60K-56-0058	HARDWARE KIT #58
1	60K-56-0057	HARDWARE KIT #57
2	601-56-2868	WELDNUT TAB 3
1	601-56-2958	RIGHT BAR MOUNT
1	601-56-2959	LEFT BAR MOUNT

II. TOOL LIST

1. 17mm socket
2. 14mm socket
3. 10mm socket
4. Flathead screwdriver
5. 3/4" wrench
6. 3/4" socket

III. REMOVAL OF OEM BUMPER

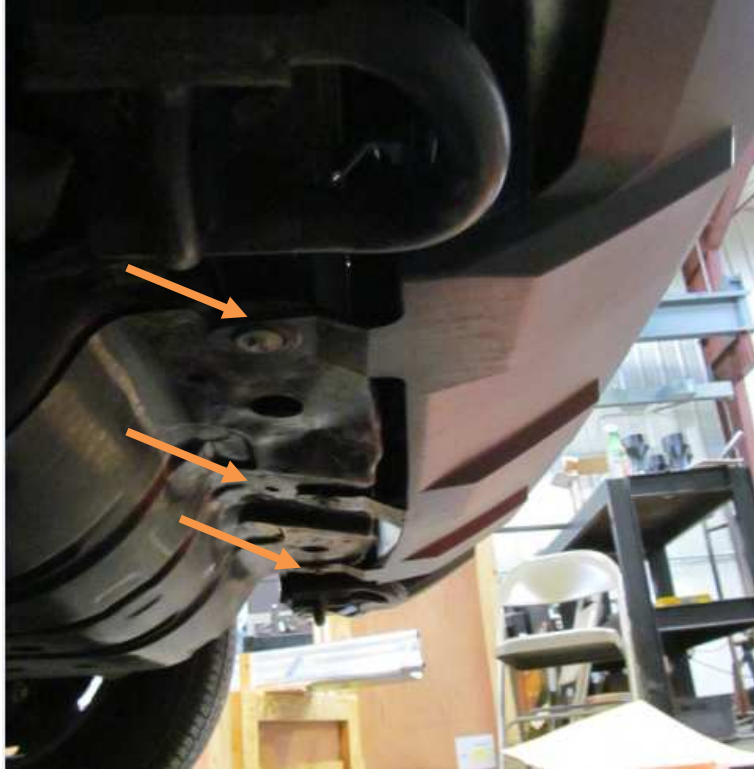
1. Remove clip (both sides)





2014-20XX Toyota Tundra

2. Using 10mm socket, remove three bolts from skidplate



3. Using 17mm socket, Remove two bolts holding on OEM tow hooks. (both sides)





2014-20XX Toyota Tundra

- Using 14mm socket, Remove four nuts holding on OEM bumper. (both sides) Be careful, the bumper will be ready to come off after these nuts are removed.



- Pull bumper forward off of studs and move down so inner fenders will clear frame.

IV. INSTALLATION OF HAMMERHEAD BUMPER

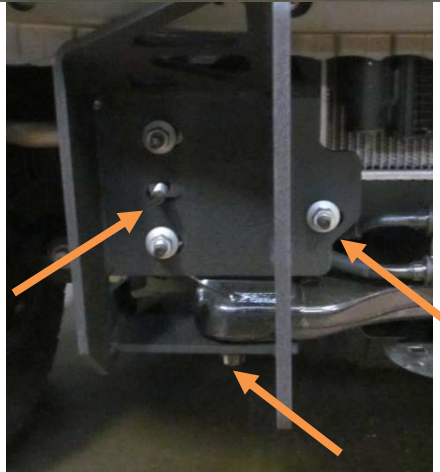
- Layout frame mounts as shown.



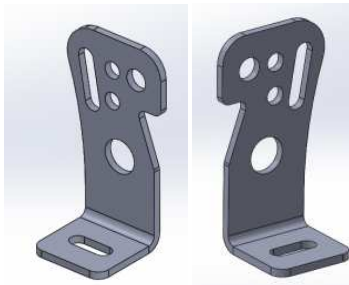


2014-20XX Toyota Tundra

- Using OEM hardware (4 nuts on face and 2 bolts underneath for each frame mount), bolt Hammerhead frame mounts to OEM bumper mounts. Place in center of slots. Do not fully tighten.



- Install all lights in Hammerhead bumper at this time. Use included Bar mount brackets (601-56-2958 and 2959) and Hardware kit #57 to attach 20" bar in bumper to mount in bumper. Use hole in bracket and bumper that works best with your light bar. Tighten bolts from hardware kit #57 with 7/16" socket and wrench.



2958 and 2959 brackets



2014-20XX Toyota Tundra

4. Install Hammerhead bumper using Hardware Kit # 58, Weldnut Tabs and 3/4" socket and wrench.
5. Align bumper and fully tighten all hardware.



Congratulations! Your bumper installation is now complete.
Thank you for your purchase.