

1999-2016 FORD F250-550 REGULAR CAB - CAB LENGTH RUNNING BOARD INSTALLATION INSTRUCTIONS



SAFETY

Know safety, no injury. Know injury, no safety. ~Author Unknown

If there are any questions, call 1-855-HHTOUGH

- **READ ALL SAFETY INSTRUCTIONS BEFORE INSTALLATION**
 - FOLLOW ALL INSTRUCTIONS FOR PROPER ASSEMBLY
 - WEAR APPROPRIATE EYE PROTECTION
 - EXERCISE CARE WHEN LIFTING COMPONENTS
 - USE APPROPRIATE TORQUE FOR BOLTS
 - BLUE THREAD LOCKING COMPOUND IS RECOMMENDED ON ALL BOLTS
 - SUGGESTED TORQUE VALUES FOR STEEL GRADE SAE 5 BOLTS

BOLT DIAMETER (INCH)	TREADS PER INCH	TORQUE (POUND-FEET)
1/4	20	7
5/16	18	14
3/8	16	25
7/16	14	40
1/2	13	60
9/16	12	88
5/8	11	120
3/4	10	200
7/8	9	302
1	8	466



1999-2016 FORD F250-550 REG CAB

I. PARTS LIST

<u>QUANTITY</u>	<u>PART NUMBER</u>	<u>DESCRIPTION</u>
1	60P-56-0655	RIGHT RUNNING BOARD
1	60P-56-0656	LEFT RUNNING BOARD
1	60K-56-0086	HARDWARE KIT #86

II. TOOL LIST

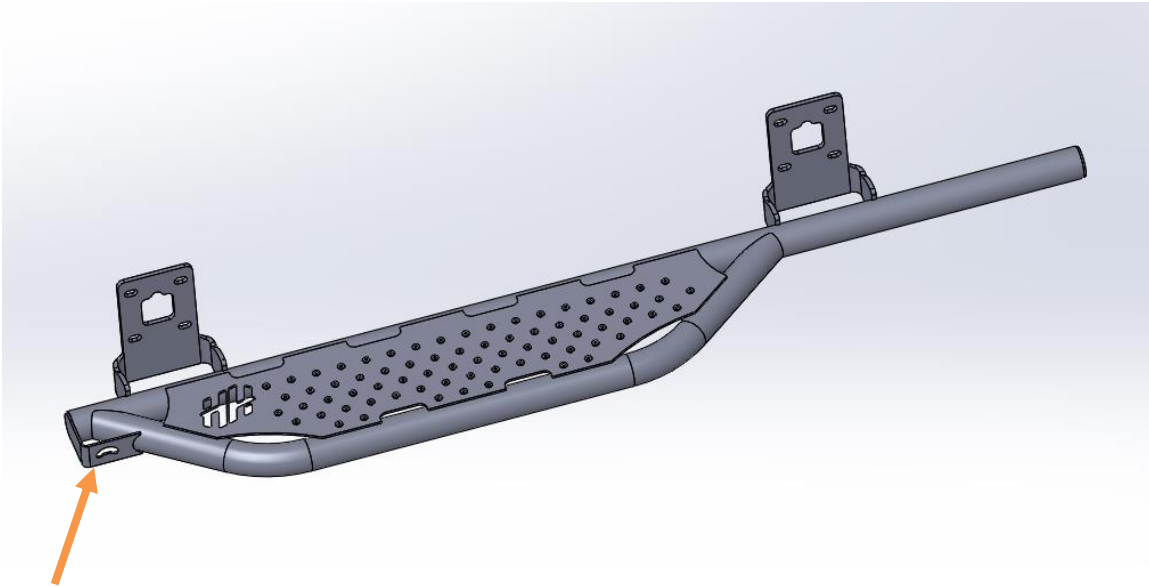
1. A good friend
2. Basic tool kit
3. ½" socket

III. VEHICLE PREPARATION

1. In this step you will use hardware from kit #86. Install three spring nuts in cab at each running board mount location. (front mount, rear mount)

IV. RUNNING BOARD INSTALLATION

1. Identify the left running board. It will have a bottle opener (arrow) on the left side.



(Picture is for reference only; your running boards may differ.)

2. Have a good friend help you hold the running board up to the mounts.
3. In this step you will use hardware from kit #86. Using six 5/16"-18x1.5" bolts, six 5/16" lock washers and six 5/16" flat washers, install running boards on vehicle. Tighten with ½" socket. Installation is now complete. Follow the same procedure for the right side of the vehicle.

Congratulations! Your product installation is now complete.
Thank you for your purchase.