

2003-2012 CHEVY COLORADO

REAR BUMPER INSTALLATION INSTRUCTIONS



SAFETY

Know safety, no injury. Know injury, no safety. ~Author Unknown

If there are any questions, call 1-855-HHTOUGH

- **READ ALL SAFETY INSTRUCTIONS BEFORE INSTALLATION**

- FOLLOW ALL INSTRUCTIONS FOR PROPER ASSEMBLY
- WEAR APPROPRIATE EYE PROTECTION
- EXERCISE CARE WHEN LIFTING COMPONENTS
- USE APPROPRIATE TORQUE FOR BOLTS
- BLUE THREAD LOCKING COMPOUND IS RECOMMENDED ON ALL BOLTS

- SUGGESTED TORQUE VALUES FOR STEEL GRADE SAE 5 BOLTS

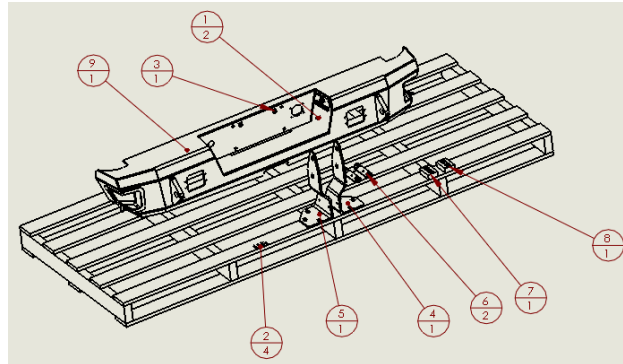
BOLT DIAMETER (INCH)	TREADS PER INCH	TORQUE (POUND-FEET)
1/4	20	7
5/16	18	14
3/8	16	25
7/16	14	40
1/2	13	60
9/16	12	88
5/8	11	120
3/4	10	200
7/8	9	302
1	8	466



2003-2012 CHEVY COLORADO FRONT

I. PARTS LIST

ITEM NO.	QTY	PART NUMBER	DESCRIPTION
1	2	307-07-0008	12V COOL WHITE LED 120DEG BLK
2	4	307-09-0135	BUTT SPLICE 22/16 RED, HEATSINK
3	1	443-01-0086	LICENSE PLATE MOUNTING KIT
4	1	601-56-4128	RIGHT FRAME MOUNT
5	1	601-56-4129	LEFT FRAME MOUNT
6	2	601-56-4185	WELD NUT TAB 6
7	1	60K-5-6-0132	HARD WARE KIT #132
8	1	60K-5-6-0135	HARD WARE KIT #135
9	1	60P-5-6-0682	600-5-6-0682 POLISHED



II. TOOL LIST

1. A basic tool kit
2. A good friend
3. 10mm socket
4. 18mm socket
5. 21mm socket
6. 3/4" socket
7. 3/4" wrench

III. REMOVAL OF OEM BUMPER

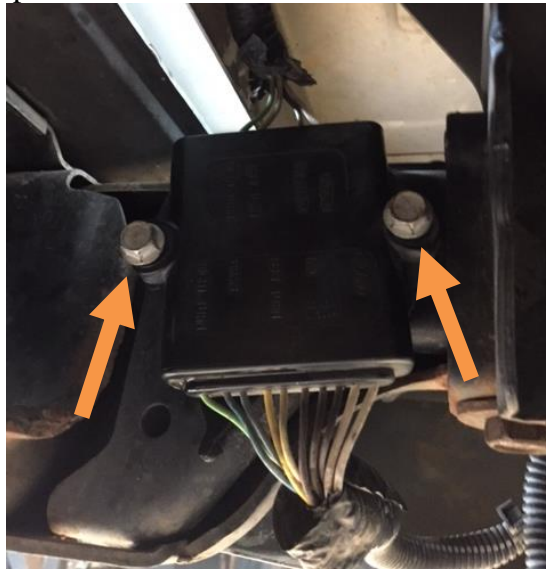
1. Unplug the OE wiring harnesses



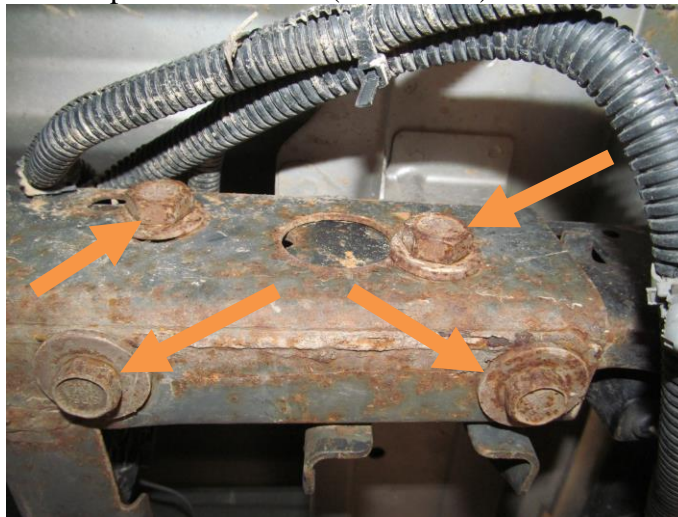


2003-2012 CHEVY COLORADO FRONT

2. Using a 10mm socket, remove the electrical module from the left OE bumper mount.



3. Using an 18mm socket and a 21mm socket, remove the 4 bolts holding the bumper to the frame. (Both Sides)



4. Remove the OE bumper and set aside out of the way.



2003-2012 CHEVY COLORADO FRONT

IV.

INSTALLATION OF HAMMERHEAD BUMPER

1. Install License plate lights, License plate mounting kit, and trailer connection (if applicable) in Hammerhead rear bumper.
2. Install the flush mount lights at this time.
3. Layout frame mounts, bolt strips, and hardware from Hardware Kit #135 as shown:



4. Install Hammerhead frame mounts (601-56-4128 and 4129). Slide the bolt strip inside the frame and thread the bolts through the frame mount and the frame and into the bolt strip.

The bumper's forward and backward adjustment will be done with these mounts.





2003-2012 CHEVY COLORADO FRONT

5. Using 6 carriage head bolts and 6 push nuts from Hardware kit #132, install bolts and push nuts in the slots in the bumper.



6. Have a friend help you pick up the bumper and install it on the truck. Hand-tighten the nuts onto the bolts. Align the bumper horizontally and vertically and tighten using $\frac{3}{4}$ " socket. Note: Open tailgate slowly to ensure minimum of $\frac{3}{8}$ " clearance below tailgate and minimum of $\frac{3}{8}$ " clearance from truck body.
7. Plug in wiring harnesses for license plate lights and trailer connection and reconnect the electrical module.



Congratulations! Your installation is now complete.
Thank you for your purchase.