

2007-2013 Chevy/GMC 1500 EXTENDED CAB CAB LENGTH

RUNNING BOARD INSTALLATION INSTRUCTIONS



SAFETY

Know safety, no injury. Know injury, no safety. ~Author Unknown

- **READ ALL SAFETY INSTRUCTIONS BEFORE INSTALLATION**
 - FOLLOW ALL INSTRUCTIONS FOR PROPER ASSEMBLY
 - WEAR APPROPRIATE EYE PROTECTION
 - EXERCISE CARE WHEN LIFTING COMPONENTS
 - USE APPROPRIATE TORQUE FOR BOLTS
 - BLUE THREAD LOCKING COMPOUND IS RECOMMENDED ON ALL BOLTS
 - SUGGESTED TORQUE VALUES FOR STEEL GRADE SAE 5 BOLTS

BOLT DIAMETER (INCH)	TREADS PER INCH	TORQUE (POUND-FEET)
1/4	20	7
5/16	18	14
3/8	16	25
7/16	14	40
1/2	13	60
9/16	12	88
5/8	11	120
3/4	10	200
7/8	9	302
1	8	466



2007-2013 Chevy/GMC 1500

I. PARTS LIST

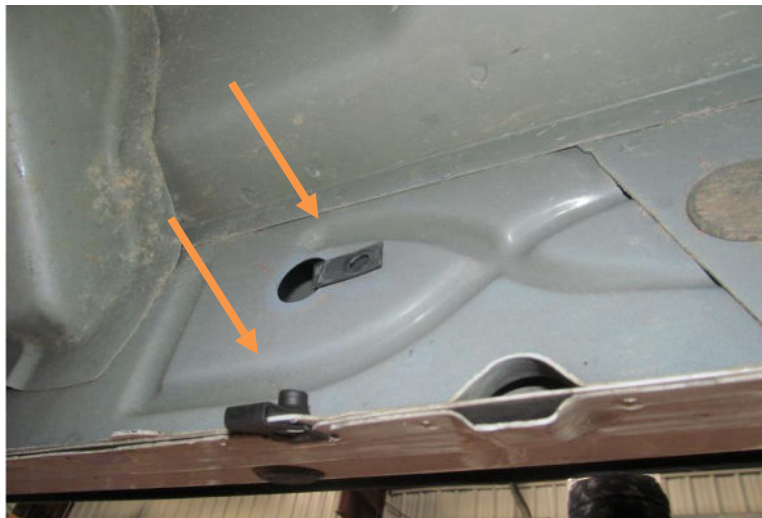
<u>QUANTITY</u>	<u>PART NUMBER</u>	<u>DESCRIPTION</u>
1	60P-56-0727	RIGHT SIDE RUNNING BOARDS
1	60P-56-0728	LEFT SIDE RUNNING BOARDS
1	60K-56-0150	HARDWARE PACKAGE #150

II. TOOL LIST

1. A good friend
2. Basic tool kit
3. ½" socket

III. VEHICLE PREPARATION

1. Install Spring Nuts from Hardware Kit #150 in existing cab holes for all 3 mounts. You may need to remove tape or plastic plugs covering the holes.

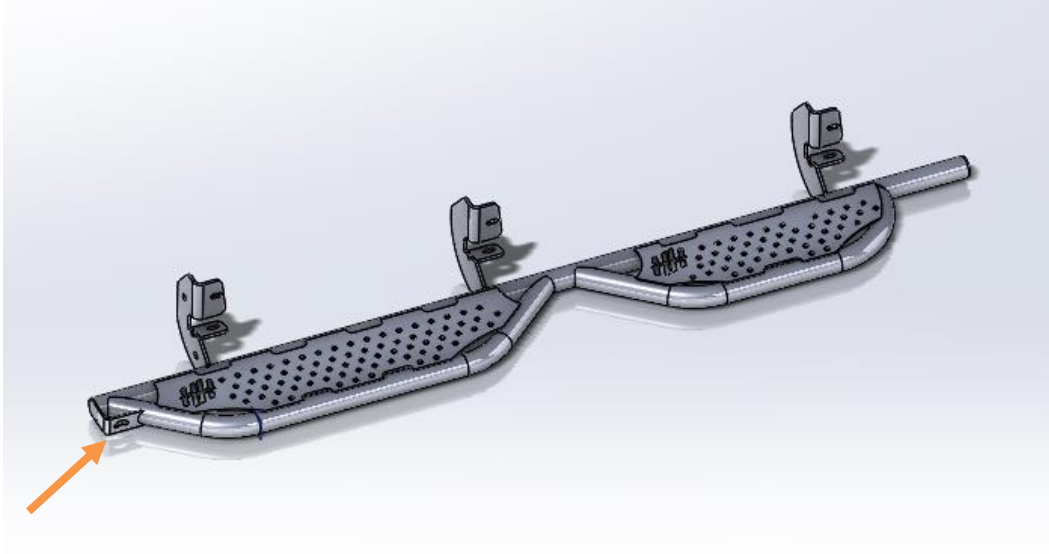




2007-2013 Chevy/GMC 1500

IV. RUNNING BOARD INSTALLATION

1. Identify the left running board. It will have a bottle opener (arrow) on the left side.



(Picture is for reference only; your running boards may differ.)

2. Have a friend help you hold the running board up to the mounting location.
3. Install one 5/16"-18x1" hex head bolt with a 5/16" lock washer and 5/16" flat washer in each hole of each mount. Hand-tighten the bolts.
4. Tighten all hardware with 1/2" socket. Installation is now complete. Follow the same procedure for the right side of the vehicle.

**Congratulations! Your installation is now complete.
Thank you for your purchase**