

1999-2004, Ford, F-250-550

FRONT BUMPER INSTALLATION INSTRUCTIONS



SAFETY

Know safety, no injury. Know injury, no safety. ~Author Unknown

If there are any questions, call 1-855-HHTOUGH

- **READ ALL SAFETY INSTRUCTIONS BEFORE INSTALLATION**
 - FOLLOW ALL INSTRUCTIONS FOR PROPER ASSEMBLY
 - WEAR APPROPRIATE EYE PROTECTION
 - EXERCISE CARE WHEN LIFTING COMPONENTS
 - USE APPROPRIATE TORQUE FOR BOLTS

SUGGESTED TORQUE VALUES FOR STEEL GRADE SAE 5 BOLTS

BOLT DIAMETER (INCH)	TREADS PER INCH	TORQUE (POUND-FEET)
1/4	20	7
5/16	18	14
3/8	16	25
7/16	14	40
1/2	13	60
9/16	12	88
5/8	11	120
3/4	10	200
7/8	9	302
1	8	466



1999-2004 Ford F-250-550 Front

I. PARTS LIST

<u>QUANTITY</u>	<u>PART NUMBER</u>	<u>DESCRIPTION</u>	<u>CHECKOFF</u>
1	600-56-0755	FRONT BUMPER	
1	60K-56-0057	HARDWARE KIT # 57	
2	60K-56-0062	HARDWARE KTI #62	
1	601-56-2958	RIGHT BAR MOUNT	
1	601-56-2959	LEFT BAR MOUNT	
2	601-56-0611	WELDNUT TAB 5	

II. TOOL LIST

1. Basic tool set
2. 3/4" wrench
3. 3/4" socket
4. 18mm socket
5. 13mm socket
6. 15mm socket
7. 7/16" socket
8. 7/16" wrench

III. REMOVAL OF OEM BUMPER

1. Remove all components from box and compare to parts list above
2. Unplug OEM fog lights.
3. Using 13mm socket, remove bolt attaching OEM bumper side bracket to frame. (both sides)



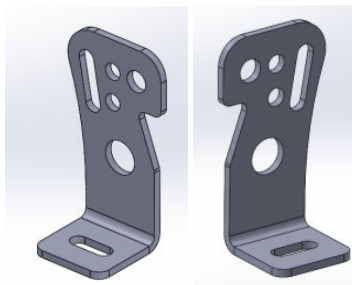
- Using 18mm socket, remove four OEM bumper bolts. Remove bumper and set aside.



- Using 15mm socket, remove six bolts attaching OEM tow hooks to frame and set hooks aside.

IV. INSTALLATION OF HAMMERHEAD BUMPER

- Install all lights in Hammerhead bumper at this time. Use included Bar mount brackets (601-56-2958 and 2959) and Hardware kit #57 to attach 20" bar in bumper to mount in bumper. Use hole in bracket and bumper that works best with your light bar. Tighten bolts from hardware kit #57 with 7/16" socket and wrench.

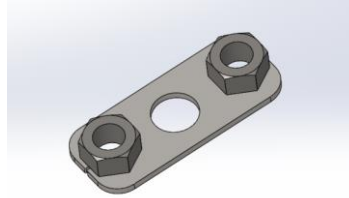


2958 and 2959 brackets



1999-2004 Ford F-250-550 Front

- Using hardware from kit #62, Install bumper on OEM bumper mount flanges. Each mount will use four $\frac{1}{2}$ "-13 x 2 bolts, four $\frac{1}{2}$ " flat washers, four $\frac{1}{2}$ " lock washers. Use "Weldnut tab 5" (601-56-0611) on the bumper side of the mounts and thread bolts in from the truck side.



Weldnut tab 5 (601-56-0611)

Align bumper a minimum of $\frac{1}{4}$ " below headlights. When truck flexes off-road, this distance allows your bumper and body to have clearance. Use a $\frac{3}{4}$ " wrench or socket to tighten all hardware.



Congratulations! Your bumper installation is now complete.
Thank you for your purchase.