

2009-2012 DODGE 1500 LOW PRO, NO BRUSH GUARD

FRONT BUMPER INSTALLATION INSTRUCTIONS



SAFETY

Know Safety, no injury. Know injury, no safety. ~Author Unknown
If there are any questions, call 1-855-HHTOUGH

- **READ ALL SAFETY INSTRUCTIONS BEFORE INSTALLATION**
 - FOLLOW ALL INSTRUCTIONS FOR PROPER ASSEMBLY
 - WEAR APPROPRIATE EYE PROTECTION
 - EXERCISE CARE WHEN LIFTING COMPONENTS
 - USE APPROPRIATE TORQUE FOR BOLTS
 - BLUE THREAD LOCKING COMPOUND IS RECOMMENDED ON ALL BOLTS

SUGGESTED TORQUE VALUES FOR STEEL GRADE SAE 5 BOLTS

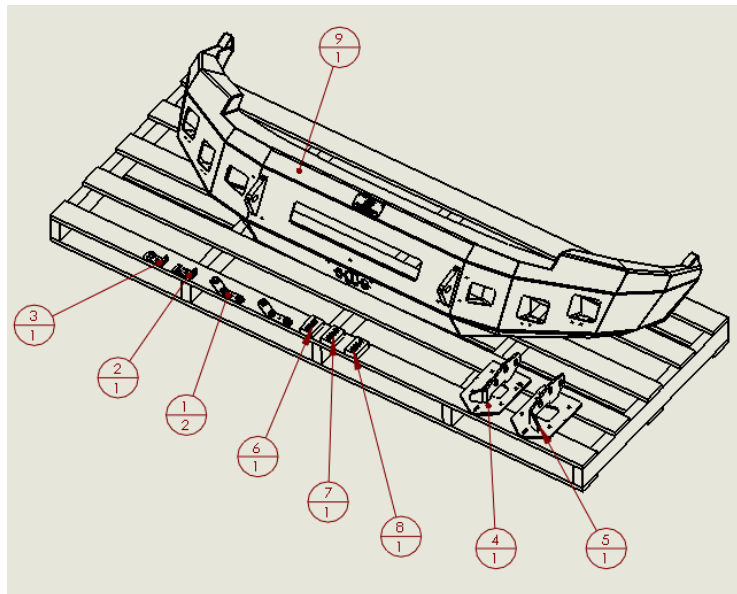
BOLT DIAMETER (INCH)	TREADS PER INCH	TORQUE (POUND-FEET)
1/4	20	7
5/16	18	14
3/8	16	25
7/16	14	40
1/2	13	60
9/16	12	88
5/8	11	120
3/4	10	200
7/8	9	302
1	8	466



600-56-0818

I. PARTS LIST

ITEM N.O.	QTY.	PART NUMBER	DESCRIPTION	
1	2	601-56-2868	WELD NUT TAB 3	-
2	1	601-56-2958	RIGHT BAR MOUNT	-
3	1	601-56-2959	LEFT BAR MOUNT	-
4	1	601-56-3100	RIGHT FRAME MOUNT WELDMENT	-
5	1	601-56-3101	LEFT FRAME MOUNT WELDMENT	-
6	1	60K-56-0057	HARDWARE KIT #57	-
7	1	60K-56-0063	HARDWARE KIT #63	-
8	1	60K-56-0064	HARDWARE KIT #64	-
9	1	60P-56-0818	600-56-0818 POLISHED	-



REMOVE CONTENTS FROM BOX AND VERIFY ALL PARTS ARE PRESENT.

If there are any questions, call 1-855 HHTOUGH or email HHORDERS@hammerheadarmor.com

II. TOOL LIST

1. A Good Friend
2. Basic Tool Kit
3. Blue Masking Tape
4. Trim Tool
5. 8mm socket
6. 10mm socket
7. 18mm socket and wrench
8. 7/16" socket and wrench
9. 9/16" socket and wrench
10. 3/4" socket and wrench

III. VEHICLE PREPARATION

1. Park vehicle on level surface.
2. Engage parking brake and disconnect battery.
3. Using blue masking tape, mask along the profile of your truck above the bumper. This will help protect your truck from any accidental scratches.

IV. REMOVAL OF OE BUMPER

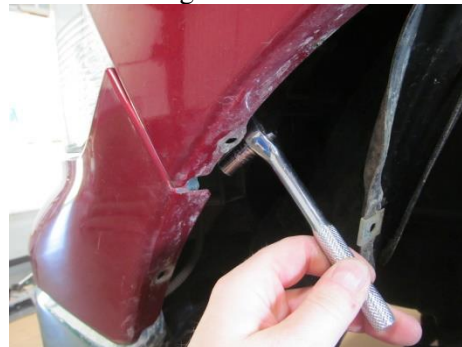
1. Using an 8mm socket, remove the bolt attaching the plastic fascia to the truck (both sides)



2. Using an 8mm socket, remove the bolt attaching the inner fender to the fender. This bolt will be re-used. (both sides)



3. Using 10mm socket, remove bolt attaching plastic fascia to fender. Push inner fender towards the frame and down to gain access to the bolt.



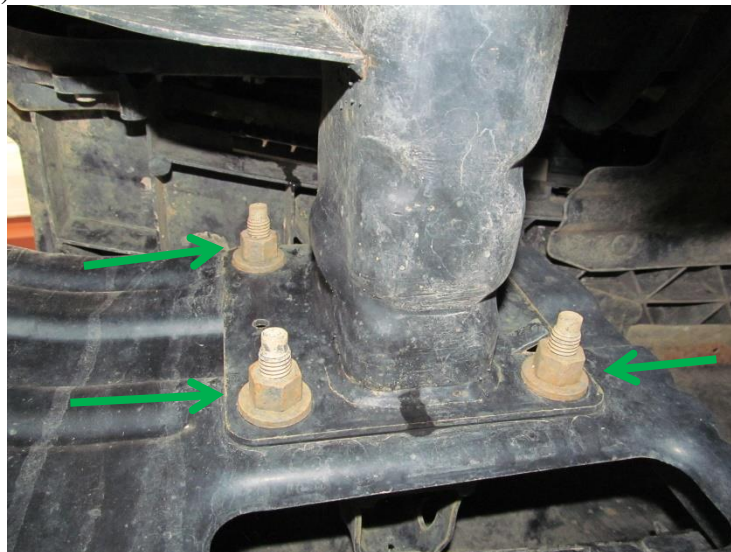
4. Starting at the fender, remove the plastic fascia by pulling down and outward. Set the plastic fascia aside, it will not be re-used.



5. Unplug fog lights (if applicable). The plug is located above the fog light in front of the left side tire.

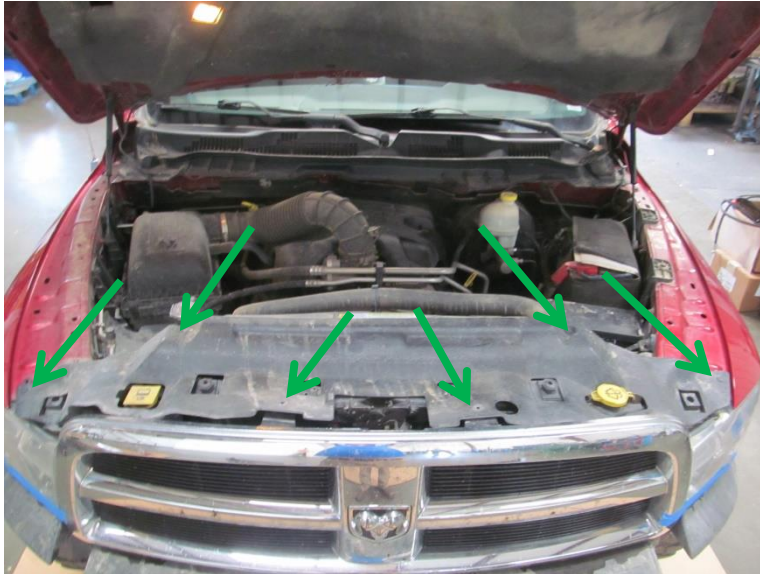


6. Using an 18mm socket, remove three nuts attaching the OE bumper to the frame. (both sides)

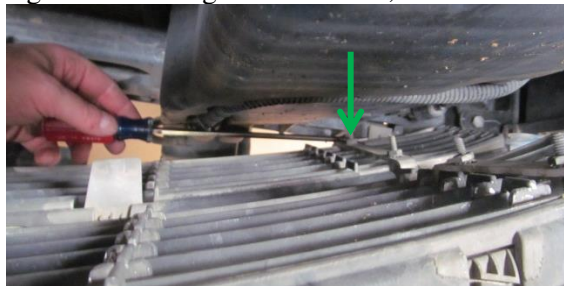


7. Remove OE bumper and set aside.

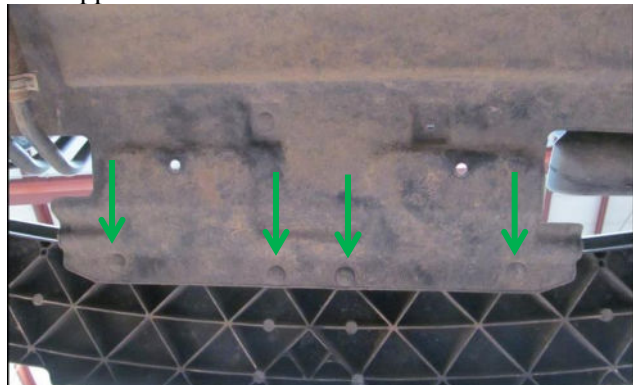
- Using a trim tool, remove six Christmas tree fasteners attaching radiator shroud to the grill. Set shroud aside, it will be re-used.



- Using a 10mm socket, remove four screws attaching the grill to the frame. They are located on top of the grill.
- Using a flat head screwdriver, pry up on the tabs attaching the bottom of the grill to the frame. Pull out on the bottom of the grill while prying up. Tabs are located at the bottom corners of the grill. Once the grill is removed, set it aside.



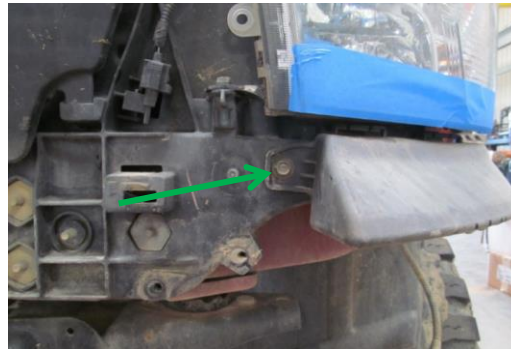
- Using trim tool, remove four Christmas tree fasteners attaching the bottom shroud to the plastic fascia support.



- Using 10mm socket, remove the four bolts attaching the center plastic fascia support to the frame. Remove the support and set it aside.



- Using 10mm socket, remove one bolt attaching side plastic fascia support to frame. Remove support and set aside. (both sides)



- Remove tow hooks (if applicable).

V. INSTALLATION OF HAMMERHEAD BUMPER

- Lay bumper face down on a carpeted surface or piece of cardboard. Install winch and all lights in bumper using brackets and hardware provided by light manufacturer.
- Reinstall the grill and radiator shrouds using the OE hardware
- Layout Hammerhead frame mounts and hardware kit #63 as shown.





600-56-0818

4. Install Hammerhead frame mounts on frame as shown. Do not fully tighten. Note: The formed legs on the bottom face outward.



5. Layout weldnut tabs and Hardware kit #64 as shown.



6. Using a hoist or a few friends, attach bumper to frame mounts using weldnut tabs and hardware kit #64. Start all bolts before aligning bumper. Leave a minimum of 3/8" space between bumper and truck body. When the truck flexes off-road, this distance allows your bumper and truck body to have clearance. Make sure to have a minimum of 1/4" of clearance around the triangle piece behind the headlights. Failure to do so will damage the headlight or the fender. Tighten bolts with 3/4" socket and wrench. Tighten frame mount bolts at this time. Use suggested torque values from page 1.



**Congratulations! Your Installation is now complete.
Thank You for your purchase!**