



600-56-0886

2018-20XX JEEP JL 2 DOOR X-SERIES RUNNING BOARDS

RUNNING BOARD INSTALLATION INSTRUCTIONS



SAFETY

Know Safety, no injury. Know injury, no safety. ~Author Unknown
If there are any questions, call 1-855-HHTOUGH

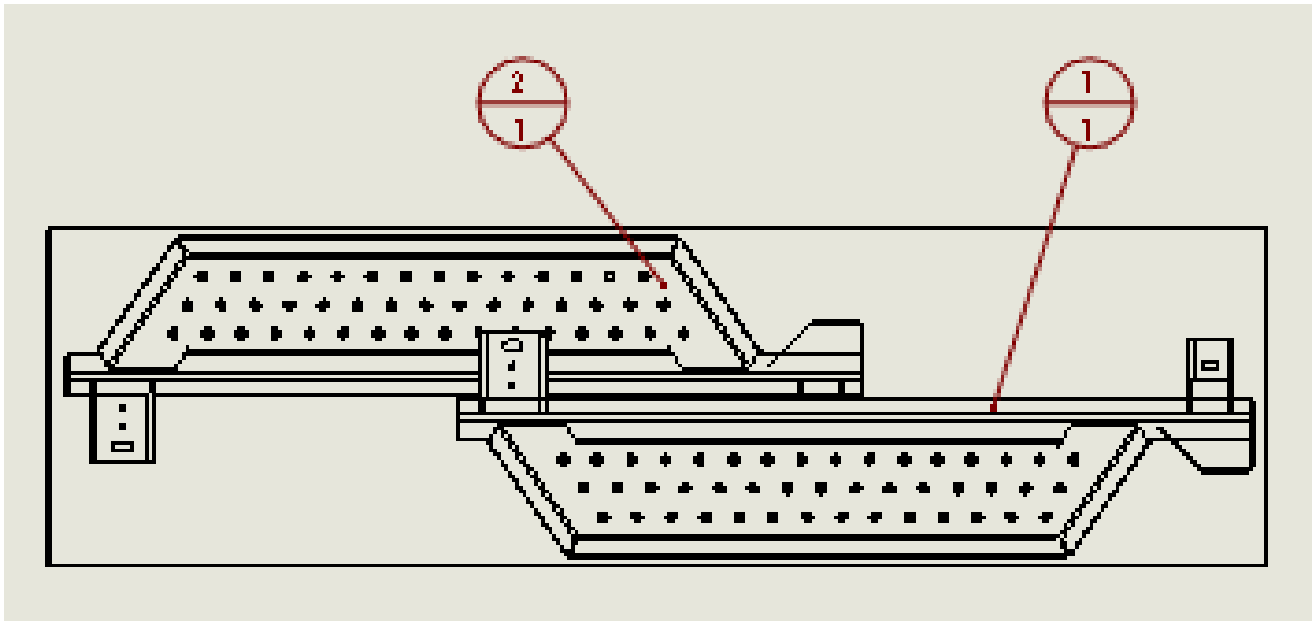
- **READ ALL SAFETY INSTRUCTIONS BEFORE INSTALLATION**
 - FOLLOW ALL INSTRUCTIONS FOR PROPER ASSEMBLY
 - WEAR APPROPRIATE EYE PROTECTION
 - EXERCISE CARE WHEN LIFTING COMPONENTS
 - USE APPROPRIATE TORQUE FOR BOLTS
 - BLUE THREAD LOCKING COMPOUND IS RECOMMENDED ON ALL BOLTS

SUGGESTED TORQUE VALUES FOR STEEL GRADE SAE 5 BOLTS

BOLT DIAMETER (INCH)	TREADS PER INCH	TORQUE (POUND-FEET)
1/4	20	7
5/16	18	14
3/8	16	25
7/16	14	40
1/2	13	60
9/16	12	88
5/8	11	120
3/4	10	200
7/8	9	302
1	8	466

I. PARTS LIST

ITEM NO.	QTY	PART NUMBER	DESCRIPTION
1	1	60P-56-0886	RIGHT STEP
2	1	60P-56-0887	LEFT STEP



REMOVE CONTENTS FROM BOX AND VERIFY ALL PARTS ARE PRESENT.

If there are any questions, call 1-855 HHTOUGH or email HHORDERS@hammerheadarmor.com

II. TOOL LIST

1. A Good Friend
2. Basic Tool Kit
3. Breaker Bar
4. 18mm socket
5. Torque wrench

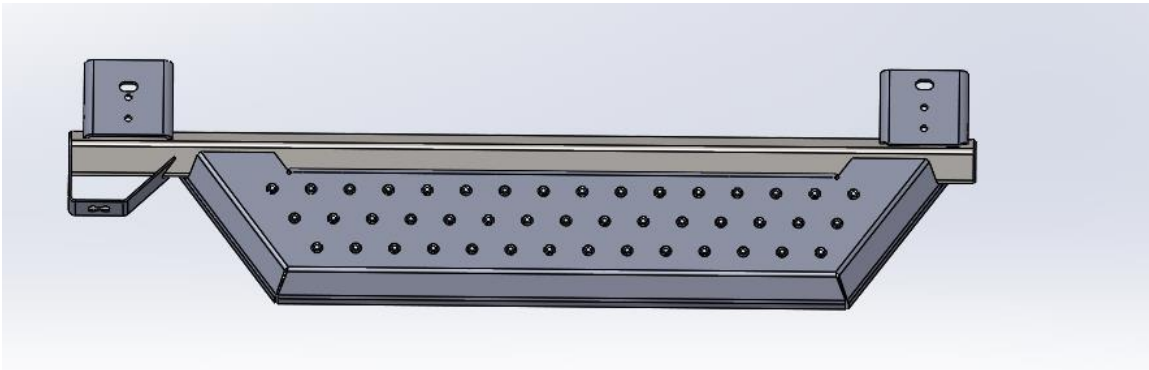
III. VEHICLE PREPARATION

1. Park vehicle on level surface and engage parking brake.
2. Remove any existing running boards from your vehicle.
3. Using the breaker bar and the 18mm socket, remove the two body mount bolts from each side of the Jeep. (See Below) The front bolt on each side will be difficult to remove. Use the breaker bar for the entirety of the removal. If you cannot get the bolt out of the body mount completely, apply downward force while unthreading the bolt to remove it.



IV. RUNNING BOARD INSTALLATION

1. Layout the running boards under the Jeep. The bottle opener goes toward the front.



2. Install Hammerhead Armor X-Series Running Boards on both sides of the Jeep with the previously removed body mount bolts.
3. Torque all bolts to the torque specified in the Jeeps manual. (80 ft/lbs)



600-56-0886



**Congratulations! Your Installation is now complete.
Thank You for your purchase!**