

## 2019 DODGE 2500-3500 FLUSH MOUNT REAR

### REAR BUMPER INSTALLATION INSTRUCTIONS



## SAFETY

**Know Safety, no injury. Know injury, no safety. ~Author Unknown**  
If there are any questions, call 1-855-HHTOUGH

- **READ ALL SAFETY INSTRUCTIONS BEFORE INSTALLATION**
  - FOLLOW ALL INSTRUCTIONS FOR PROPER ASSEMBLY
  - WEAR APPROPRIATE EYE PROTECTION
  - EXERCISE CARE WHEN LIFTING COMPONENTS
  - USE APPROPRIATE TORQUE FOR BOLTS
  - BLUE THREAD LOCKING COMPOUND IS RECOMMENDED ON ALL BOLTS





600-56-0959

**Suggested Torque Values For Steel Grade 5 Standard Bolts**

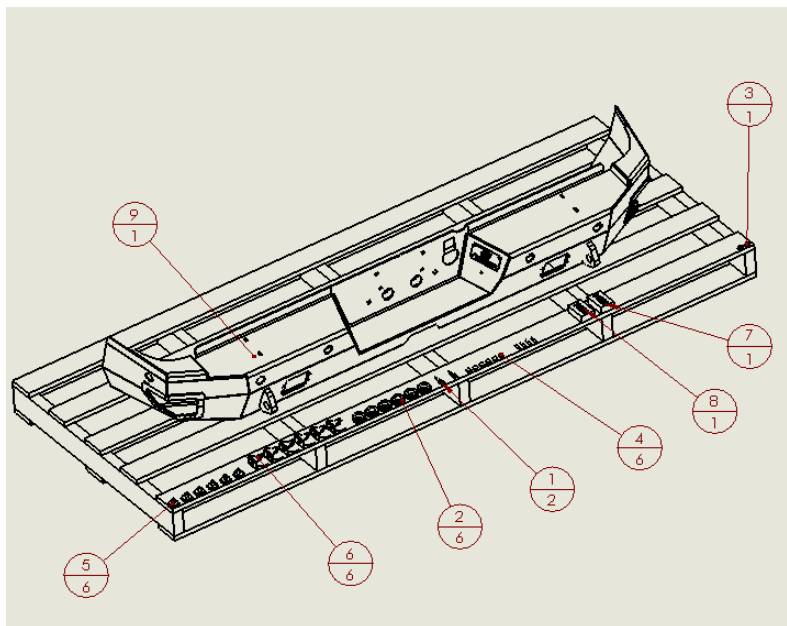
BOLT DIAMETER (INCH)	THREADS PER INCH	TORQUE (POUND - FEET)
1/4	20	7
5/16	18	14
3/8	16	25
7/16	14	40
1/2	13	60
9/16	12	88
5/8	11	120
3/4	10	200
7/8	9	302
1	8	466

**Suggested Torque Values For Steel Grade 8.8 Metric Bolts**

BOLT DIAMETER (mm)	THREAD PITCH (mm)	TORQUE (POUND-FEET)
6	1.0	7
8	1.25	16
10	1.5	32
12	1.75	55
14	2.0	88
16	2.0	140
18	2.5	195
20	2.5	275
22	2.5	375
24	3.0	475

**I. PARTS LIST**

ITEM NO.	QTY	PART NUMBER	DESCRIPTION	
1	2	307-07-0008	12V COOL WHITE LED 120DEG BLK	-
2	6	307-13-0231	PARK ASSIST SENSOR GROMMET	-
3	1	443-01-0086	LICENSE PLATE MOUNTING KIT	-
4	6	443-10-0927	PUSH IN BUMPER 5/16" HOLE SIZE	-
5	6	601-56-2316	OUTSIDE PLUG	-
6	6	601-56-2711	SENSOR CLIP	-
7	1	60K-56-0004	HARDWARE KIT #4	-
8	1	60K-56-0206	HARDWARE KIT #206	-
9	1	60P-56-0959	600-56-0959 POLISHED	-
10	4	307-09-0135	BUTT SPLICE 22/16 RED, HEATSINK	-



**REMOVE CONTENTS FROM BOX AND VERIFY ALL PARTS ARE PRESENT.**

**If there are any questions, call 1-855 HHTOUGH or email [HHORDERS@hammerheadarmor.com](mailto:HHORDERS@hammerheadarmor.com)**

**II. TOOL LIST**

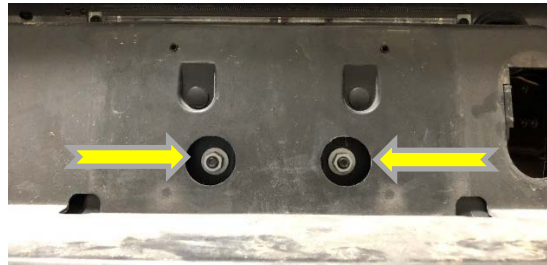
1. A Good Friend
2. Basic Tool Kit
3. Blue Masking Tape
4. Trim Tool
5. 10mm socket
6. 15mm Socket
7. 13mm socket
8. 16mm socket
9. Heat gun
10. Wire pliers
11. 3/4" socket and wrench

### III. VEHICLE PREPARATION

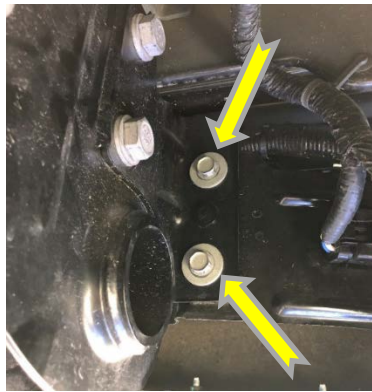
1. Park vehicle on level surface.
2. Engage parking brake and disconnect battery.
3. Using blue masking tape, mask along the profile of your truck above the bumper. This will help protect your truck from any accidental scratches.

### IV. REMOVAL OF OE BUMPER

1. Disconnect trailer plug, sensors, and license plate lights (if applicable). Plugs are located on the left side of the truck.
2. Using 10mm socket, remove the license plate from the truck to access the bolts behind it.
3. Using a 15mm socket, remove the 2 nuts from behind the license plate



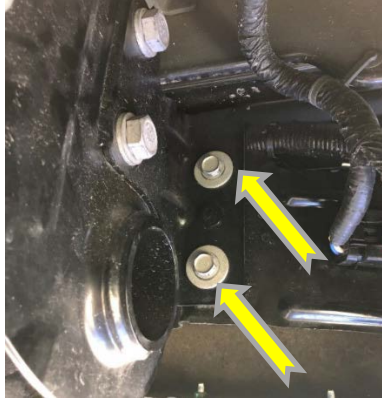
4. A. For trucks without OE drop step- Using a 15mm socket, remove the 2 bolts attaching the bumper to the frame. (Both Sides)



4. B. For trucks with OE drop step left side of truck – Using 13mm socket, remove small step brace (arrow). Using 16mm socket, remove bolts attaching OE bumper and step to frame.

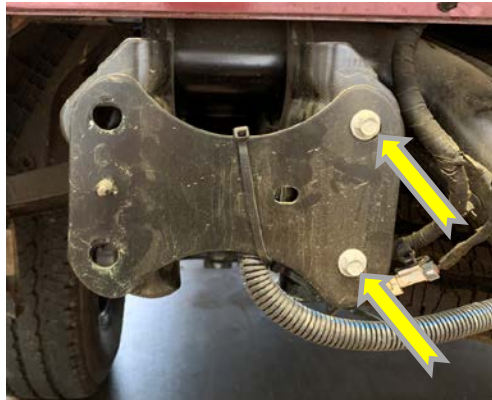


4. C. For trucks with OE drop step right side of truck - Using 15mm socket, remove the 2 bolts attaching the bumper to the frame. (Both Sides)



5. Remove OE bumper and set aside.

6. Using 10mm socket, remove two bolts attaching small metal plates to receiver hitch. (both sides) Metal plates will not be reused.

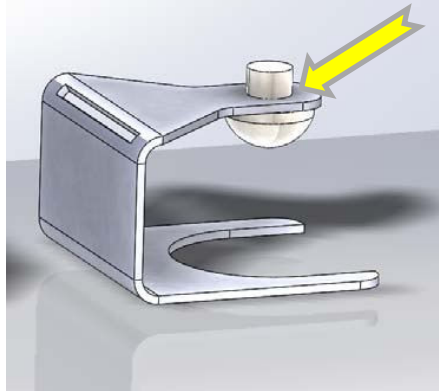


## V. **INSTALLATION OF HAMMERHEAD BUMPER**

1. Place bumper on a carpeted surface or piece of cardboard. Install all OE and optional accessories at this time. On the trailer plug, you will need to use a flathead screwdriver to pry out on the stainless steel tabs to engage them properly on the Hammerhead bumper.
2. For bumpers with sensors, install rubber grommets in bumper. Place a drop of dish washing soap on each sensor to lubricate it. Install OE sensors in bumper. The sensor's plugs need to be oriented the same way they are in the OE bumper.

**NOTE: DO NOT TWIST SENSOR WHILE INSTALLING. THIS WILL DAMAGE IT.**

3. Install rubber bumper (arrow) in sensor clip. Some trucks have four sensors and some have six. For trucks with four sensors, leave sensor plugs in side holes.

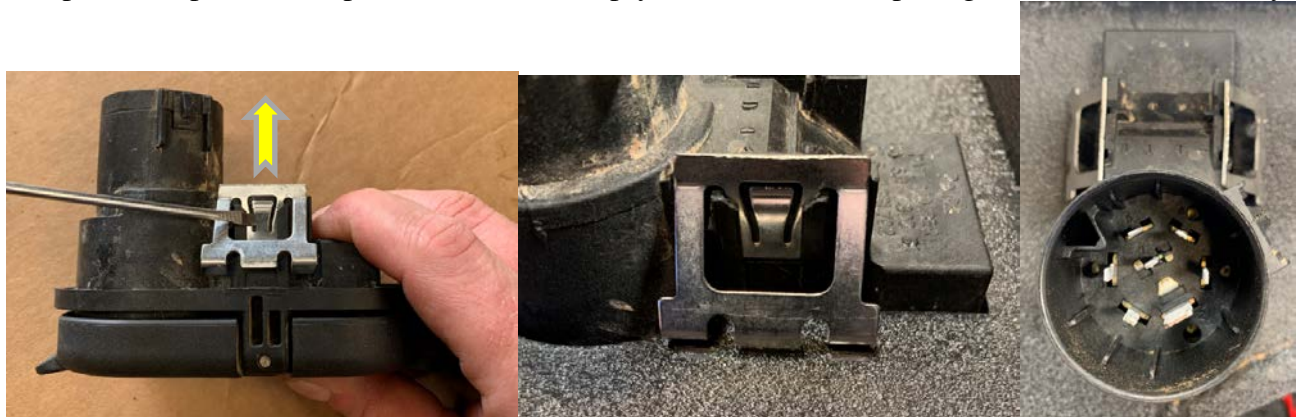


4. Slide sensor clip over grommet and ensure rubber bumper touches the back of the sensor. This clip will retain the sensor in the grommet.



5. Install OE wiring harnesses and plug sensors in.

6. In this step, you will install the trailer plug connector. Use a small flathead screwdriver to remove the small stainless clips on the plastic housing. Gently pry up on the middle of the clip and slide the clip away from the housing. (in the direction of the arrow) (both sides) Place the plastic housing in the bumper and replace the clips. You will need to pry outward on the clips to get them to seat correctly.



7. Cut off OE license plate light plugs and use provided butt connectors to install LED license plate lights. Use heat gun to shrink wrap bullet connector after crimped. NOTE: Install LED license plate lights in bumper before splicing in with butt connectors.





600-56-0959

8. Using a hoist or a few friends, attach bumper to frame using hardware kit #4 and small OE bolts that attached metal plate removed in step 6. Start all bolts before aligning bumper. Open the tailgate slowly to ensure a minimum of 3/8" clearance below tailgate and truck body. Tighten bolts with 3/4" socket and wrench and 10mm socket. Torque to values on page 2.



**Congratulations! Your Installation is now complete.  
Thank You for your purchase!**