

# 2016-2018 CHEVY 1500

## FRONT BUMPER INSTALLATION INSTRUCTIONS



# SAFETY

**Know safety, no injury. Know injury, no safety. ~Author Unknown**

If there are any questions, call 1-855-HHTOUGH

- **READ ALL SAFETY INSTRUCTIONS BEFORE INSTALLATION**

- FOLLOW ALL INSTRUCTIONS FOR PROPER ASSEMBLY
- WEAR APPROPRIATE EYE PROTECTION
- EXERCISE CARE WHEN LIFTING COMPONENTS
- USE APPROPRIATE TORQUE FOR BOLTS
- BLUE THREAD LOCKING COMPOUND IS RECOMMENDED ON ALL BOLTS

- SUGGESTED TORQUE VALUES FOR STEEL GRADE SAE 5 BOLTS

BOLT DIAMETER (INCH)	TREADS PER INCH	TORQUE (POUND-FEET)
1/4	20	7
5/16	18	14
3/8	16	25
7/16	14	40
1/2	13	60
9/16	12	88
5/8	11	120
3/4	10	200
7/8	9	302
1	8	466



## 2016-2018 CHEVY1500 FRONT

### I. PARTS LIST

<u>QUANTITY</u>	<u>PART NUMBER</u>	<u>DESCRIPTION</u>
1	600-56-0434, 0501	FRONT BUMPER
1	601-56-2935	PASS FRAME MOUNT
1	601-56-2936	DRIVER FRAME MOUNT
2	601-56-2868	WELDNUT TAB 3
1	60K-56-0057	HARDWARE KIT #57
1	60K-56-0058	HARDWARE KIT #58
4	316-01-0005	SENSOR PLUGS
1	601-56-2958	RIGHT BAR MOUNT
1	601-56-2959	LEFT BAR MOUNT

### II. TOOL LIST

1. 10mm socket
2. 13mm socket
3. 15mm wrench
4. 18mm socket
5. 18mm wrench
6. 12" extension
7. Flathead screwdriver
8. 7/16" wrench and socket

### III. REMOVAL OF OEM BUMPER

1. Open hood and remove 12 plastic clips. Remove plastic shroud and gently set aside, it will be reused.





## 2016-2018 CHEVY1500 FRONT

2. Remove four screws on top of grill with 10mm socket.



3. Remove the grill. Do this by pulling out on the bottom on both sides to disengage tabs and then rotating the grill upwards. Gently set grill aside; it will be reused.





## 2016-2018 CHEVY1500 FRONT

4. Unplug the OEM fog light and sensor wiring harness and place it on top of the factory skid plate out of the way.



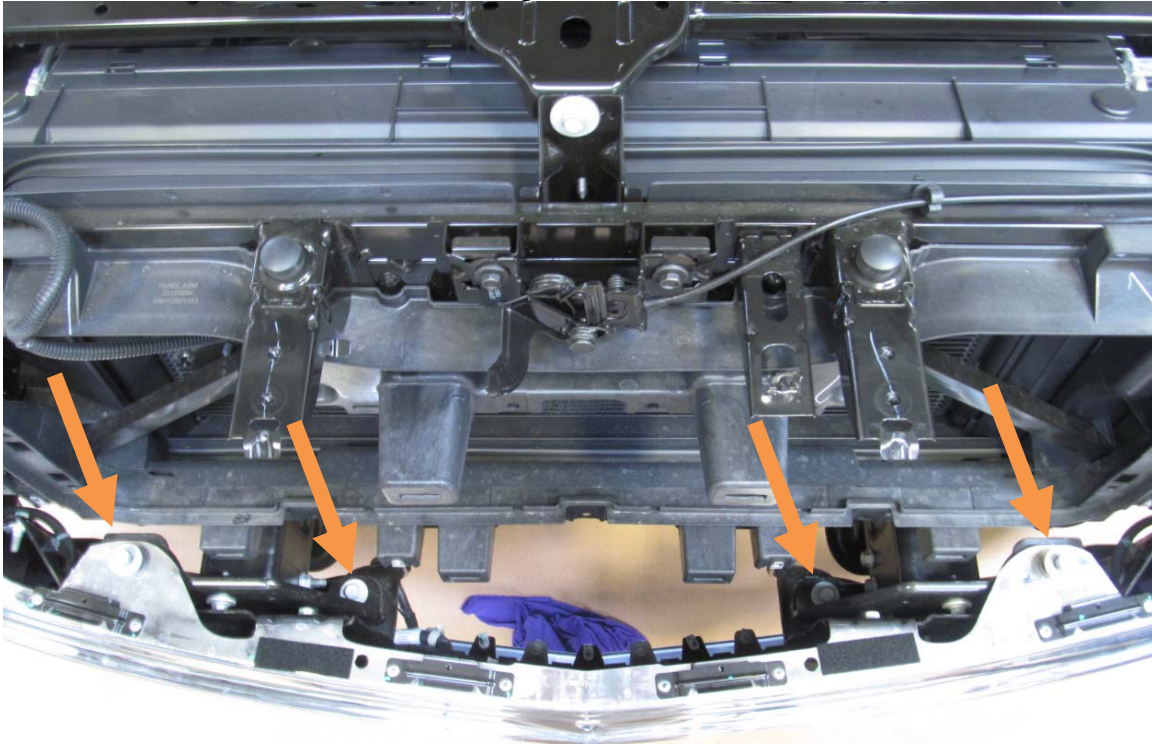
5. Remove three bolts from OE side bumper support (in front of tires) with 15mm socket. (both sides)





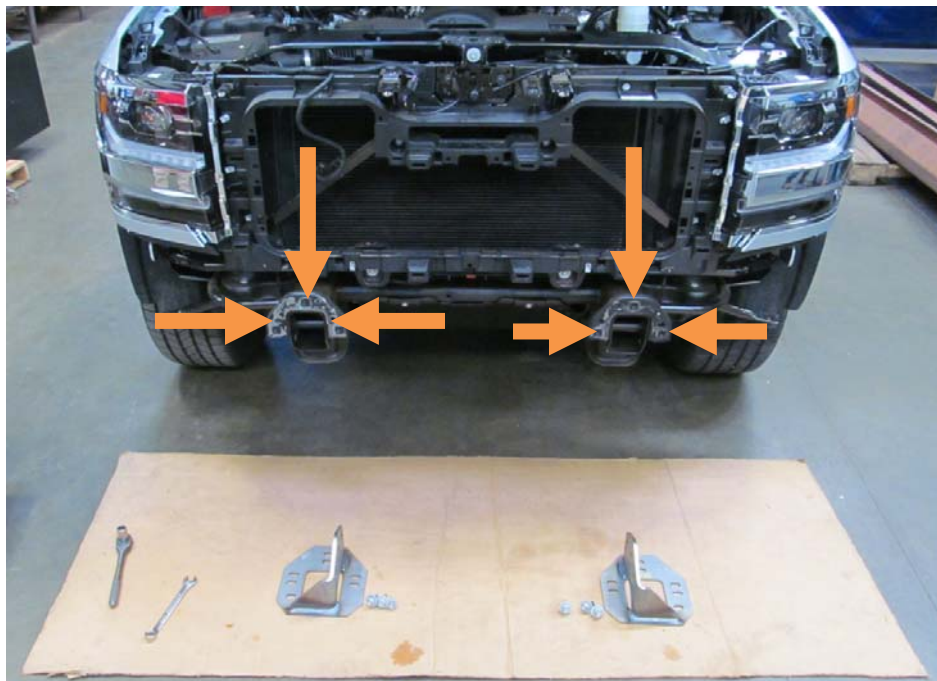
## 2016-2018 CHEVY1500 FRONT

6. Remove four OE bumper bolts with 18mm socket.



7. Remove OE bumper and set aside.

8. Remove six bolts attaching on OE frame flanges to frame with 15mm socket. Set brackets aside.





## 2016-2018 CHEVY1500 FRONT

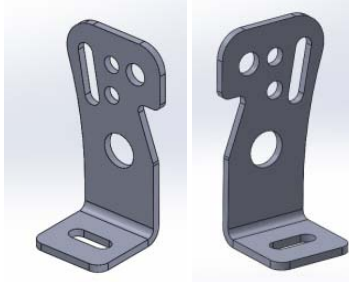
9. Remove two bolts attaching OE tow hooks with 18mm socket and wrench. (both sides) Set tow hooks aside.



10. Remove OEM sensors, grommets, and wiring harness from OEM bumper.

### **IV. INSTALLATION OF HAMMERHEAD BUMPER**

1. Install sensors grommets and wiring harness in Hammerhead bumper.
  2. Install all lights Hammerhead bumper.
- Use included Bar mount brackets (601-56-2958 and 2959) and Hardware kit #57 to attach 20" bar in bumper to mount in bumper. Use hole in bracket and bumper that works best with your light bar. Tighten bolts from hardware kit #57 with 7/16" socket and wrench.



2958-2959 brackets







## 2016-2018 CHEVY1500 FRONT

3. Replace OEM grill.
4. Replace four bolts on top of grill with 10 mm socket.
5. Replace plastic shroud.
6. Install Hammerhead frame mounts (601-56-2935 and 2936) with OEM hardware and loosely tighten. **USE TOP SLOTS FOR BOLTS.**

The bumper's left to right adjustment will be done with these mounts.



7. Install OEM sensor grommets, sensors, and wiring in Hammerhead bumper.
8. If your vehicle is not equipped with sensors, install sensor plugs (316-01-0005) at this time.
9. Install and align Hammerhead bumper using Hardware Kit #58 and 601-56-2868 Weldnut Tabs. Adjust bumper left to right and tighten OE hardware on frame and lower mount bolt. Adjust bumper up and down and in and out then completely tighten all frame mount to bumper hardware.



Congratulations! Your installation is now complete.  
Thank you for your purchase.