

JEEP JK 2007-2018 STC RETROFIT KIT INSTALLATION INSTRUCTIONS

THIS KIT SHOULD ONLY BE INSTALLED BY A PROFESSIONAL.



SAFETY

Know Safety, no injury. Know injury, no safety. ~Author Unknown
If there are any questions, call 1-855-HHTOUGH

- **READ ALL SAFETY INSTRUCTIONS BEFORE INSTALLATION**
 - FOLLOW ALL INSTRUCTIONS FOR PROPER ASSEMBLY
 - WEAR APPROPRIATE EYE PROTECTION
 - EXERCISE CARE WHEN LIFTING COMPONENTS
 - USE APPROPRIATE TORQUE FOR BOLTS
 - BLUE THREAD LOCKING COMPOUND IS RECOMMENDED ON ALL BOLTS





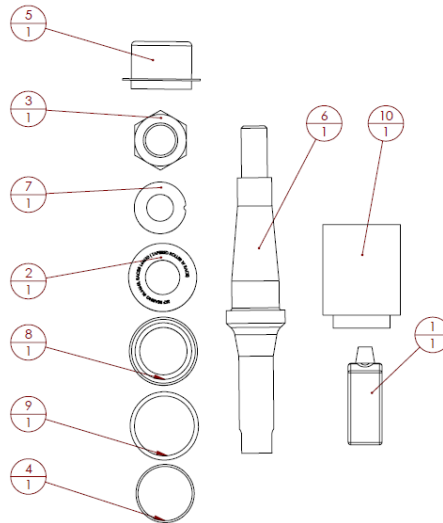
600-56-0967

Suggested Torque Values For Steel Grade 5 Standard Bolts		
BOLT DIAMETER (INCH)	THREADS PER INCH	TORQUE (POUND - FEET)
1/4	20	7
5/16	18	14
3/8	16	25
7/16	14	40
1/2	13	60
9/16	12	88
5/8	11	120
3/4	10	200
7/8	9	302
1	8	466

Suggested Torque Values For Steel Grade 8.8 Metric Bolts		
BOLT DIAMETER (mm)	THREAD PITCH (mm)	TORQUE (POUND- FEET)
6	1.0	7
8	1.25	16
10	1.5	32
12	1.75	55
14	2.0	88
16	2.0	140
18	2.5	195
20	2.5	275
22	2.5	375
24	3.0	475

I. PARTS LIST

ITEM NO.	QTY.	PART NUMBER	DESCRIPTION
1	1	235-02-0038	MULTIPLEX RED #2 GREASE PACKET
2	1	301-01-0093	SKF BEARING L44643
3	1	314-03-0059	00.750 16 NUT HL 05 NL ZN
4	1	351-01-0382	O-RING
5	1	359-02-0087	2" STEEL DUST CAP
6	1	601-56-2077	PIVOT
7	1	601-56-2315	THRUST WASHER
8	1	601-56-5434	BRASS BUSHING
9	1	601-56-5435	ALUMINUM O-RING INSERT
10	1	601-56-5436	AL PRESS IN TOOL



REMOVE CONTENTS FROM BOX AND VERIFY ALL PARTS ARE PRESENT.

If there are any questions, call 1-855 HHTOUGH or email HHORDERS@hammerheadarmor.com

II. TOOL LIST

1. Hammer
2. PB Blaster or some type of penetrating lubricant
3. 9/16" socket
4. 9/16" wrench
5. 3/4" wrench
6. 27mm socket
7. Crescent wrench
8. Wire brush
9. Pipe wrench
10. Flathead screwdriver

III. REMOVAL OF STC

1. Remove one bolt from the dog bone releasing the STC from the tailgate. Use a 9/16" wrench and a 9/16" socket.



2. Remove the bolt holding the STC shaft into the rear bumper. Use a 3/4" wrench.



3. If the old STC shaft is stuck in the bumper it will need to be removed from the bumper. Spray the shaft with penetrating lubricant and allow to sit for a day. Using a hammer hit the side of the shaft. This should break the shaft loose.
4. Remove the cap with a flat head screwdriver by carefully prying up the lip all the way around the cap.



- Using a 27mm socket and a crescent wrench remove the nut from the STC shaft.



- If your shaft has been broken you will need to use a pipe wrench on the bottom portion of the shaft instead of the crescent wrench.
- Remove the roller bearing and the washer from the top of the shaft, slide the shaft out the bottom of the STC.
- Using a hammer and a screwdriver (push rod shown but a screwdriver will work too) push out the bottom roller bearing and seal.



- Clean out the inside of the STC housing as best you can with a wire brush. This will make the next steps much easier.
- Place the brass bushing into the bottom of the STC housing with the tapered end facing down as shown.



11. Take your new shaft and install the old 1/2" bolt, slide the shaft into the brass bushing and using a hammer hit the bolt until the bushing is fully seated into the housing as shown below



12. Press in the Aluminum O-ring insert next. You will use the Aluminum press in tool provided and a hammer to help you press it in.



13. Install the provided O-ring.

14. Using the provided grease pack apply grease to the brass bushing and to the O-Ring as shown below.



15. Flip the STC right side up. Apply grease to the shaft and slide into housing as shown below.



16. Place new roller bearing in the top as shown below. Make sure taper is pointing down.



17. Place the provided new washer on top of the roller bearing as shown below.



18. Tighten provided new nut onto the top of the shaft. Once it is tight loosen it 1/16 of a turn at a time till the shaft can spin with your hand.



19. Install new cap into the top of the STC housing with the Aluminum press in tool. As shown below.



20. Slide STC shaft back into the housing in the bumper. Bolt to bumper using the old 1/2" bolt, washer, and lock washer. You will use a 3/4" wrench.
21. Reattach the dogbone to the O-plate using the 9/16" wrench and the 9/16" socket. You will use the same hardware you removed in step 1.

**Congratulations! Your Installation is now complete.
Thank You for your purchase!**